

CPCD 50/60/70/80/90/100 5-10T DIESEL FORKLIFT

MAXBULL



5-10 t

K2 series Internal Combustion
Counterbalanced Forklift Truck



ANHUI MAXBULL MACHINERY TECHNOLOGY CO., LTD.

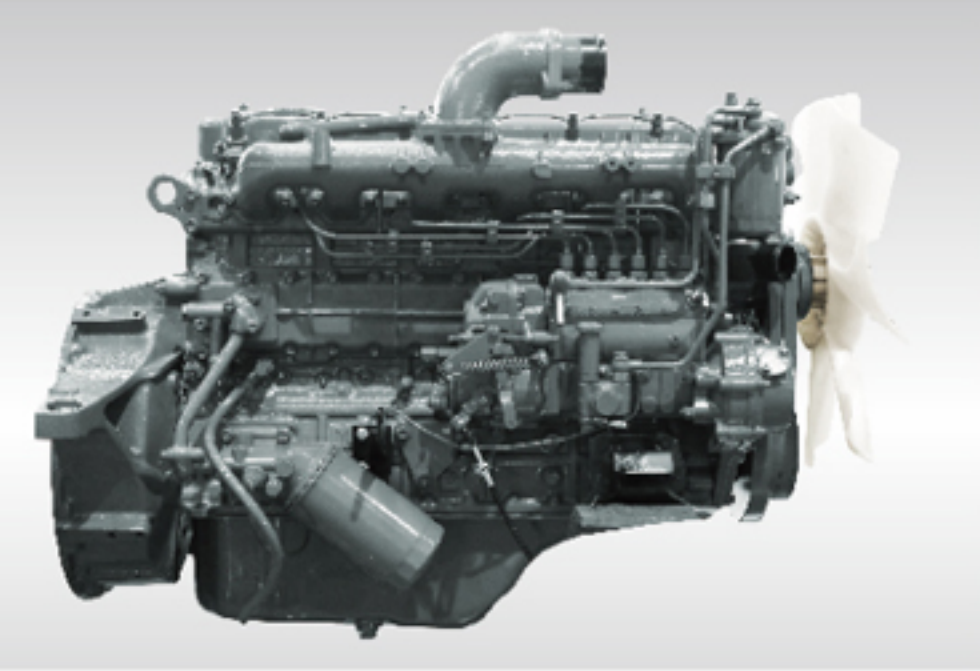
ADD: NO.2628 Hubei Road, Baohe Dist, Hefei, Anhui, China

TEL: 0086 551 63852627

Email: info@maxbull.cn

WEB: www.ahmaxbull.com

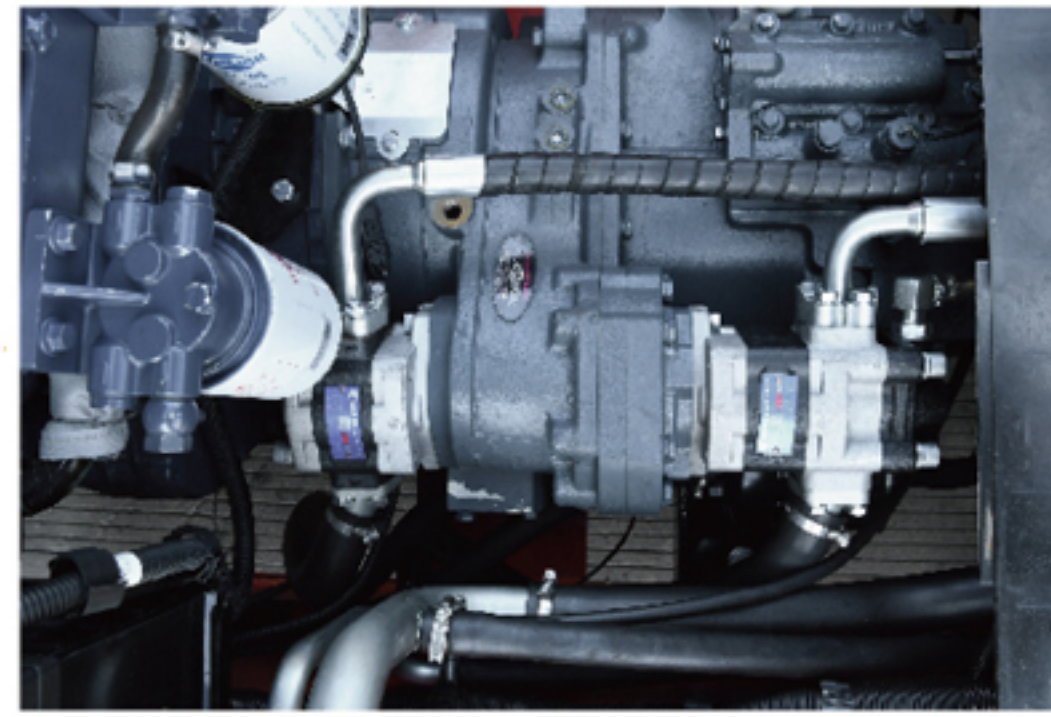
SAFE AND RELIABLE



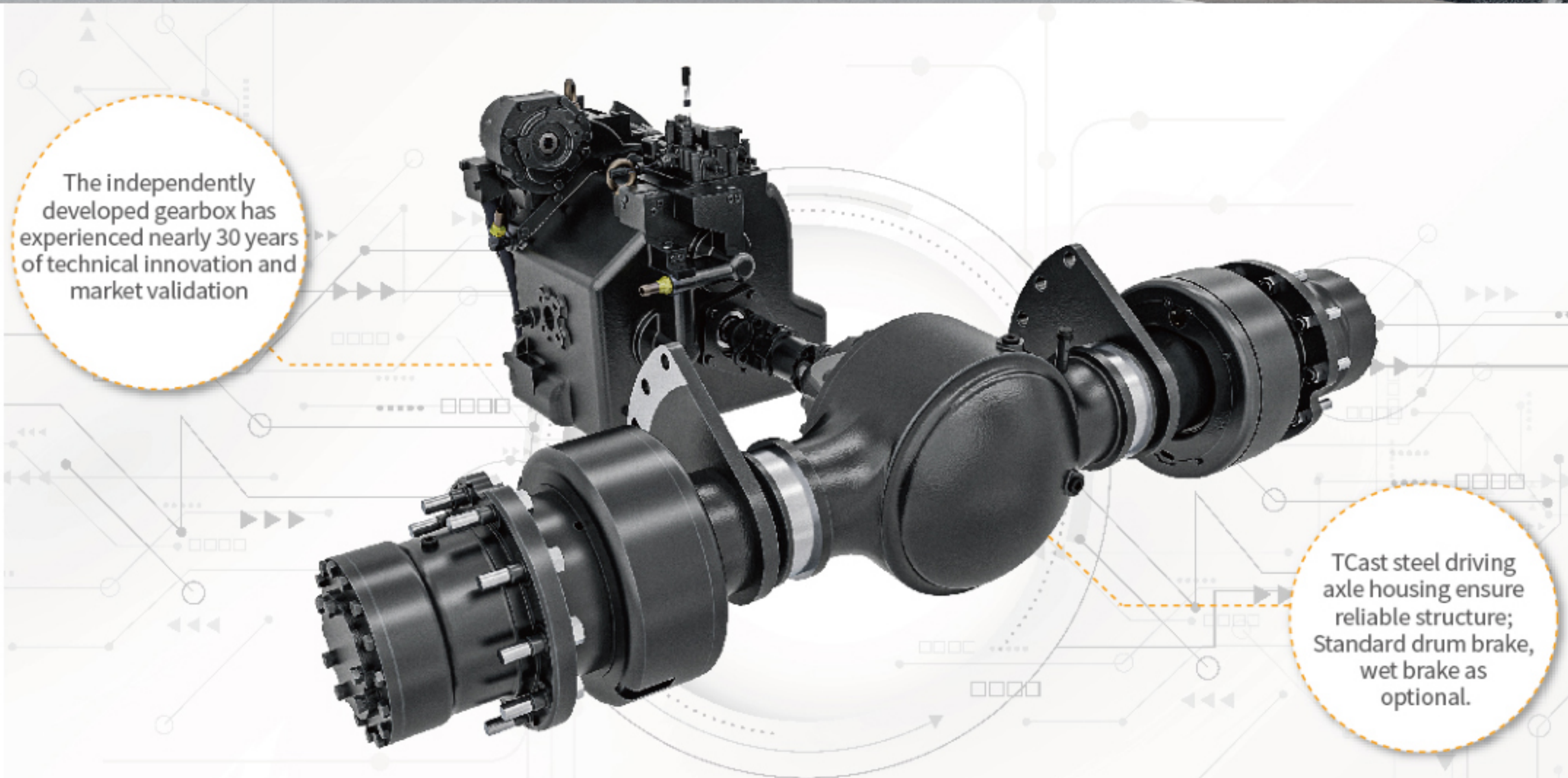
Classic engine, energy saving and reliable



Standard LED lamps, energy saving, more brighter, long service life



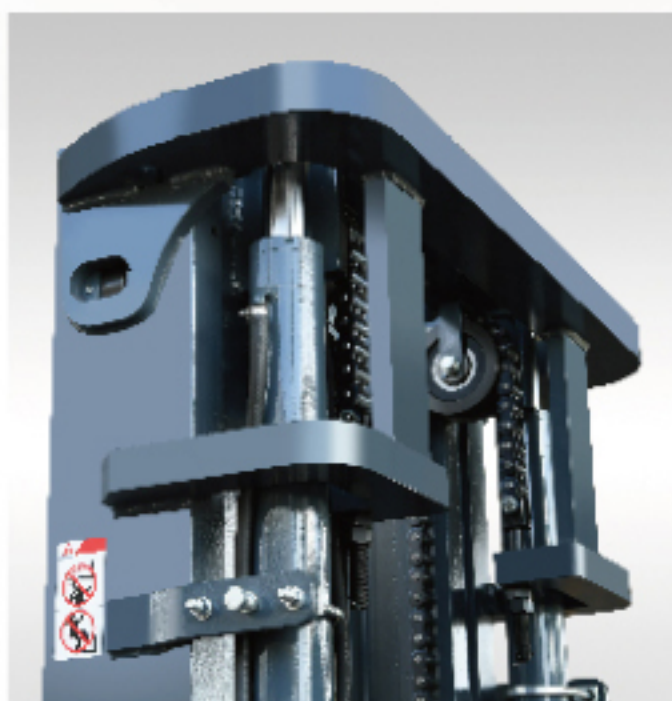
Load sensing steering and dual pump confluence technology, energy consumption reduce by 10%



Rain test



Impact test of overhead guard



Frame type upper beam, more reasonable structure, enhance the rigidity and strength



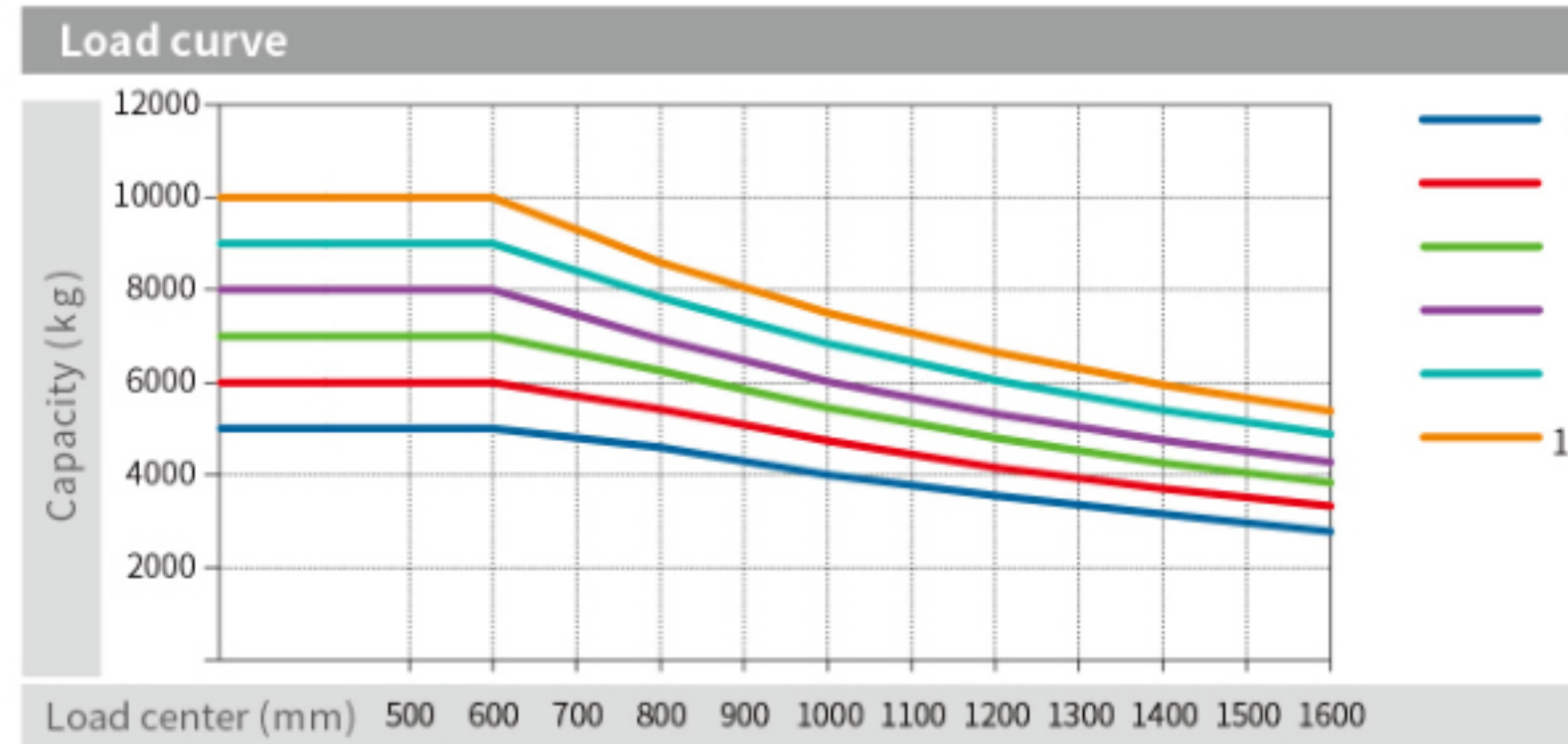
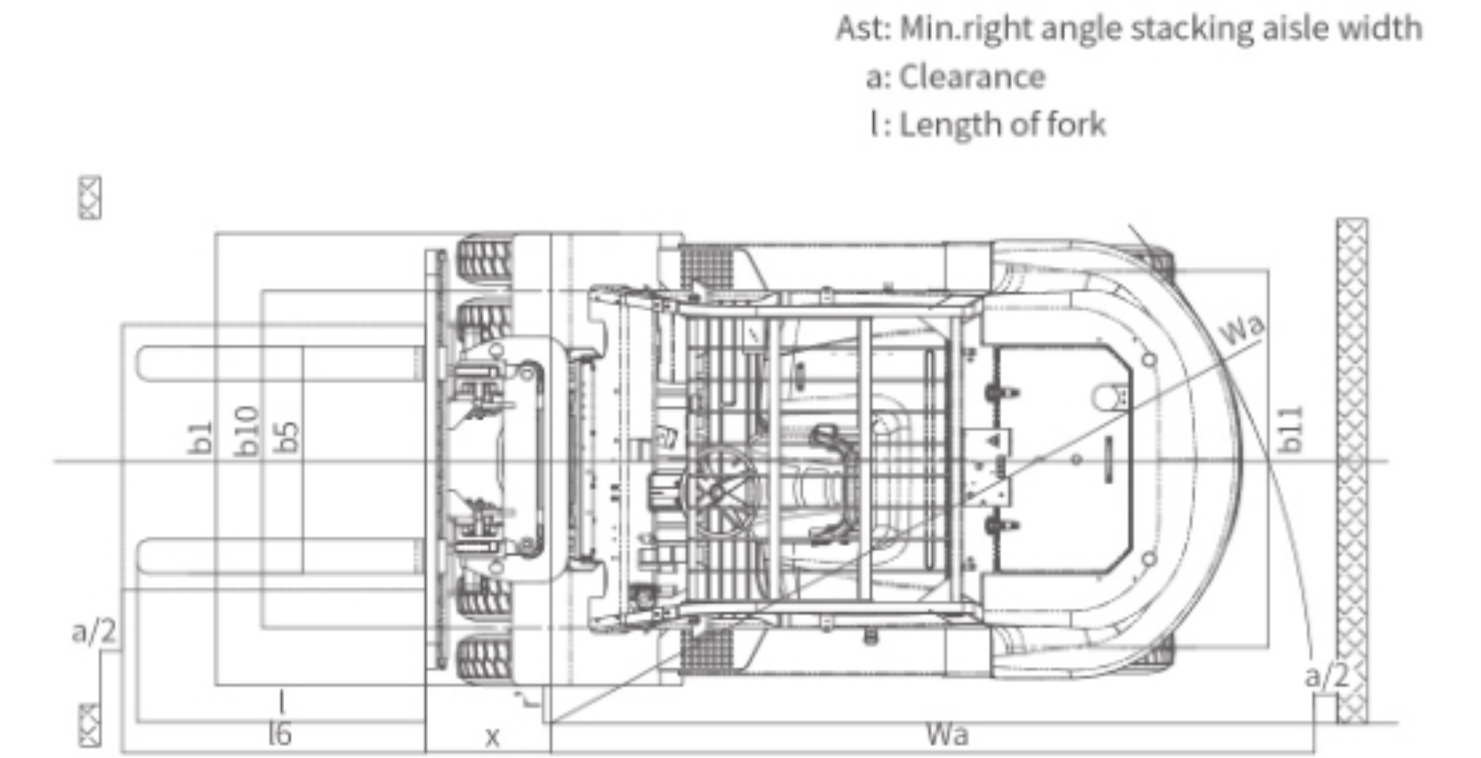
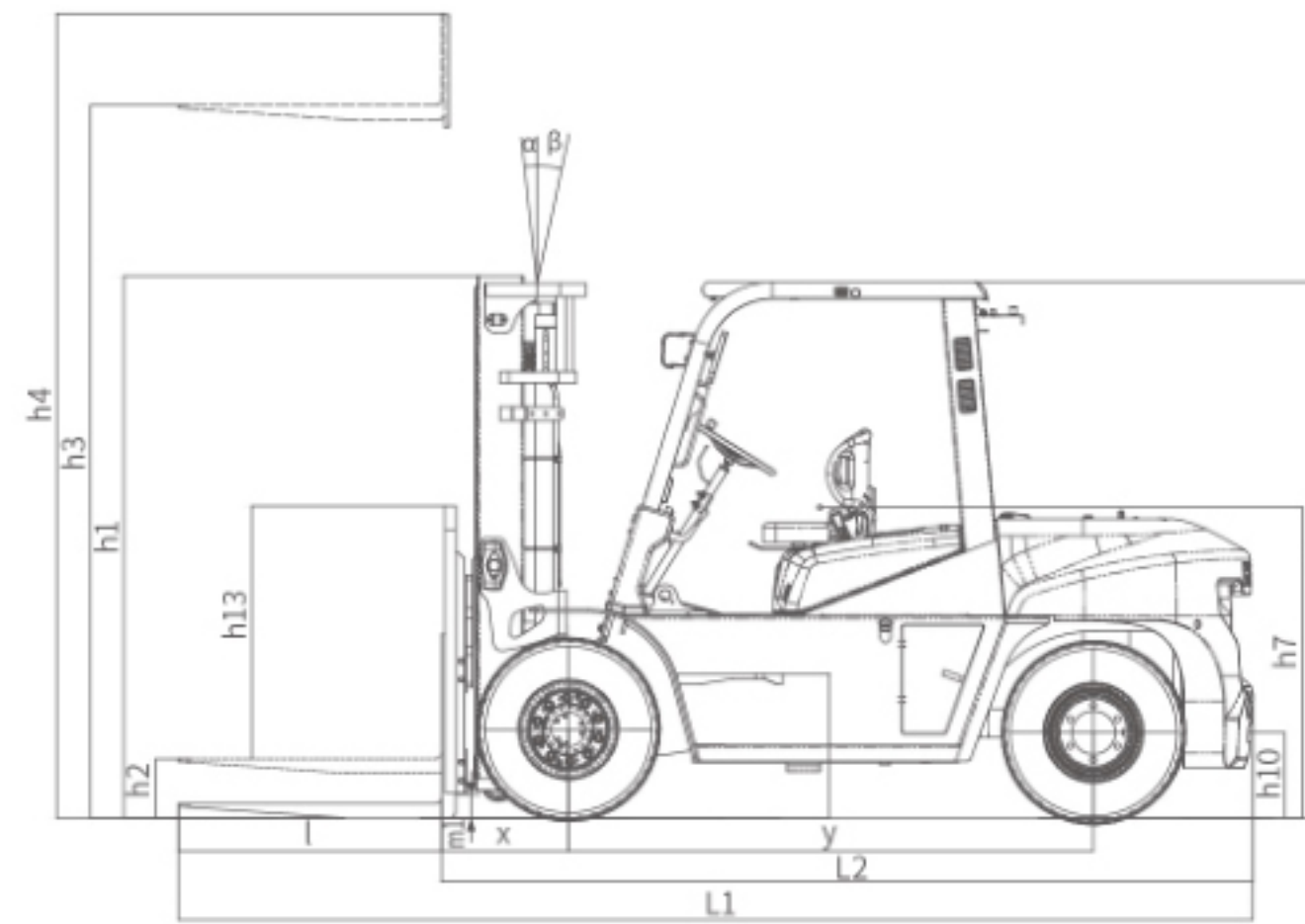
Large diameter hydraulic pipe, Standard 24 degrees conical seal.



Optional configurations for safety: Three sides lights, Rear working lamps, Blue light, Extinguisher, Warning light, Reversing radar and camera.

MANUFACTURER AND TECHNICAL DATA

| | | | | | | | | |
|---------------------|--|------------------|--|-------------|---------------|--------------|-------------|----------|
| 1.0 | Manufacturer | MAXBULL | | | | | | |
| 2.0 | Model | CPCD50 | CPCD60 | CPCD70 | CPCD80 | CPCD90 | CPCD100 | |
| 3.0 | Configuration number | W2K2 | | | | | | |
| Characteristics | | | | | | | | |
| 4.01 | Rated capacity | kg | 5000 | 6000 | 7000 | 8000 | 9000 | 10000 |
| 4.02 | Load center distance | mm | 600 | | | | | |
| 4.03 | Power mode | | Diesel | | | | | |
| 4.04 | Driving mode | | Seat-type | | | | | |
| 4.05 | Front overhang | x mm | 575 | 580 | 585 | 695 | 685 | 700 |
| 4.06 | Wheelbase | y mm | 2400 | | 2400 | | 2550 | 2850 |
| 4.07 | Total weight | kg | 8000 | 8570 | 9170 | 10040 | 11450 | 12300 |
| Dimension parameter | | | | | | | | |
| 5.01 | Mast tilt angle (forward/backward) | α/β ° | 6/12 | | | | | |
| 5.02 | Height (mast lowered) | h1 mm | 2480 | | 2547 | | 2700 | 2850 |
| 5.03 | Free lifting height | h2 mm | 155 | 160 | 165 | 170 | 190 | 200 |
| 5.04 | Lifting height (standard) | h3 mm | 3000 | | | | | |
| 5.05 | Max. height,extended (with backrest) | h4 mm | 4400 | | 4467 | | 4250 | 4415 |
| 5.06 | Height of overhead guard | h6 mm | 2450 | | 2510 | | 2560 | |
| 5.07 | Seat height relating to SIP (to ground) | h7 mm | 1430 | | 1490 | | 1540 | |
| 5.08 | Towing coupling height | h10 mm | 390 | | 450 | | 475 | |
| 5.09 | Ground clearance (between mast) | m1 mm | 180 | | 245 | | 250 | |
| 5.10 | Backrest height (Calculated from the surface of the fork) | h13 mm | 1360 | 1350 | 1345 | / | / | / |
| 5.11 | Overall length (with fork) | L1 mm | 4770 | 4850 | 4890 | 5020 | 5180 | 5440 |
| 5.12 | Overall length (without fork) | L2 mm | 3550 | 3630 | 3670 | 3800 | 3960 | 4220 |
| 5.13 | Overall width | b1 mm | 2044 | | 2124 | | 2164 | |
| 5.14 | Fork adjustable range (the external of the fork)(Max./Min.) | b5 mm | 300-1845 | | 370-1750 | | 470-1990 | 470-2100 |
| 5.15 | Fork size:thickness x width x length | s/e/l mm | 55x150x1220 | 60x150x1220 | 65x150x1220 | 70x150x1220 | 80x175x1220 | |
| 5.16 | Tread, front | b10 mm | 1520 | | 1520 | | 1600 | 1600 |
| 5.17 | Tread, rear | b11 mm | 1700 | | 1700 | | 1700 | 1700 |
| 5.18 | Right angle stacking aisle width for pallet 1000 x1200mm crossways | Ast mm | 5230 | 5280 | 5350 | 5470 | 5740 | 6060 |
| 5.19 | Min. outside turning radius | Wa mm | 3250 | 3300 | 3350 | 3400 | 3630 | 3940 |
| Performance Data | | | | | | | | |
| 6.01 | Travel speed (laden/unladen) | km/h | 25/29 | 25/29 | 25/29 | 25/29 | 25/29 | 25/29 |
| 6.02 | Lift speed (laden/unladen) | mm/s | 500/530 | 500/530 | 500/530 | 450/480 | 390/420 | 330/350 |
| 6.03 | Lowering speed (laden/unladen) | mm/s | WITHOUT LOAD \geq 300 WITH FULL LOAD \leq 600 | | | | | |
| 6.04 | Max.drawbar pull (laden) | kN | 60 | 60 | 60 | 60 | 60 | 60 |
| 6.05 | Max.gradeability (laden/unladen) | % | 35/20 | 32/20 | 30/20 | 38/20 | 25/20 | 20/20 |
| Tyres | | | | | | | | |
| 7.01 | Wheels,number front/rear (x=driven wheels) | | 4X/2 | | | | | |
| 7.02 | Tyre type front/rear | | Pneumatic-tyre | | | | | |
| 7.03 | Tyre size,front | | 8.25-15-14PR | | 8.25-20-14PR | 9.00-20-14PR | | |
| 7.04 | Tyre size,rear | | 8.25-15-14PR | | 8.25-15-14PR | 9.00-20-14PR | | |
| Combustion-engine | | | | | | | | |
| 8.01 | Engine manufacturer/Moel | | ISUZU 6BG1QC-02 | | QUANCHAI 4J1 | | | |
| 8.02 | Rated power/Speed | Kw/rpm | 82/2000 | | 88.5/2200 | | | |
| 8.03 | Max. torque/Speed | Nm/rpm | 415/1400-1600 | | 510/1320-1650 | | | |
| 8.04 | Cylinder number-bore x stroke | /L | 6-105X125/6.5 | | 4-105X125/4.3 | | | |
| 8.05 | Fuel tank capacity | L | 140 | | | | | |
| Other | | | | | | | | |
| 9.01 | Transmission type | | Hydraulic transmission - mechanical shift(electro-hydraulic directional change optional) | | | | | |
| 9.02 | Transmission number of speed (fwd/bwd) | | 2/2 | | | | | |
| 9.03 | Service brake | | Powered brake-pedal type | | | | | |
| 9.04 | Parking brake | | Mechanical-hand brake lever type | | | | | |
| 9.05 | Operating pressure for attachments | mpa | 20.5 | | 23 | 20.5 | 20.5 | |
| 9.06 | Battery voltage/Capacity | V/Ah | 2X12/80 | | | | | |



Note: The vertical axis stands for load capacity and the horizontal axis stands for load center which is calculated from the front surface of the forks to the gravity of the standard load,the standard load means a cubic with 1200mm edge length.When mast is tilted forward,using non-standard forks or loading large goods, the load capacity will be reduced.The load capacity of standard mast at different load center can be known from this load chart.

8T MAST PARAMETERS

| Mast type | Mast model | Max.lifting height (mm) | Load capacity (lode center 600mm)(kg) | | Height (mast lowered)(mm) | Free lift height (with backrest) (mm) | Service weight (kg) | Mast tilt angle α/β (°) |
|-------------------------|------------|-------------------------|---------------------------------------|--------|---------------------------|---------------------------------------|---------------------|------------------------------------|
| | | | CPCD80 | CPCD80 | | | | |
| Wide View Standard Mast | M220 | 2200 | 8000 | 2147 | 170 | 10136 | 6°/12° | |
| | M250 | 2500 | 8000 | 2297 | 170 | 10174 | 6°/12° | |
| | M270 | 2700 | 8000 | 2397 | 170 | 10201 | 6°/12° | |
| | M300 | 3000 | 8000 | 2547 | 170 | 10240 | 6°/12° | |
| | M330 | 3300 | 8000 | 2697 | 170 | 10279 | 6°/12° | |
| | M350 | 3500 | 8000 | 2797 | 170 | 10305 | 6°/12° | |
| | M375 | 3750 | 8000 | 2922 | 170 | 10338 | 6°/12° | |
| | M400 | 4000 | 8000 | 3097 | 170 | 10471 | 6°/12° | |
| | M425 | 4250 | 8000 | 3222 | 170 | 10503 | 6°/12° | |
| | M450 | 4500 | 8000 | 3347 | 170 | 10536 | 6°/12° | |
| | M475 | 4750 | 7850 | 3472 | 170 | 10569 | 6°/6° | |
| | M500 | 5000 | 7700 | 3597 | 170 | 10602 | 6°/6° | |
| Full Free 2-Stage Mast | M530 | 5300 | 7500 | 3797 | 170 | 10653 | 6°/6° | |
| | M550 | 5500 | 7300 | 3897 | 170 | 10766 | 6°/6° | |
| | M600 | 6000 | 7000 | 4147 | 170 | 10832 | 6°/6° | |
| | ZM250 | 2500 | 8000 | 2277 | 1020 | 10096 | 6°/12° | |
| | ZM270 | 2700 | 8000 | 2377 | 1120 | 10111 | 6°/12° | |
| | ZM300 | 3000 | 8000 | 2527 | 1270 | 10141 | 6°/12° | |
| | ZM330 | 3300 | 8000 | 2677 | 1420 | 10166 | 6°/12° | |
| | ZM350 | 3500 | 8000 | 2777 | 1520 | 10196 | 6°/12° | |
| | ZM375 | 3750 | 8000 | 2902 | 1645 | 10206 | 6°/12° | |
| | ZM400 | 4000 | 8000 | 3077 | 1820 | 10311 | 6°/12° | |
| | ZM425 | 4250 | 8000 | 3202 | 1945 | 10336 | 6°/12° | |
| | ZM450 | 4500 | 8000 | 3327 | 2070 | 10371 | 6°/12° | |
| Full Free 3-Stage Mast | ZM475 | 4750 | 7850 | 3452 | 2195 | 10391 | 6°/6° | |
| | ZM500 | 5000 | 7700 | 3577 | 2320 | 10411 | 6°/6° | |
| | ZM550 | 5500 | 7300 | 3877 | 2620 | 10561 | 6°/6° | |
| | ZM600 | 6000 | 7000 | 4127 | 2870 | 10601 | 6°/6° | |
| | ZSM360 | 3600 | 6700 | 2402 | 1100 | 10778 | 6°/6° | |
| | ZSM400 | 4000 | 6700 | 2527 | 1225 | 10837 | 6°/6° | |
| | ZSM435 | 4350 | 6700 | 2652 | 1350 | 10892 | 6°/6° | |
| | ZSM480 | 4800 | 6700 | 2807 | 1505 | 10967 | 6°/6° | |
| | ZSM500 | 5000 | 6700 | 2872 | 1570 | 10995 | 6°/6° | |
| | ZSM540 | 5400 | 6500 | 3007 | 1705 | 11060 | 6°/6° | |
| | ZSM600 | 6000 | 6100 | 3202 | 1900 | 11243 | 6°/6° | |
| | ZSM650 | 6500 | 5500 | 3472 | 2170 | 11354 | 6°/6° | |
| ZSM700 | 7000 | 5000 | 3577 | 2275 | 11405 | 6°/6° | | |

Note:1) 8t:free lift without backrest. 2) With internal shiftover, the lifting weight is reduced by 200kg.

5T/6T/7T MAST PARAMETERS table with columns for Mast type, Mast model, Max. lifting height, Load capacity, Height, Free lift height, Service weight, and Mast tilt angle.

Note:1) 5-6t:the free lift without backrest 260mm increase. 2) 7t:the free lift without backrest 180mm increase. 3) With internal sideshift, the lifting weight is reduced by 200kg. With external sideshifter, the lifting weight reduced by 300kg.

9T/10T MAST PARAMETERS table with columns for Mast type, Mast model, Max. lifting height, Load capacity, Height, Free lift height, Service weight, and Mast tilt angle.

Note:1)9-10t:free lift without backrest. 2)With internal sideshift, the lifting weight is reduced by 200kg.

CONFIGURATION table with columns for Configuration and General forklift (Isuzu), listing various options like Packaging method, Economic and energy saving, Intelligent security, Reliability, Comfortable and convenient, and Top frame options.

Note: "●" Standard ; "○" Optional

Configuration table with columns for Configuration and General forklift (Isuzu), listing options for Cab/wind shield, Lifting system, Lights, Tyre, and Others.

Note: "●" Standard ; "○" Optional