

## CPD 13/15/16/ 18/20SQ A2LiG3-M

| Configurations                       |   |                   |
|--------------------------------------|---|-------------------|
| For safety                           | Steering speed limit                                  | ●                 |
|                                      | Reverse handle with horn                              | ●                 |
|                                      | OPS   | ●                 |
|                                      | Safety protecting function of multiway valve overload | ●                 |
|                                      | Reverse buzzer  | ●                 |
|                                      | Upper buffering                                       | ●                 |
|                                      | Central wide-angle rearview mirror                    | ●                 |
|                                      | Rearview mirrors on two sides                         | ○                 |
|                                      | Front protective net                                  | ○                 |
|                                      | Seat with safety belt                                 | ○                 |
|                                      | Dry powder fire extinguisher (0.5kg)                  | ○                 |
|                                      | Dry powder fire extinguisher (2kg)                    | ○                 |
|                                      | Reverse Chinese voice speaker                         | ○                 |
|                                      | Reversing parking sensor (4 probes)                   | ○                 |
| Reversing image( 1 camera+ 4 probes) | ○   |                   |
| For driving comfort                  | Semi-enclosed seat                                    | ●                 |
|                                      | USB (5V/1A)   | ●                 |
|                                      | Steering with steering wheel start                    | ●                 |
|                                      | Mechanical operation valve                            | ●                 |
|                                      | Colorful instrument                                   | ●                 |
|                                      | Full suspension seat                                  | ○                 |
|                                      | Electromagnetic operated valve                        | ○                 |
|                                      | Fan   | ○                 |
|                                      | Heater  | ○                 |
|                                      | For cab/windshield                                    | Panel mounted cab |
| Front windshield                     |   | ○                 |
| Rear windshield                      |   | ○                 |
| Top windshield                       |   | ○                 |
| LED lights                           |   | ●                 |
| For lighting                         | LED flickering warning lights                         | ●                 |
|                                      | LED rear working light                                | ○                 |
|                                      | Front LED red/blue spotlight                          | ○                 |
|                                      | Rear LED red/blue spotlight                           | ○                 |
|                                      | Red/blue strip lights on rear and bilateral sides     | ○                 |
|                                      | LED rotating warning light                            | ○                 |
|                                      | LED rotating and beep warning light                   | ○                 |
| Others                               | Metric thread   | ●                 |
|                                      | Solid tyre  | ●                 |
|                                      | Solid tyre without travelling marking                 | ○                 |
|                                      | Sleeve for tilting cylinder                           | ○                 |
|                                      | FCIS  | ●                 |

Note: "●" standard; "○" optional;



**LIION 1.3-2 t**  
G3 series front wheel dual drive  
lithium battery truck (three wheel)



ANHUI MAXBULL MACHINERY TECHNOLOGY CO., LTD.

Add / No.2628 Hubei Road, Binhu District, Hefei, China  
Tel / +86-551-63852627  
Email / info@maxbull.cn  
Web / www.ahmaxbull.com

\* Our products are subject to improvements and changes without notice.

### APPEARANCE

The appearance is grand and the colors are beautiful; The performance is excellent.

G3 series family design elements

Sheet metal stamping type side cover, side door



### COMFORTABLE AND ENERGY-SAVING

The truck provides users with the best comfortable driving experience. The truck adopts advanced energy-saving technologies for a greener and more environmentally friendly environment

Wide view mast  
Optimized mast improves lateral stability.

Mobile phone and water cup holder offer convenient storage.

Optimized mast improves lateral stability.

The steering wheel is sensitive, lightweight, precise, and power-saving when starting and turning.

The steering wheel is optimized with height reduction  
And structure improving;  
Adjustable angle; Comfortable operation

Color screen instrument

PES third gear adjustment

|   |               |  |
|---|---------------|--|
| P | Powerful      | } Multi performance modes satisfy the needs of various working conditions. |
| E | Economical    |  |
| S | Energy-saving |  |

### FRONT WHEEL DUAL DRIVE MOTORS PROVIDE MORE POWER



16km/h  
Driving speed



20%  
Maximum gradeability with load



Good bearing capacity at high position



0.45 m/s  
Maximum lifting speed with load



0.6 m/s  
Maximum lifting speed without load



Strong performance:  
The truck is equipped with ZF dual motor drive unit.



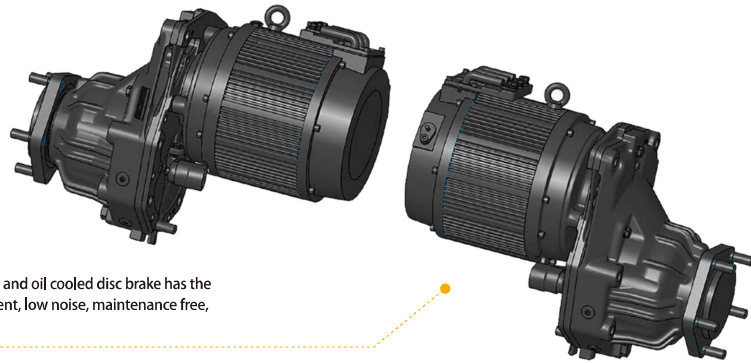
The truck has small turning radius and good passability.



The minimum turning radius is as low as 1515mm

### TABLE AND RELIABLE

The product is designed with the concept of stability and reliability, and has undergone multiple rigorous tests and verifications.



Wet type service brake and oil cooled disc brake has the characteristics of efficient, low noise, maintenance free, and reliable.



National standard fast charging port supports up to 200A fast charging



The entire truck and its components meet the latest CE & UKCA requirements.

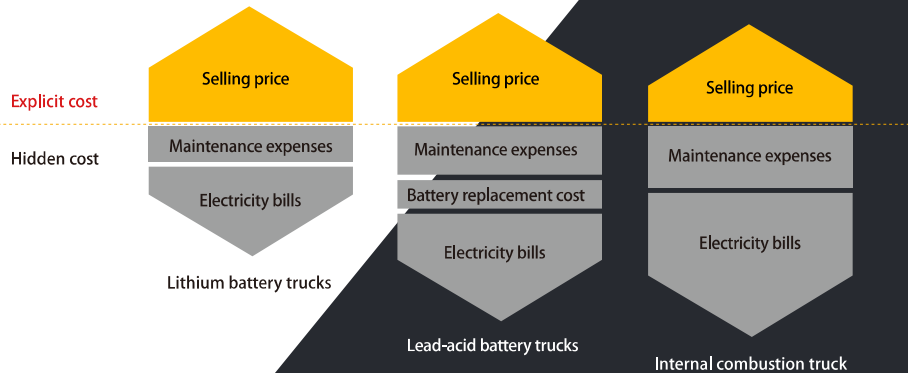


Ratchet type hand brake is safe and reliable.

### OPERATING COSTS:

Lithium battery forklift truck VS Lead-acid battery forklift truck VS internal combustion forklift truck

The superiority of our lithium battery forklift is more prominent in its cost of use throughout its lifecycle. Compared with lead-acid battery truck and internal combustion truck, lithium battery truck are more cost-effective due to their maintenance free and high energy conversion rates. Compared to internal combustion trucks, lithium battery trucks have advantages such as no noise, no pollution, low vibration, and simple operation. Lithium battery trucks have the characteristics of fast charging and on-demand charging compared to lead-acid battery trucks, making them more suitable for multi shift work applications.



### STRICT TEST

Rain test, reliability enhancement test, vibration test, bumps test



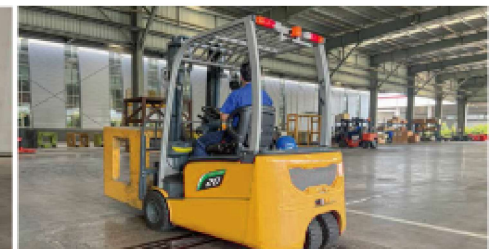
**Rain test**  
the truck reaches to IPX4 protection level after simulating operation under 15 min rainstorm and it meets outdoor operation requirements.



**Vibration test**  
Conduct vibration frequency testing on the truck to optimize and improve operational comfort.



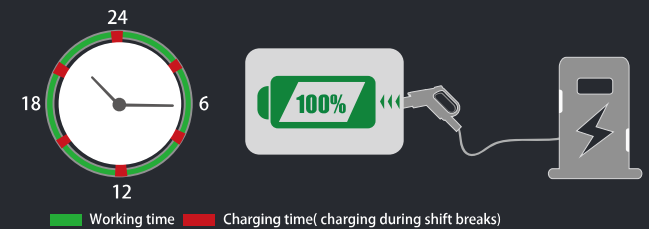
**Cold storage test**  
The whole truck was operated alternately in a -20 °C cold storage for 6 hours, and parked in the cold storage for 12 hours. The whole truck has no faults and could operate continuously



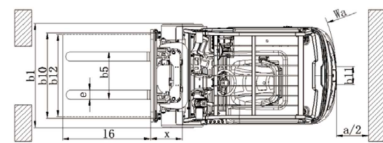
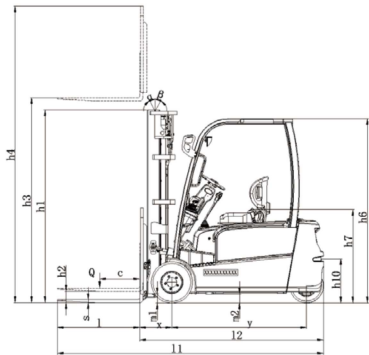
**Reliability enhancement test**  
The truck undergoes 800 hours of enhancement test (including climbing, rain exposure, bumpy road surfaces, etc.).

### FAST CHARGING AND ULTRA LONG BATTERY LIFE

- The truck is standard equipped with 202Ah lithium battery which has ultra long battery life.
- The battery satisfies uninterrupted operation during all day.
- The 2t truck model can be equipped with a maximum optional 404Ah lithium battery.



| Manufacturer and Technical Data |   |                |          |                      |            |            |
|---------------------------------|---|----------------|----------|----------------------|------------|------------|
| Characteristics                 |   |                |          |                      |            |            |
| MAXBULL                         |   |                |          |                      |            |            |
| 1.01                            | Manufacturer  |                |          |                      |            |            |
| 1.02                            | Model   |                | CPD135Q  | CPD155Q              | CPD165Q    | CPD185Q    |
| 1.03                            | Configuration number  |                | A2LIG3-M | A2LIG3-M             | A2LIG3-M   | A2LIG3-M   |
| 1.04                            | Rated capacity  | Q              | kg       | 1300                 | 1500       | 1600       |
| 1.05                            | Load center distance  | c              | mm       |                      |            | 500        |
| 1.06                            | Power mode  |                |          | Lithium Battery      |            |            |
| 1.07                            | Driving mode  |                |          | seated               |            |            |
| 1.08                            | Front overhang  | x              | mm       | 367                  | 367        | 367        |
| 1.09                            | Wheelbase   | y              | mm       | 1292                 | 1292       | 1292       |
| Weight                          |   |                |          |                      |            |            |
| 2.01                            | Total weight (with/without battery)                               |                | kg       | 2790/2510            | 2930/2650  | 3030/2750  |
| 2.02                            | Axle load (laden,front/rear)                                      |                | kg       | 3570/520             | 3870/560   | 4035/595   |
| 2.03                            | Axle load (unladen,front/rear)                                    |                | kg       | 1400/1390            | 1365/1565  | 1360/1670  |
| Tyres                           |   |                |          |                      |            |            |
| 3.01                            | Tyre type   |                |          | Solid                | Solid      | Solid      |
| 3.02                            | Tyre size,front   |                |          | 18×7-8               | 18×7-8     | 18×7-8     |
| 3.03                            | Tyre size,rear  |                |          |                      |            | 140/55-9   |
| 3.04                            | Wheel, number front/rear(x=driven wheels)                         |                |          |                      |            | 2×/2       |
| 3.05                            | Tread, front  | b10            | mm       | 920                  | 920        | 920        |
| 3.06                            | Tread, rear   | b11            | mm       |                      |            | 205        |
| Dimensions                      |   |                |          |                      |            |            |
| 4.01                            | Mast tilt angle (forward/backward)                                | $\alpha/\beta$ |          |                      |            | 5/7        |
| 4.02                            | Height (mast lowered)   | h1             | mm       | 2025                 | 2025       | 2025       |
| 4.03                            | Free lifting height   | h2             | mm       | 85                   | 85         | 85         |
| 4.04                            | Lifting height (standard)   | h3             | mm       |                      |            | 3000       |
| 4.05                            | Max. height, extended (with backrest)                             | h4             | mm       |                      |            | 4038       |
| 4.06                            | Height of overhead guard  | h6             | mm       |                      |            | 2040       |
| 4.07                            | Seat height relating to SIP (to ground)                           | h7             | mm       |                      |            | 1042       |
| 4.08                            | Towing coupling height  | h10            | mm       |                      |            | 482        |
| 4.09                            | Overall length (with fork)  | l1             | mm       | 2765                 | 2810       | 2825       |
| 4.10                            | Overall length (without fork)                                     | l2             | mm       | 1845                 | 1890       | 1905       |
| 4.11                            | Overall width   | b1             | mm       | 1076                 | 1076       | 1076       |
| 4.12                            | Fork size:thickness x width x length                              | s/e/l          | mm       | 35×100×920           | 35×100×920 | 35×100×920 |
| 4.13                            | Fork carriage, according to ISO2328                               |                |          |                      |            | 2A         |
| 4.14                            | Distance across fork-arms, Max./Min.                              | b5             | mm       | 960/200              | 960/200    | 960/200    |
| 4.15                            | Ground clearance (at mast)  | m1             | mm       |                      |            | 90         |
| 4.16                            | Ground clearance (center of wheelbase)                            | m2             | mm       |                      |            | 100        |
| 4.17                            | Right angle stacking aisle width for pallet1000 x1200mm crossways | Ast            | mm       | 3155                 | 3200       | 3220       |
| 4.18                            | Right angle stacking aisle width for pallet800 x1200mm lengthways | Ast            | mm       | 3285                 | 3330       | 3350       |
| 4.19                            | Min. outside turning radius                                       | Wa             | mm       | 1470                 | 1515       | 1530       |
| Performance Data                |   |                |          |                      |            |            |
| 5.01                            | Travel speed (laden/unladen)                                      |                | km/h     | 16/16                | 16/16      | 16/16      |
| 5.02                            | Lift speed (laden/unladen)  |                | mm/s     | 450/600              | 450/600    | 430/600    |
| 5.03                            | Lowering speed (laden/unladen)                                    |                | mm/s     |                      |            | 470/500    |
| 5.04                            | Max.drawbar pull (laden)  |                | N        | 13500                | 13500      | 13500      |
| 5.05                            | Max.gradeability (laden/unladen)                                  |                | %        | 20                   | 20         | 20         |
| 5.06                            | Acceleration time(10 m)(laden/unladen)                            |                | s        | 5.4/5                | 5.4/5      | 5.4/5      |
| Battery                         |   |                |          |                      |            |            |
| 6.01                            | Battery voltage/Capacity  |                | V/Ah     | 80/150               | 80/202     | 80/202     |
| 6.02                            | Battery weight  |                | kg       | 280                  | 280        | 280        |
| Motor and controller            |   |                |          |                      |            |            |
| 7.01                            | Driving motor powering (S2-60min)                                 |                | kW       | 5.5×2                | 5.5×2      | 5.5×2      |
| 7.02                            | Lifting motor powering (S3-15%)                                   |                | kW       | 12                   | 16.5       | 16.5       |
| 7.03                            | Driving motor controlling mode                                    |                |          |                      | MOSFET/AC  | MOSFET/AC  |
| 7.04                            | Lifting motor controlling mode                                    |                |          |                      | MOSFET/AC  | MOSFET/AC  |
| Addition data                   |   |                |          |                      |            |            |
| 8.01                            | Service brake/Parking brake                                       |                |          | Hydraulic/mechanical |            |            |
| 8.02                            | Relief pressure   |                | Mpa      | 17.5                 | 17.5       | 17.5       |



Ast: Right angle stacking aisle width  
a: Clearance 200mm

| Wide View Standard Mast |                         |                                       |      |      |      |      |                           |                                |          |      |                     |      |      |                                       |     |
|-------------------------|-------------------------|---------------------------------------|------|------|------|------|---------------------------|--------------------------------|----------|------|---------------------|------|------|---------------------------------------|-----|
| Mast Model              | Max lifting height (mm) | Load capacity (lode center 500mm)(kg) |      |      |      |      | Height (mast lowered)(mm) | Free lift (with backrest) (mm) |          |      | Service weight (kg) |      |      | Mast tilting angle (°) $\alpha/\beta$ |     |
|                         |                         | 1.3t                                  | 1.5t | 1.6t | 1.8t | 2t   |                           | 1.3-2t                         | 1.3-1.8t | 2t   | 1.3t                | 1.5t | 1.6t |                                       |     |
| M200                    | 2000                    | 1300                                  | 1500 | 1600 | 1800 | 2000 | 1525                      | 85                             | 90       | 2724 | 2864                | 2964 | 3114 | 3174                                  | 5/7 |
| M250                    | 2500                    | 1300                                  | 1500 | 1600 | 1800 | 2000 | 1775                      | 85                             | 90       | 2757 | 2897                | 2997 | 3147 | 3207                                  | 5/7 |
| M300                    | 3000                    | 1300                                  | 1500 | 1600 | 1800 | 2000 | 2025                      | 85                             | 90       | 2790 | 2930                | 3030 | 3180 | 3240                                  | 5/7 |
| M330                    | 3300                    | 1300                                  | 1500 | 1600 | 1800 | 2000 | 2175                      | 85                             | 90       | 2810 | 2950                | 3050 | 3200 | 3260                                  | 5/7 |
| M350                    | 3500                    | 1300                                  | 1500 | 1600 | 1800 | 2000 | 2275                      | 85                             | 90       | 2823 | 2963                | 3063 | 3213 | 3273                                  | 5/7 |
| M370                    | 3700                    | 1300                                  | 1500 | 1600 | 1800 | 2000 | 2375                      | 85                             | 90       | 2837 | 2977                | 3077 | 3227 | 3287                                  | 5/7 |
| M400                    | 4000                    | 1300                                  | 1500 | 1600 | 1800 | 2000 | 2575                      | 85                             | 90       | 2888 | 3028                | 3128 | 3278 | 3338                                  | 3/5 |
| M425                    | 4250                    | 1300                                  | 1500 | 1600 | 1750 | 1900 | 2700                      | 85                             | 90       | 2905 | 3045                | 3145 | 3295 | 3355                                  | 3/5 |
| M450                    | 4500                    | 1200                                  | 1400 | 1500 | 1700 | 1850 | 2825                      | 85                             | 90       | 2921 | 3061                | 3161 | 3311 | 3371                                  | 3/5 |
| M500                    | 5000                    | 1100                                  | 1300 | 1400 | 1600 | 1700 | 3075                      | 85                             | 90       | 2980 | 3120                | 3220 | 3370 | 3430                                  | 3/3 |

| Wide View Full Free 2-Stage Mast |                         |                                       |      |      |      |      |                           |                                |          |      |                     |      |      |                                       |     |
|----------------------------------|-------------------------|---------------------------------------|------|------|------|------|---------------------------|--------------------------------|----------|------|---------------------|------|------|---------------------------------------|-----|
| Mast Model                       | Max lifting height (mm) | Load capacity (lode center 500mm)(kg) |      |      |      |      | Height (mast lowered)(mm) | Free lift (with backrest) (mm) |          |      | Service weight (kg) |      |      | Mast tilting angle (°) $\alpha/\beta$ |     |
|                                  |                         | 1.3t                                  | 1.5t | 1.6t | 1.8t | 2t   |                           | 1.3-2t                         | 1.3-1.8t | 2t   | 1.3t                | 1.5t | 1.6t |                                       |     |
| ZM200                            | 2000                    | 1300                                  | 1500 | 1600 | 1800 | 2000 | 1525                      | 510                            | 515      | 2718 | 2858                | 2958 | 3108 | 3168                                  | 5/7 |
| ZM250                            | 2500                    | 1300                                  | 1500 | 1600 | 1800 | 2000 | 1775                      | 760                            | 765      | 2749 | 2889                | 2989 | 3139 | 3199                                  | 5/7 |
| ZM300                            | 3000                    | 1300                                  | 1500 | 1600 | 1800 | 2000 | 2025                      | 1010                           | 1015     | 2780 | 2920                | 3020 | 3170 | 3230                                  | 5/7 |
| ZM330                            | 3300                    | 1300                                  | 1500 | 1600 | 1800 | 2000 | 2175                      | 1160                           | 1165     | 2798 | 2938                | 3038 | 3188 | 3248                                  | 5/7 |
| ZM350                            | 3500                    | 1300                                  | 1500 | 1600 | 1800 | 2000 | 2275                      | 1260                           | 1265     | 2810 | 2950                | 3050 | 3200 | 3260                                  | 5/7 |
| ZM370                            | 3700                    | 1300                                  | 1500 | 1600 | 1800 | 2000 | 2375                      | 1360                           | 1365     | 2822 | 2962                | 3062 | 3212 | 3272                                  | 5/7 |
| ZM400                            | 4000                    | 1300                                  | 1500 | 1600 | 1800 | 2000 | 2575                      | 1560                           | 1565     | 2872 | 3012                | 3112 | 3262 | 3322                                  | 3/5 |

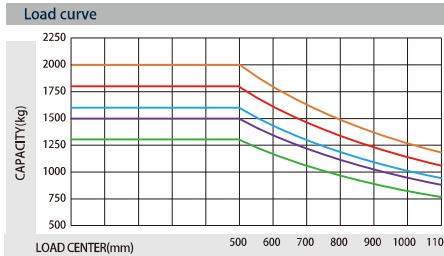
Note: the free lifting height increases by 449mm without backrest.

| Wide View Full Free 3-Stage Mast |                         |                                       |      |      |      |      |                           |                                |          |      |                     |      |      |                                       |     |
|----------------------------------|-------------------------|---------------------------------------|------|------|------|------|---------------------------|--------------------------------|----------|------|---------------------|------|------|---------------------------------------|-----|
| Mast Model                       | Max lifting height (mm) | Load capacity (lode center 500mm)(kg) |      |      |      |      | Height (mast lowered)(mm) | Free lift (with backrest) (mm) |          |      | Service weight (kg) |      |      | Mast tilting angle (°) $\alpha/\beta$ |     |
|                                  |                         | 1.3t                                  | 1.5t | 1.6t | 1.8t | 2t   |                           | 1.3-2t                         | 1.3-1.8t | 2t   | 1.3t                | 1.5t | 1.6t |                                       |     |
| ZSM360                           | 3600                    | 1300                                  | 1500 | 1600 | 1800 | 2000 | 1790                      | 781                            | 786      | 2899 | 3039                | 3139 | 3289 | 3349                                  | 3/5 |
| ZSM400                           | 4000                    | 1300                                  | 1500 | 1600 | 1800 | 2000 | 1925                      | 916                            | 921      | 2928 | 3068                | 3168 | 3318 | 3378                                  | 3/5 |
| ZSM435                           | 4350                    | 1200                                  | 1400 | 1500 | 1700 | 1900 | 2040                      | 1031                           | 1036     | 2948 | 3088                | 3188 | 3338 | 3398                                  | 3/5 |
| ZSM450                           | 4500                    | 1200                                  | 1400 | 1500 | 1700 | 1850 | 2090                      | 1081                           | 1086     | 2958 | 3098                | 3198 | 3348 | 3408                                  | 3/5 |
| ZSM470                           | 4700                    | 1100                                  | 1350 | 1450 | 1650 | 1750 | 2160                      | 1151                           | 1156     | 2972 | 3112                | 3212 | 3362 | 3422                                  | 3/5 |
| ZSM480                           | 4800                    | 1100                                  | 1350 | 1450 | 1650 | 1750 | 2190                      | 1181                           | 1186     | 2978 | 3118                | 3218 | 3368 | 3428                                  | 3/5 |
| ZSM500                           | 5000                    | 1000                                  | 1200 | 1300 | 1600 | 1700 | 2290                      | 1281                           | 1286     | 2998 | 3138                | 3238 | 3388 | 3448                                  | 3/3 |
| ZSM540                           | 5400                    | 900                                   | 1050 | 1150 | 1250 | 1400 | 2425                      | 1416                           | 1421     | 3027 | 3167                | 3267 | 3417 | 3477                                  | 3/3 |
| ZSM600                           | 6000                    | 750                                   | 800  | 900  | 1000 | 1100 | 2640                      | 1631                           | 1636     | 3112 | 3252                | 3352 | 3502 | 3562                                  | 3/3 |
| ZSM650                           | 6500                    | 550                                   | 700  | 800  | 900  | 1000 | 2830                      | 1821                           | 1826     | 3146 | 3286                | 3386 | 3536 | 3596                                  | 3/3 |

Note: the free lifting height increases by 449mm without backrest.

| Lithium battery charger                    |   |     |     |     |   |     |     |     |     |     |     |
|--|---|-----|-----|-----|---|-----|-----|-----|-----|-----|-----|
| Lithium battery brand                      | 和鼎HEDING                                |     |     |     | 鹏成ENEROC                                |     |     |     |     |     |     |
|  | 150                                     | 202 | 280 | 404 | 150                                     | 200 | 228 | 268 | 302 | 346 | 400 |
| CPD135Q                                    | ●                                       | ○   | ○   | —   | ○                                       | ○   | ○   | ○   | ○   | —   | —   |
| CPD15/16/185Q                              | —                                       | ○   | ○   | —   | —                                       | ○   | ○   | ○   | ○   | —   | —   |
| CPD205Q                                    | —                                       | ●   | ○   | ○   | —                                       | —   | ○   | ○   | ○   | ○   | ○   |
| Low temperature heating of lithium battery |   |     |     |     |   |     |     |     |     |     |     |
| Charger                                    | D80V100AL-123 (充电器)/D80V100AL-423 (充电器) |     |     |     | D80V200AL-123 (充电器)/D80V200AL-423 (充电器) |     |     |     |     |     |     |

注: ● 标配 ○ 选配 — 不可配



Note: The vertical axis stands for load capacity while the horizontal axis stands for load center which is calculated from the front surface of the forks to the gravity of the standard load. The standard load means a cubic with 1000mm edge length. When the mast is tilted forward, the worker using nonstandard forks for loading large goods, the load capacity will be reduced. The load capacity of standard mast at different load center can be known from this load chart.