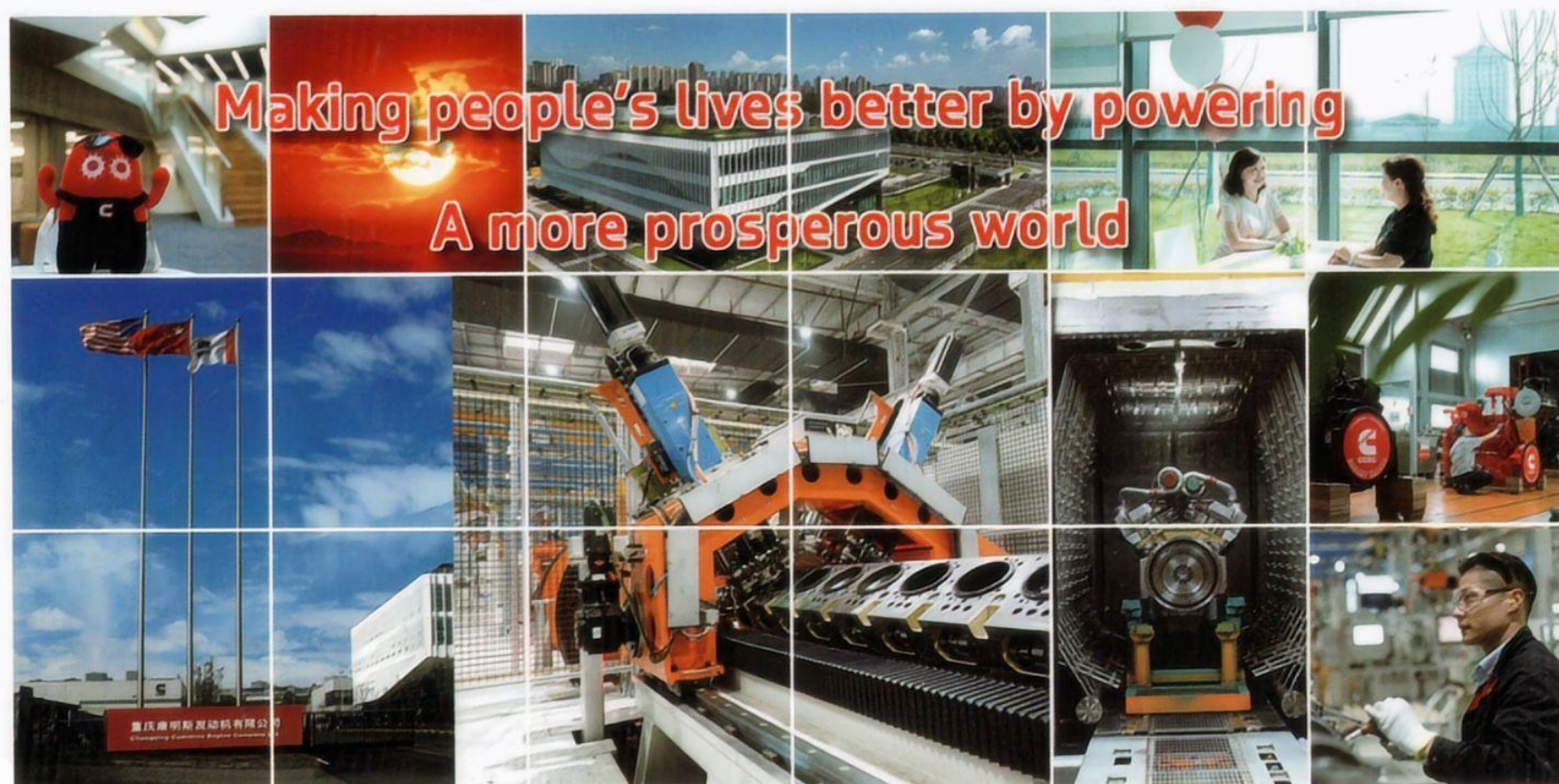


**Power Onward™**  
力无限 行致远

**重庆康明斯工业用  
发动机销售手册**  
**Industrial Engine  
Sales Handbook**



**驱动世界前行 实现至美生活**





公司简介 INTRODUCTION ..... 3

重庆康明斯的品牌优势 BRAND ADVANTAGES..... 5

重庆康明斯的技术优势 TECHNOLOGY ADVANTAGES..... 7

重庆康明斯的质量优势 QUALITY ADVANTAGES ..... 8

重庆康明斯的服务优势 SERVICE ADVANTAGES ..... 9

工业用发动机的特点 CHARACTERISTICS.....13

重庆康明斯的主要产品 PRIME PRODUCTS.....14

典型应用 TYPICAL APPLICATION..... 23

公司简介

INTRODUCTION

重庆康明斯系中美合资企业，成立于 1995 年，是康明斯在华本地化生产的起点和最早的发动机合资企业，也是中方母公司——重庆机电股份有限公司骨干子企业。重庆康明斯位于重庆市两江新区，占地面积达 400 亩，按照康明斯全球先进标准打造，拥有业界领先的设备及软件配套，集创新技术中心、智能制造体系、高效物流系统于一身。

Established in 1995, Chongqing Cummins, a Sino-American joint venture, is the initiative step of localized manufacturing of Cummins and its first engine joint venture in China. Chongqing Cummins is also the key subsidiary of its Chinese parent company——Chongqing Machinery & Electric Co., Ltd. Located in Liang jiang New Area, Chongqing, the company covers an area of 400 acres, built in accordance with Cummins’ global advanced standards, with industry-leading equipment and software support, integrating innovative technology center, intelligent manufacturing system and efficient logistics system.

重庆康明斯专业生产柴油发动机和天然气发动机，产品功率范围 185-3650 马力。公司为广大用户提供丰富的产品矩阵及多元动力解决方案，包括 M11/QSM11、X12/13、Z13、NT855/QSN、M15、K19/QSK19、K38/QSK38 和 K50/QSK50 系列产品，广泛适用于重型汽车、工程机械、矿山机械、石油机械、轨道机械、港口机械、固定式和移动式柴油发电机组、船舶推进动力机组和辅助动力机组、泵类动力机组以及其它动力机组。重庆康明斯享有康明斯全球过万个服务网点为客户提供产品和服务支持。

The company’s products cover both diesel engines and natural gas engines, with a power range of 185-3650



horsepower. It provides users with a rich product matrix and multiple power solutions, including M11/QSM11, X12/13, Z13, NT855/QSN, M15, K19/QSK19, K38/QSK38 and K50/QSK50 series products, widely applied in on-road and off-road application scenarios such as heavy duties, construction, mining, oil and gas, rail, port, fixed and mobile diesel generator sets, marine propulsion power sets and auxiliary power sets, pump power sets and other power sets. Chongqing Cummins enjoys fully support by Cummins Inc. with more than ten thousand global service outlets to provide products and service for its customers.



## 重庆康明斯的品牌优势

## BRAND ADVANTAGES

■ 康明斯是世界上历史最悠久的发动机制造商之一，从 1919 年生产出第 1 台发动机距今已超过 100 年，作为全球动力技术先行者，康明斯设计、制造、分销多元的动力解决方案，并提供服务支持。

Cummins Inc. is one of the manufacturers with the longest history in engine manufacture. It has been over 100 years of history since the first engine was produced in 1919. Cummins Inc., a global power technology leader, is a corporation of complementary business segments that design, manufacture, distribute and service a broad portfolio of power solutions.

■ 拥有业内最为宽广的柴油和天然气发动机产品线，排量 2.8~95 升，功率范围 46-4200 马力。

With the extensive product lines of diesel engines and natural gas engines in the industry and the displacement of products is from 2.8L-95L and covers the power range varying from 46-4200hp.

■ 康明斯发动机满足世界日益严格的汽车排放(美国 US EPA 2007/2010, 欧 IV 和欧 V)、非公路机动设备排放 (Tier 3 以上) 以及船机排放 (国际海事组织 IMO) 标准，在激烈的市场竞争中，一直居于业内领先地位。

Cummins engines meet the increasingly stringent global vehicles emission standards (US EPA 2007/2010, Euro IV and Euro V), equipment emission standards of off-highway motor vehicles and International Maritime Organization (IMO) Standards of marine engines and hold the leading role all along in the fierce market competition.

■ 遍布全球 190 多个国家和地区的 500 家分支机构和 10600 多个经销商网点为客户提供服务。

500 distribution branches in over 190 countries and regions and more than 10600 distribution network provide service to customers.

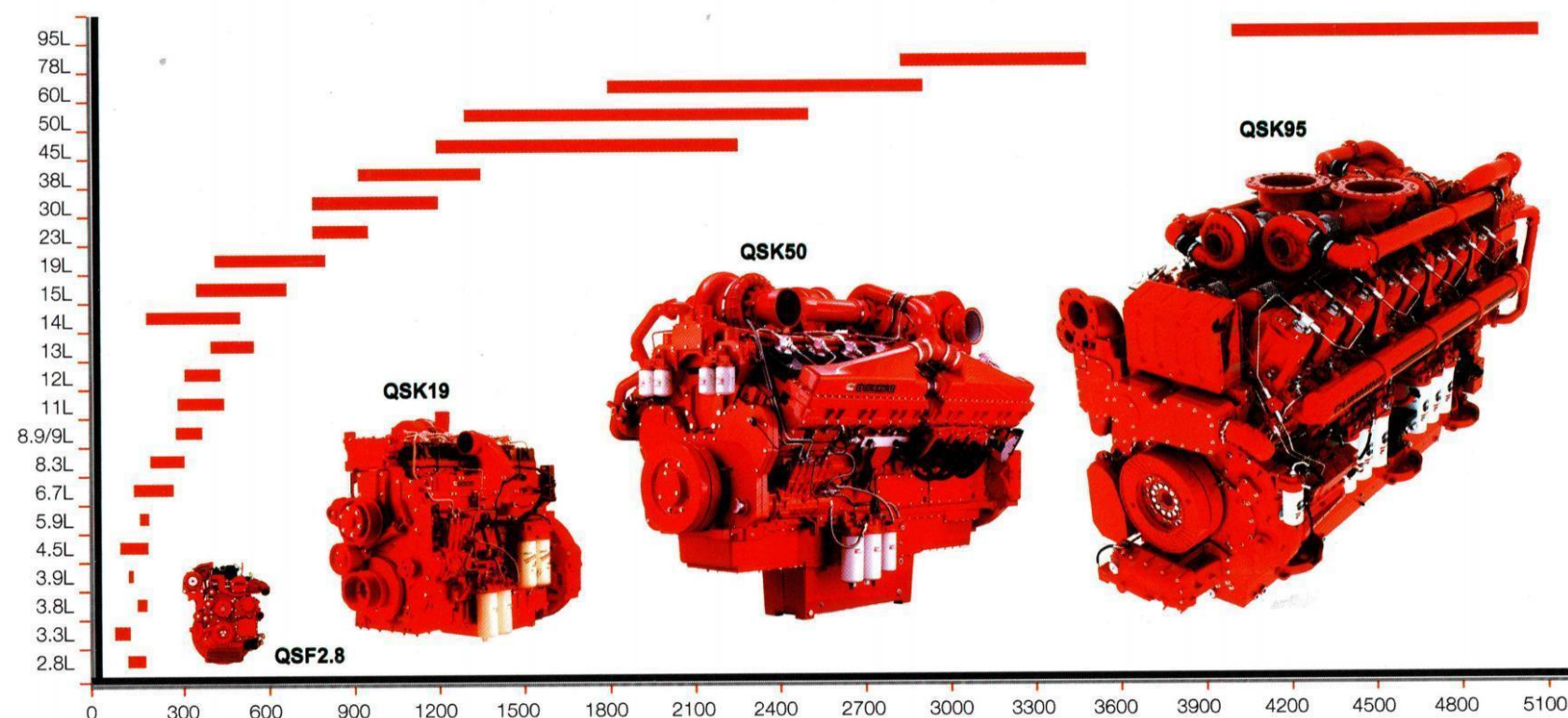
■ 康明斯发动机被全球用户广泛应用于：电力、汽车、工程机械、船舶、轨道、油田等领域。

Cummins engines have wide application in the fields of power, auto vehicle, construction machinery, marine craft, railcar and oil exploration etc..



■ 康明斯全线产品进入中国，本地化生产和研发相结合，16家工厂生产发动机、发电机、发电机组和零部件等产品，建立了完善的销售和服务网络。

The full product lines of Cummins entered into China, combining the localized production with the research & development, 16 plants produced engines, power generators, generator sets and parts & components etc. and also established sound sales & service network.



## 重庆康明斯的技术优势

## TECHNOLOGY ADVANTAGES

■ 始终与康明斯最新技术保持同步，专业生产康明斯11-50升重载和大功率发动机，功率范围宽广185-3650马力。  
Keeping pace with the updated technology of Cummins all along, specialized in the production of the heavy duty and HHP engines varying from 11L-50L and the extensive power range of engines covers from 185-3650HP.

■ 先进的制造技术造就了发动机一流的可靠性、耐久性和燃油经济性。无论在南极的严寒、中东和非洲沙漠的高温，还是在青藏高原的高海拔地区等极端恶劣环境下，重庆康明斯发动机都能始终如一的为用户提供强劲的动力。  
Advanced manufacturing technology creates the first-class reliability, durability and fuel-economy of engines. No matter in what kinds of extreme environment including in Antarctic, Middle East or Africa and in Qinghai Tibet Plateau, CCEC engines could provide consistent and robust power for customers.

■ 在满足现有用户需求的同时，不断推陈出新，开发满足市场需求的新产品；全电控 QSN、QSK19、QSK38 发动机满足中国非道路第三阶段排放法规。  
Make continuous efforts on new products development to meet the market demands. Its fully-controlled engines QSN, QSK19, QSK38 meet China National Stage III Emission Regulations for Non-road Vehicles.

■ 专业资深的应用工程团队为用户提供成熟的产品配套设计、现场技术支持、用户培训等售前服务，解决用户产品配套设计时所产生的问题和困难。  
Professional application engineering teams provide customers with the mature products application design, on-site technology support and customers training etc. presales service and help the customers to solve the problems and difficulties resulted from products application design.



## 重庆康明斯的质量优势

## QUALITY ADVANTAGES

- 重庆康明斯的质量、环境和职业健康安全管理体系均通过了法国 BV、英国 SGS 的认证，获得了 ISO9001、ISO14001、ISO45001 和 ISO50001 认证证书。

CCEC has obtained the ISO9001 Certification from BV, France and the ISO14001/ISO45001/ISO50001 Certification from SGS, UK.

- 重庆康明斯严格执行中国国家标准、美国康明斯公司的产品技术标准和质量标准。

CCEC strictly complies with the National Standards of China and the Product Technology & Quality Standards of Cummins Inc..

- 重庆康明斯的零部件供货商均纳入康明斯的质量管理体系，按照康明斯的技术和质量标准供货。

CCEC's component suppliers are all incorporated into Cummins Quality Control System and comply with Cummins Product Technology & Quality Standards.



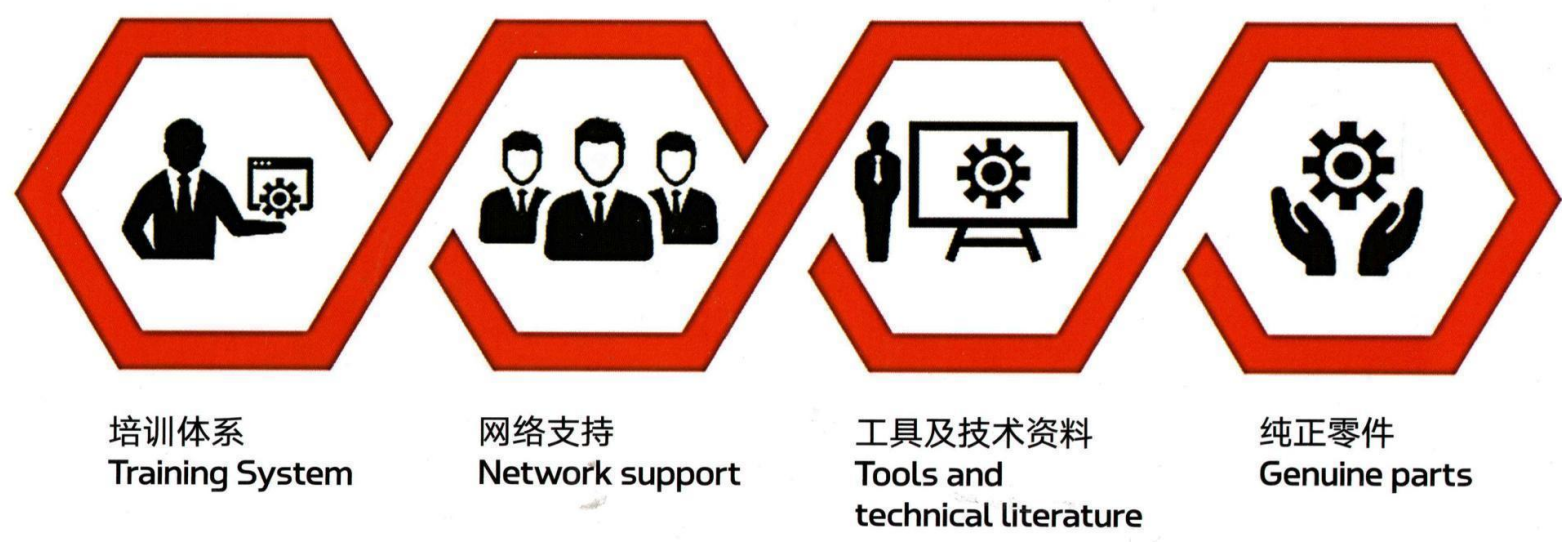
## 重庆康明斯的服务优势

## SERVICE ADVANTAGES

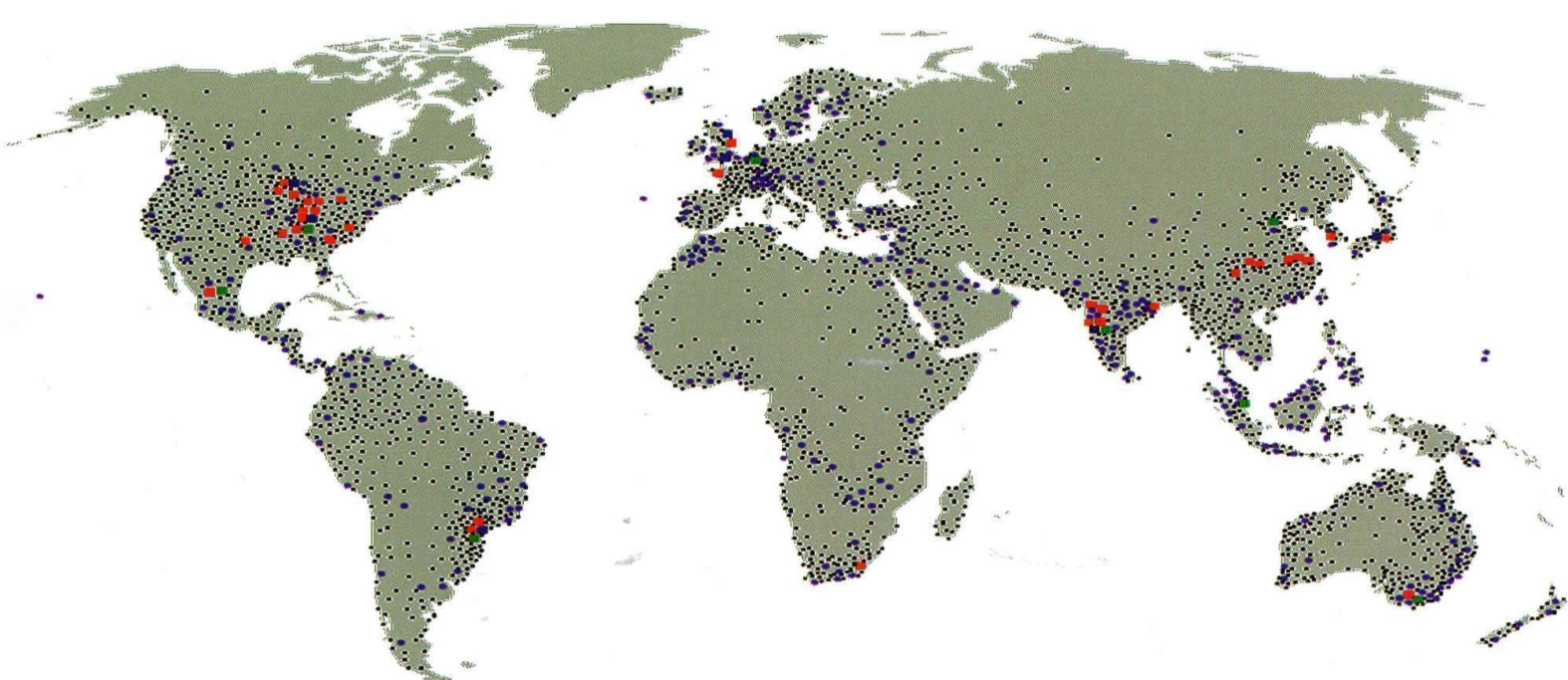




康明斯通过专业的培训体系、服务网络和多品系统正零件，为客户提供可靠支持。  
Cummins provides reliable support to customers through professional training system, service network and multi-product genuine parts.



康明斯全球服务网络 Cummins Global Service Network



190 Countries & Territories	500 Distributor Locations	10600 Dealer Locations
--------------------------------	------------------------------	---------------------------



# 工业用发动机的特点

## CHARACTERISTICS

- 可靠性高：高强度合金铸造缸体、可锻铸铁（FCD）活塞，刚性更好，降低振动和噪声，提高了发动机适应更高的爆发压力。  
High reliability: intensified alloy casting cylinder and Ferrous Cast Ductile (FCD) piston provide engine a better rigidity performance and lower vibration & noise, and also make the engine adapt to higher explosion pressure.
- 燃油经济性好：先进的燃油控制系统，独有的 STC、ESTC 分级控制系统，特殊设计的活塞顶部燃烧室，高压喷射燃油，充分雾化，燃烧充分。  
Good fuel economy: Advanced fuel control system, unique STC, ESTC step control system, specially-designed piston top chamber and high pressure fuel injection lead to an excellent fuel consumption rate and emission performance of engine.
- 瞬态性能优异：完美的发动机整体设计，配合康明斯独特的 EFC 系统，控制精度高，响应时间快。  
Excellent transient performance: perfect overall engine design with unique Cummins EFC system, high precision on control and quick response time.
- 发动机升功率高：整体设计紧凑，外形布置合理，运行平稳。  
High lift power: Integrated and compact design, reasonable layout and smooth operation.
- 电喷机型 QSNT、QSK19、QSK38、QSK50 满足中国非道路第三阶段排放法规要求。  
Electric fuel injection engines (QSNT,QSK19,QSK38) meet China National Stage III Emission Regulations for Non-road Vehicles
- 零备件可得性好，发动机运行及维护保养便利，成本低。  
Good availability of spare parts, smooth engine operation, convenient engine maintenance and low cost.

# 主要产品

NT

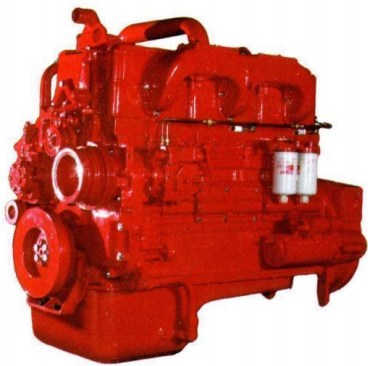
## 发动机规格 Engine Specifications

功率范围	Power Range	175-373kW
型式	Type	直列 / 六缸 / 四冲程 / 四气门 In-line/6-Cylinder/4-Stroke/4-Valve
缸径 × 冲程	Bore×Stroke	140×152mm
排量	Displacement	14L
外形尺寸	Dimension	长 × 宽 × 高 (L×W×H) 1592×790×1364 mm
净质量	Dry Weight	1280kg

- ★ 市场保有量大，机型实用，安全、稳定可靠，性价比高，是你值得信赖的动力。  
With large market population, engine types are useful, reliable and cost-effective, it is your dependable power.

## 推荐功率 Recommended Power

机型	功率 kW					
NT	175	209	268	298	336	373





主要产品

K19

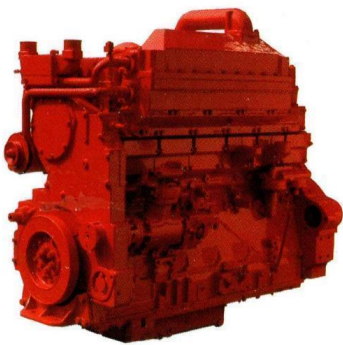
发动机规格 Engine Specifications

功率范围	Power Range	336-664kW
型式	Type	直列 / 六缸 / 四冲程 / 四气门 In-line/6-Cylinder/4-Stroke/4-Valve
缸径 × 冲程	Bore×Stroke	159×159mm
排量	Displacement	19L
外形尺寸	Dimension	长 × 宽 × 高 (L×W×H) 2142×1067×1733 mm
净质量	Dry Weight	1634kg

★ 经典机型，服务中国四十年，配件丰富，拥有广大忠诚的用户，性能卓越，安全可靠。  
Classical engine type with 40 years history in China, high market share with large loyal customers, excellent performance, safety and reliability.

推荐功率 Recommended Power

机型	功率 kW						
K19	336	392	448	507	522	560	664



主要产品

K38

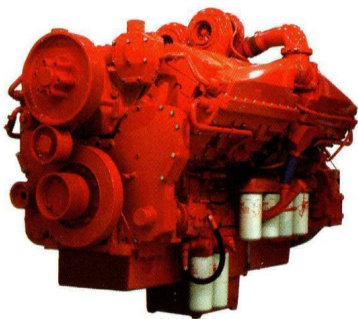
发动机规格 Engine Specifications

功率范围	Power Range	619-1119kW
型式	Type	V 型 /12 缸 / 四冲程 / 四气门 V-12 Cylinder,4-Stroke ,4-Valve
缸径 × 冲程	Bore×Stroke	159×159mm
排量	Displacement	38L
外形尺寸	Dimension	长 × 宽 × 高 (L×W×H) 2260×1339×2332 mm
净质量	Dry Weight	3723kg

★ 双凸轮轴系统，STC 分级液压正时，发动机运行更加平稳、可靠，与 K19 零件通用性高。  
Double camshaft system and STC Step Timing hydraulic control system make the engine even more steady and reliable. And the parts have high versatility with K19 engine.

推荐功率 Recommended Power

机型	功率 kW						
K38	619	783	895	970	1045	1119	





主要产品

K50

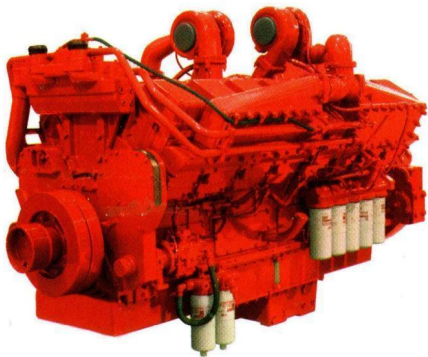
发动机规格 Engine Specifications

功率范围	Power Range	1096-1678kW
型式	Type	V 型 /16 缸 / 四冲程 / 四气门 V-16 Cylinder,4-Stroke ,4-Valve
缸径 × 冲程	Bore×Stroke	159×159mm
排量	Displacement	50L
外形尺寸	Dimension	长 × 宽 × 高 (L×W×H) 2857×1415×1766mm
净质量	Dry Weight	5561kg

★ 先进的低温中冷，强劲可靠，维修成本低，成就了康明斯大马力发动机的王者。  
With advanced low temperature after cooling system, robust & reliable power and low maintenance cost, they are make it as the prime engine type in Cummins HHP engine family.

推荐功率 Recommended Power

机型	功 率 kW					
K50	1096	1194	1227	1343	1491	1678



主要产品

QSN

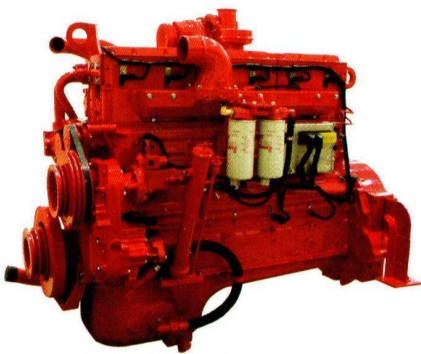
发动机规格 Engine Specifications

功率范围	Power Range	175-373kW
型式	Type	直列 / 六缸 / 四冲程 / 四气门 In-line/6-Cylinder/4-Stroke/4-Valve
缸径 × 冲程	Bore×Stroke	140×152mm
排量	Displacement	14L
外形尺寸	Dimension	长 × 宽 × 高 (L×W×H) 1592×1065×1364mm
净质量	Dry Weight	1280kg

★ 基于 NT 机型的各项优良品质，传承耐久皮实之秉性，采用康明斯先进技术，满足用户多变的需求。  
It is developed on the basis of the excellent quality of NT855 engine model, with the robust and durable characteristics, adopting the advanced Cummins technology, to satisfy various requirements of the customers .

推荐功率 Recommended Power

机型	功 率 kW					
QSN	175	257	268	298	336	373





主要产品

QSK19

发动机规格 Engine Specifications

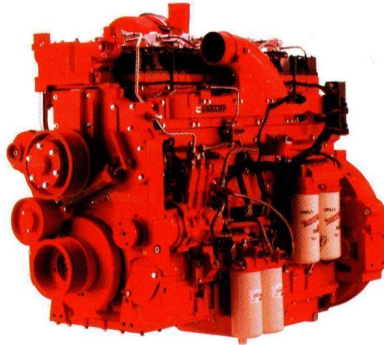
功率范围	Power Range	340-709kW
型式	Type	直列 / 六缸 / 四冲程 / 四气门 In-line/6-Cylinder/4-Stroke/4-Valve
缸径 × 冲程	Bore×Stroke	159×159mm
排量	Displacement	19L
外形尺寸	Dimension	长 × 宽 × 高 (L×W×H) 1695×985×1723mm
净质量	Dry Weight	1901kg

★ 先进的缸内燃烧技术，康明斯模块化高压共轨燃油系统，双高压防护（安全可靠），良好的高海拔和低温适应性，符合美国 EPA( III ) 排放标准。

Advanced in-cylinder combustion technology and Cummins high pressure modular common rail (MCRS ) system upgraded the engine adaptability in high altitude and low temperature region, meeting the EPA( III ) emission standards of USA.

推荐功率 Recommended Power

机型	功 率 kW						
QSK19	392	418	450	522	567	597	709



主要产品

QSK38

发动机规格 Engine Specifications

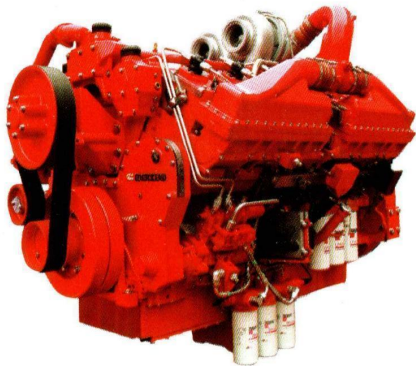
功率范围	Power Range	810-1193kW
型式	Type	V 型 /12 缸 / 四冲程 / 四气门 V-12 Cylinder,4-Stroke ,4-Valve
缸径 × 冲程	Bore×Stroke	159×159mm
排量	Displacement	38L
外形尺寸	Dimension	长 × 宽 × 高 (L×W×H) 2220×1507×1846mm
净质量	Dry Weight	3800kg

★ 全球领先的高压共轨（MCRS）及成熟 ECM 智能优化系统，安全有效地降低发动机排放和振动，为用户创造一个更加舒适和安全的工作环境。

The global leading high pressure modular common rail (MCRS) technology and ECM intelligent optimization system reduced the engine emission and vibration efficiently, creating a safer and more comfortable working environment.

推荐功率 Recommended Power

机型	功 率 kW						
QSK38	810	895	940	1007	1119	1141	1193





主要产品

QSK50

发动机规格 Engine Specifications

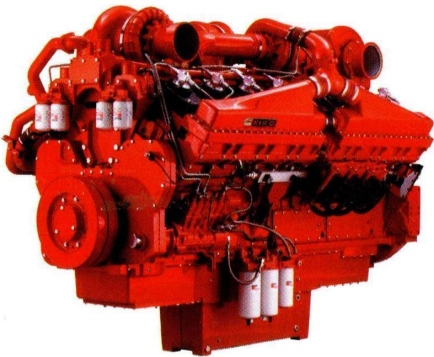
功率范围	Power Range	1007-1864kW
型式	Type	V 型 /16 缸 / 四冲程 / 四气门 V-16 Cylinder,4-Stroke ,4-Valve
缸径 × 冲程	Bore×Stroke	159×159mm
排量	Displacement	50L
外形尺寸	Dimension	长 × 宽 × 高 (L×W×H) 2794×1504×1897mm
净质量	Dry Weight	5970kg

★ 全球领先的高压共轨（MCRS）及成熟 ECM 智能优化系统，安全有效地降低发动机排放和振动，为用户创建一个更加舒适和安全的工作环境。

The global leading high pressure modular common rail (MCRS) technology and ECM intelligent optimization system reduced the engine emission and vibration efficiently, creating a safer and more comfortable working environment.

推荐功率 Recommended Power

机型	功 率 kW				
QSK50	1174	1328	1491	1678	1864

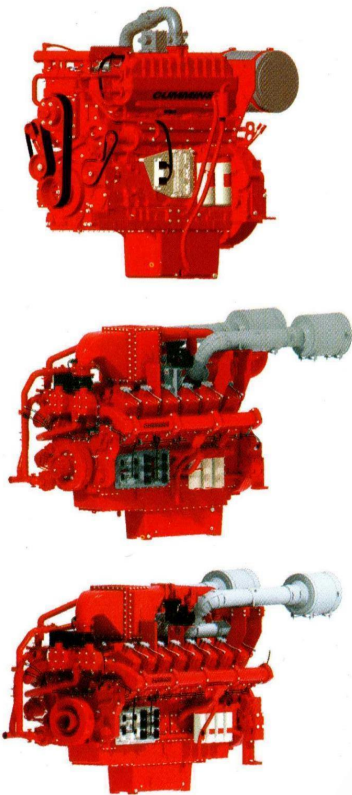


主要产品

燃气机 Gas Engine

	K19N	K38N	K50N
燃料类型	天然气/沼气/伴生气	天然气/沼气/伴生气	天然气/沼气/伴生气
NOx排放	500mg NOx	500mg NOx	500mg NOx
最大功率	500kW	900kW	1500kW
额定转速	1500/1800 rpm	1500/1800 rpm	1500/1800 rpm
机油消耗	<0.2g/kW.h	<0.2g/kW.h	<0.2g/kW.h
最大热效率	Max 38%	Max 42%	Max 42%
甲烷运行范围	>400BTU	>400BTU	>400BTU
环境温度	-40-45℃	-40-45℃	-40-45℃
最小保养服务间隔	1000小时	1000小时	1000小时
重量	约2100kg	约4000kg	约5800kg
长×宽×高	2060x1075x1910mm	2200x1650x2100mm	2700x1650x2100mm

\* 数据更改，恕不另行通知





## 典型应用 - 推土机 Bulldozer

## TYPICAL APPLICATION

重庆康明斯配套推土机的发动机功率范围 235-1000HP，满足国家相关排放法规要求。以其扭矩储备大、动力十足、皮实耐用的特点得到国内外客户的好评。同时，产品还经过高温、高海拔、极寒等严酷实验验证，是基建、矿山、沙漠治理、铺设油气管道等应用场景的“利器”。

The engines of Chongqing Cummins-equipped bulldozers range in power from 235-1000HP, complying with national emission regulations. They are praised by customers worldwide for their large torque reserve, robust power, and durability. The products have also undergone rigorous testing in harsh environments such as high temperatures, high altitudes, and extreme cold, making them ideal for infrastructure, mining, desert control, oil and gas pipeline laying, and other applications.



■ 数十台配套重庆康明斯发动机的推土机用于沙漠治理工程

Dozens of bulldozers equipped with CCEC engines are used in desert control project.

## 典型应用 - 泵机 Pump

## TYPICAL APPLICATION

重庆康明斯泵用发动机，功率范围 300HP-2220HP。主要用于配套应急消防、应急排涝、农业灌溉和液压驱动等设备，同时，重庆康明斯能够提供满足 NFPA20 成撬方案，部分泵用发动机还满足 UL 认证。

Chongqing Cummins pump engine, power range 300HP-2220HP. Mainly used for supporting equipment such as emergency firefighting, emergency drainage, agricultural irrigation, and hydraulic stations. At the same time, Chongqing Cummins can provide a modular solution that meets NFPA20, and some engines also meet UL certification.

■ 用于舟山石化基地的消防水泵。

Fire pump for Zhoushan Petrochemical Base



■ 用于海上风电设备安装的液压打桩锤  
Hydraulic pile hammer for offshore wind power equipment installation





## 典型应用 - 路面机械 Road machinery

## TYPICAL APPLICATION

重庆康明斯路面机械用发动机功率范围 360-800HP，广泛应用在铣刨机、冷再生机、摊铺机和稳定土拌合机等。发动机一流的可靠性、耐久性和燃油经济性，满足了路面设备在高寒或高温地区等极端恶劣气候下施工要求。产品同时满足国家规定排放要求，以其强劲的动力，为路面设备的性能提升与广泛应用开辟更加广阔的空间。

The engines for road machinery from Chongqing Cummins have a power range of 360-800HP, widely used in milling machines, cold recyclers, pavers, and soil stabilizers. With superior reliability, durability, and fuel economy, the engines meet the construction requirements of road equipment in extreme climates such as high-cold or high-temperature regions. They also comply with national emission standards, opening up broader prospects for enhancing the performance and widening the application of road equipment with their robust power.

■ 配套重康发动机的冷再生机正在路面施工

A cold recycler equipped with engine from CCEC is being used for road construction.



## 典型应用 - 轨道车 Rail

## TYPICAL APPLICATION

重庆康明斯轨道用发动机功率范围 290HP-2300HP，广泛应用在铁路轨道市场的打磨车、作业车、清筛车、捣固车、内燃机车等。发动机满足非道路国三及以上排放标准要求。

The CCEC railway engine has a power range of 290hp-2300hp and is widely used in the railway market for grinding, operation, cleaning, pounding cars, locomotives, etc. The engine meets the emission standards of non road National III and above.

■ 金鹰轨道车，采用 NT 发动机，功率 268kW

GEMAC rail car, equipped with NT engine, power 268kW



■ 中车新能源 1000kW 内电混合动力机车，采用 QSK19 发动机

CRRC New Energy 1000kw diesel electric hybrid locomotive equipped with QSK19 engine





## 典型应用 - 油气田 Oil & Gas

## TYPICAL APPLICATION

油气田市场配套的发动机，功率范围 280HP-2500HP，满足非道路国三排放法规要求。广泛用于钻井、混沙、固井、压裂和修井等设备。其优异的动力性、经济性、可靠性、耐久性和安全性受到用户的一致赞许。

The engine used in the oil & gas field market, with a power range of 280-2500hp, meets the requirements of non road National III and is widely used in equipment such as drilling rigs, sand mixers, cementing, fracturing, and workover rig. Its excellent power, economy, reliability, durability, and safety have received unanimous praise from customers.

### ■ QSK50 配套压裂撬

QSK50 matching fracturing pry



### ■ 配套 K50 发动机的压裂车在长庆油田现场

The fracturing truck equipped with K50 is on site in Changqing Oilfield



## 典型应用 - 矿用机械 Mining

## TYPICAL APPLICATION

矿用机械发动机，功率范围覆盖 330-2000HP，适应大型挖掘机，装载机，矿用车等各种矿山设备的动力需求。其强大的扭矩储备、充沛的动力输出和出色的耐用性而受到认可，是矿山开采、物料搬运、岩石破碎和矿物加工等关键应用的理想动力。

In the mining industry, CCEC offers a broad range of high horsepower 330-2000HP engines to fit for various mining product and applications. The strong performance, outstanding reliability and high torque make Cummins engines well recognized by the market, especially while operating in the toughest environment. The engine is well proven of their reliability and stability in these tough conditions, which also make it to be the best choice for the critical mining applications e.g., excavating, hauling, crushing and mineral handling, etc. CCEC power the mining industry with the green solutions!

### ■ QSK19 配套大型挖掘机

QSK19 application in large excavators



### ■ QSK19 配套 LW1200KN 装载机

QSK19 applied to LW1200KN loader





致力于成为

# 全球大马力发动机 技术研发及智能制造 新标杆

Committed to Becoming  
the New Benchmark of  
Global HHP Engine  
R&D and Intelligent  
Manufacturing



FOR  
A WORLD  
THAT'S  
ALWAYS ON™

