

# R&S® SMM100A VECTOR SIGNAL GENERATOR

Redefining midrange



Product Brochure  
Version 11.00

**ROHDE & SCHWARZ**

Make ideas real



# AT A GLANCE

State-of-the-art vector signal generators in the midrange are faced with strict requirements. The R&S®SMM100A provides users with a flexible option concept in combination with outstanding signal quality into the mmWave range as well as an excellent price/performance ratio. Discover the R&S®SMM100A, the only vector signal generator with mmWave testing capabilities in its class.

The R&S®SMM100A vector signal generator provides remarkably good RF characteristics across the entire frequency range from 100 kHz to 44 GHz. The instrument covers the bands up to 7.125 GHz used by the wireless standards for 5G NR FR1 and Wi-Fi 7 as well as the 5G NR FR2 bands up to 44 GHz.

The internal baseband generator in the R&S®SMM100A supports a maximum RF modulation bandwidth of 1 GHz. Digitally modulated broadband signals can thus be generated as required by the prevalent wireless standards. The R&S®SMM100A is well prepared for future bandwidth requirements.

Depending on the relevant test requirements, the R&S®SMM100A can be configured in particular for applications in production as well as for development work. It can be used as an economically attractive solution for playback of predefined waveforms with the arbitrary waveform generator (ARB). With the optional baseband generator, real-time capabilities are also available when required. Settings for complex signals are handled directly on the instrument – no external software is needed for signal generation.

Furthermore, the option concept of the R&S®SMM100A vector signal generator is very flexible. For example, digital baseband standards or upgrades of the RF modulation bandwidth can be easily activated at any time by entering a keycode, allowing the instrument to adapt to meet future requirements.



# KEY FACTS

- ▶ Frequency range from 100 kHz to 44 GHz
- ▶ High output power up to +18 dBm
- ▶ Internal RF modulation bandwidth up to 1 GHz
- ▶ Excellent modulation frequency response, error vector magnitude (EVM) and adjacent channel power ratio (ACPR)
- ▶ 5G NR signal generation up to 44 GHz
- ▶ Support for WLAN requirements for RF frequency, modulation bandwidth and performance
- ▶ Convenient operation via touchscreen and block diagram

# BENEFITS

Discover excellent signal performance

▶ [page 4](#)

Discover baseband capabilities

▶ [page 6](#)

Discover scalability

▶ [page 7](#)

Discover usability

▶ [page 8](#)

# APPLICATIONS

Mobile communications standards

▶ [page 10](#)

Ready for Wi-Fi 7 testing

▶ [page 11](#)

Envelope tracking

▶ [page 12](#)

High rate pulse (HRP) ultrawideband (UWB)

▶ [page 13](#)



# DISCOVER EXCELLENT SIGNAL PERFORMANCE

Verification of the performance of a device under test (DUT) requires the use of a signal generator with better signal quality than the DUT itself. Such performance is defined on one hand based on the SSB phase noise, the error vector magnitude (EVM) and the adjacent channel power ratio (ACPR). However, the amplitude and phase frequency response across the entire signal bandwidth is also an important criterion. The R&S®SMM100A excels in all of these areas.

## Excellent SSB phase noise and EVM performance with the R&S®SMM-B709 low phase noise option

For the R&S®SMM100A vector signal generator, SSB phase noise of  $< -129$  dBc is specified at an RF frequency of 1 GHz with a 20 kHz offset. The typical value of  $-134$  dBc is even 5 dB lower. Further improved SSB phase noise of  $-139$  dBc can be achieved with the R&S®SMM-B709 low phase noise option.

## Excellent EVM and ACPR/ACLR performance

The R&S®SMM100A also exhibits outstanding modulation characteristics. For example, the R&S®SMM100A delivers impressive EVM performance of  $< -58$  dB (0.1%) at an RF frequency of 3.5 GHz for a 100 MHz 5G NR signal in line with 3GPP test model (TM) 3.1.

During development of the R&S®SMM100A, special attention was paid to minimizing unwanted distortion in order to achieve the best possible adjacent channel power ratio (ACPR). A 10 MHz LTE test signal in line with 3GPP TM 1.1 achieves ACLR performance in the adjacent channel of  $-69$  dBc.

## Improved performance at higher output power with the R&S®SMM-K575 RF linearization option

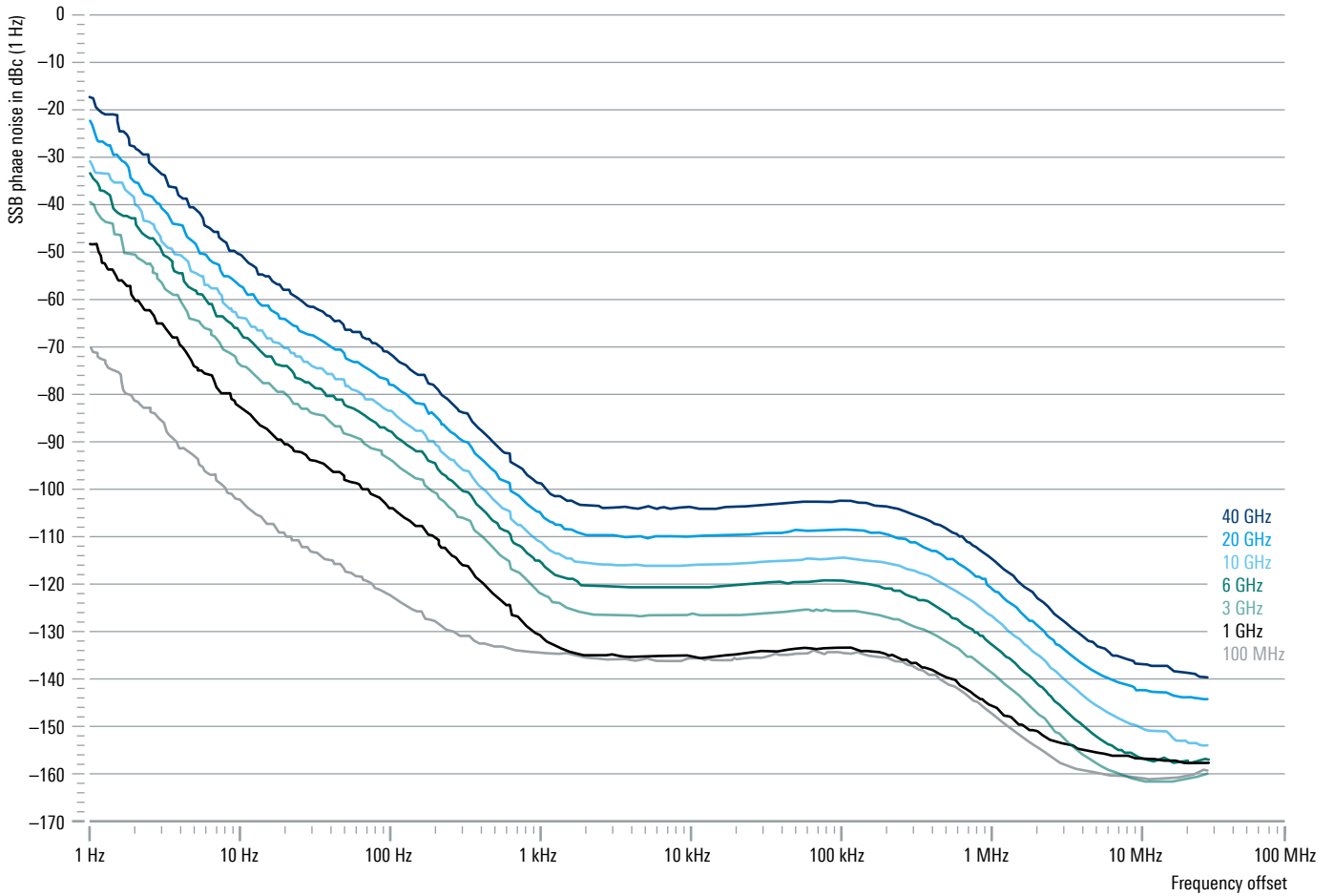
Activating the R&S®SMM-K575 RF linearization option significantly improves the EVM performance at higher output power. For a 100 MHz 5G NR signal in line with 3GPP TM3.1 at 3.5 GHz and an output power of 10 dBm, the EVM performance is improved by 8 dB. The same is valid for ACLR performance in the adjacent channel.

## Extremely flat frequency response

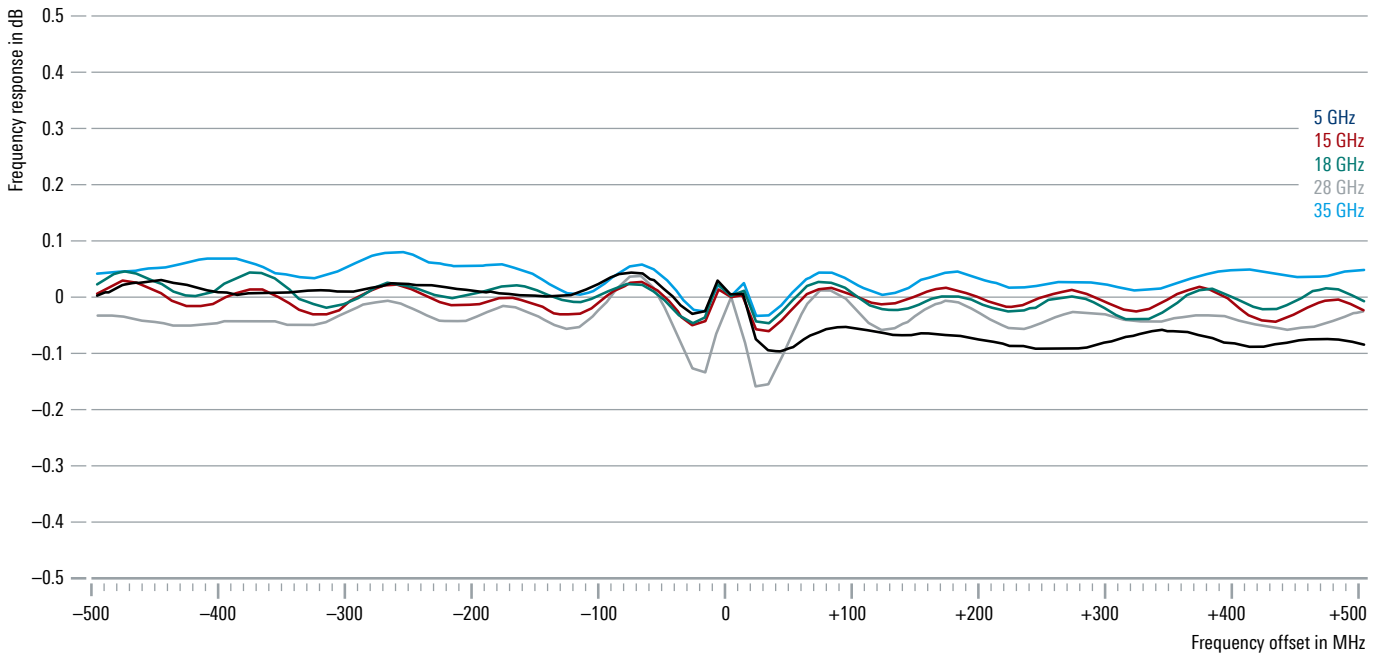
Especially with single-carrier signals, the frequency response of the signal within the modulation bandwidth also has a major influence on the achievable EVM performance. It is thus essential to minimize this parameter in magnitude and phase across the entire RF frequency range of the generator.

Intelligent compensation is provided for internal influences of the R&S®SMM100A on the frequency response. The R&S®SMM100A thus attains a measured magnitude frequency response of  $< 0.4$  dB over the entire RF modulation bandwidth of 1 GHz.

### Measured SSB phase noise performance, CW mode



### Measured I/Q modulation frequency response with internal baseband generator



# DISCOVER BASEBAND CAPABILITIES

## Internal real-time signal generation

The internal baseband of the R&S®SMM100A offers impressive real-time capabilities. Users can configure and generate standard-compliant signals for all major digital communications standards right on the instrument, including 5G NR, LTE, WLAN and many others. No external signal generation software is needed. The well-arranged configuration menus simplify operation of the instrument and help to speed up measurement tasks.

## Arbitrary waveform generator

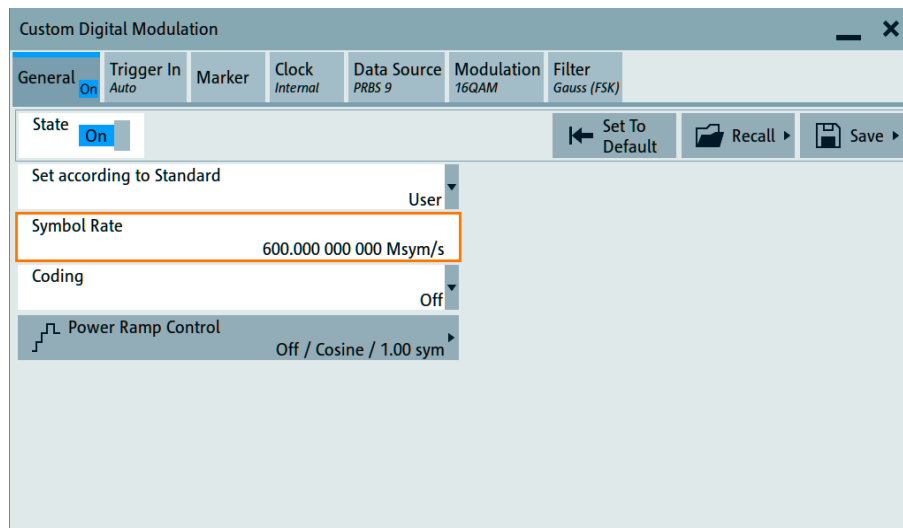
The arbitrary waveform generator is especially suitable for applications in production. Waveforms generated with the R&S®WinIQSIM2 simulation software can be loaded and played back. User-specific waveforms are also supported. The R&S®SMM100A is impressive with its large memory depth of up to 2 Gsample and maximum sampling rate of 1.2 Gsample/s.

Multi-segment mode is another ARB function that considerably speeds up test sequences by allowing fast switching between individual baseband signals.

## Custom digital modulation

The R&S®SMM100A also makes it easy to generate custom digitally modulated signals with predefined modulation types and a symbol rate of up to 600 Msymbol/s. Besides standard pseudo noise (PN) data, user-specific data lists can also be loaded and a variety of configurable filters can be applied. Preconfigured settings are also available for various digital standards such as GSM and Bluetooth®.

### Custom digital modulation



# DISCOVER SCALABILITY

## Frequency options

The R&S®SMM100A is available with various frequency options up to a maximum frequency of 44 GHz. This allows users to precisely configure the R&S®SMM100A to meet their actual test requirements. For example, signals can be generated in the 5G NR frequency ranges FR1 and FR3 up to 24.25 GHz and FR2 up to 44 GHz. With the 7.5 GHz option, however, the relevant frequency range for Wi-Fi 7 can also be precisely covered.

## Keycode extendable bandwidth and ARB memory

In the basic configuration, the R&S®SMM100A supports a maximum RF modulation bandwidth of 120 MHz. Depending on the requirements, this can be extended up to 1 GHz by installing a license key. With similar flexibility, the ARB memory depth can be extended from 64 Msample up to a maximum of 2 Gsample.

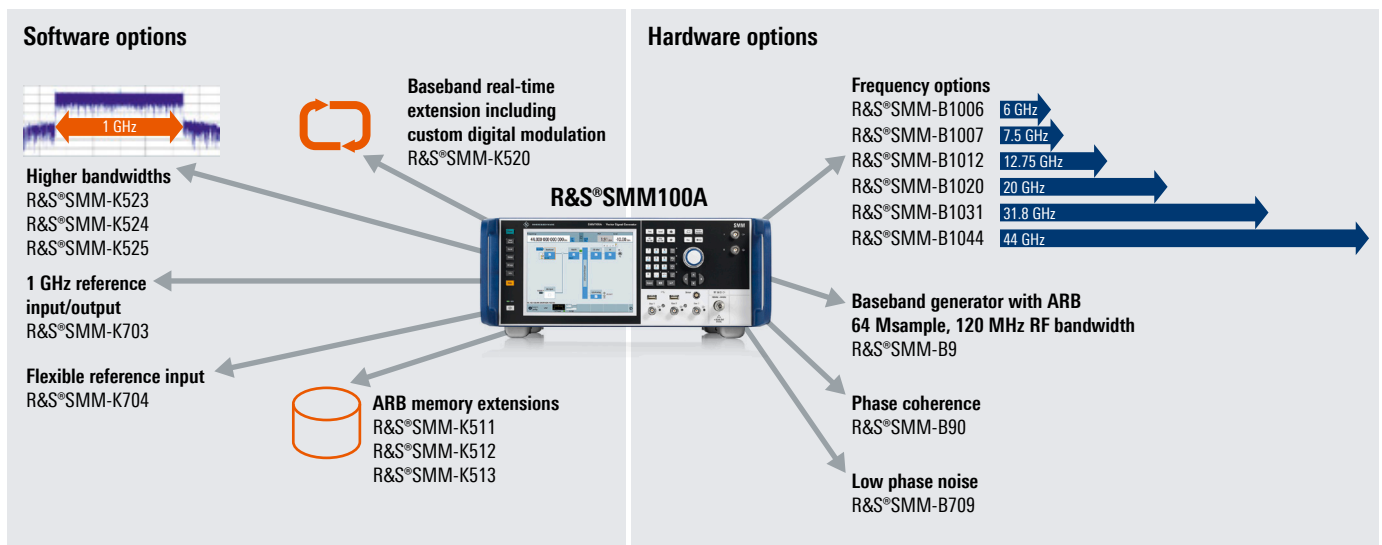
## Timed licenses and waveform packs

In addition to permanent software licenses, time-limited licenses are available for three, six or twelve months in order to support smaller projects in a cost-efficient manner. In cases where only a few test signals are needed from various standards, the waveform packages available in different sizes are the right choice. Once registered, the waves can be used as often as necessary with no time limitation.

## Floating licenses

In production environments, many test procedures might run in parallel but not always at the same time. Measurement options that are tied to specific instruments go unused to some extent. The license server provides a solution to this problem. All available licenses are stored in a central location on a server. The different instruments simply access the license pool when necessary. This helps reduce the number of necessary licenses while simultaneously cutting costs.

## Overview of important software and hardware options



# DISCOVER USABILITY

## Structured and intuitive user interface

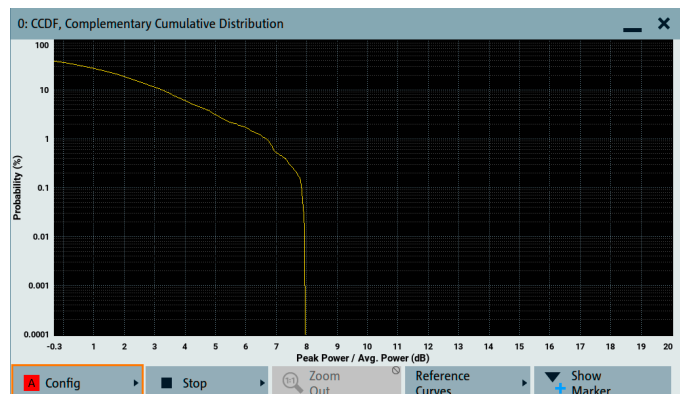
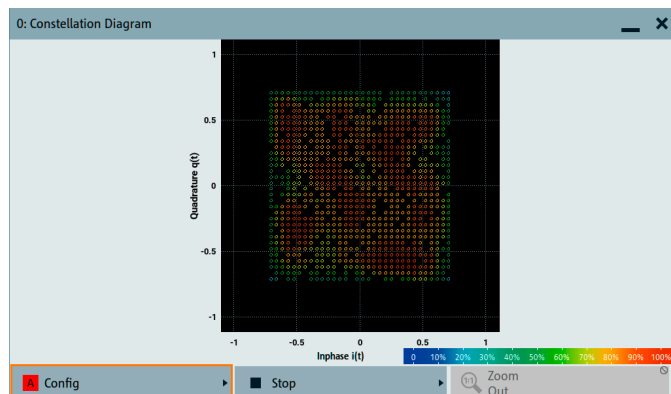
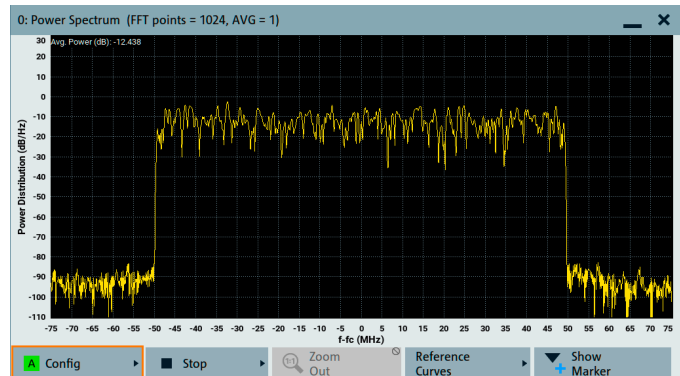
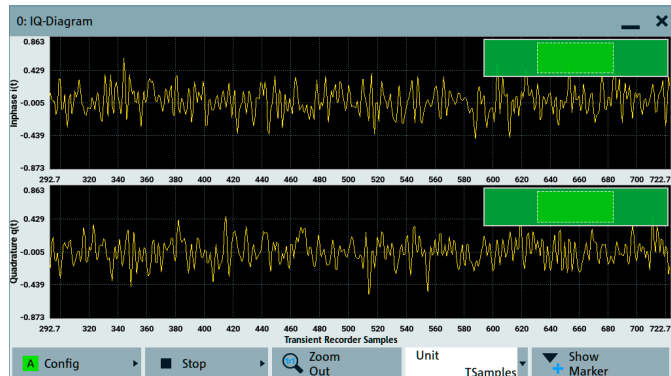
Instrument setups can be configured via a 8.4" touch-screen. The logically structured user interface is presented in the form of a block diagram. The configuration blocks begin with the baseband generator and are followed by the additive white Gaussian noise (AWGN) block, the I/Q modulator and the RF block for signal output. The block diagram represents the signal flow while simultaneously helping the user to intuitively work through the configuration menus.

The built-in graphical analysis function allows verification of the configured baseband signal at different points within the overall signal flow path. Signals can be displayed in real time either in the time domain or as a spectrum. Additional analysis functions are available for the baseband signal.

## Division of the user interface into configuration blocks



## Graphical signal monitoring in real time



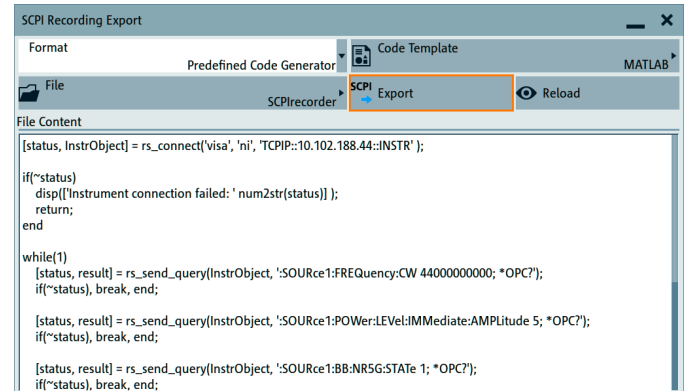
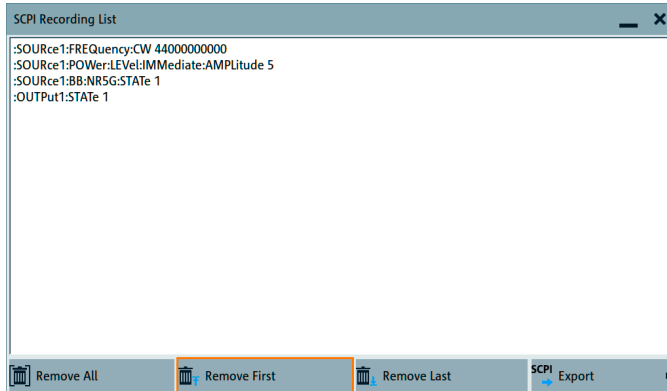


## Automation made easy with context-sensitive help system and SCPI recording

Context-sensitive online help offers comprehensive information. It describes each parameter and setup menu in detail, states the setting range and shows the associated remote control commands. Moreover, users can search for specific parameters in the user manual installed on the instrument.

The R&S®SMM100A helps users quickly and correctly create remote control programs. The instrument's built-in SCPI macro recorder with code generator can automatically record all manual settings and create an executable MATLAB® or Python script. They can be reused with other Rohde&Schwarz vector signal generators due to code compatibility. The R&S®SMM100A therefore helps minimize the time required for test automation, saving development resources.

The built-in SCPI macro recorder and code generator support fast, easy generation of SCPI sequences

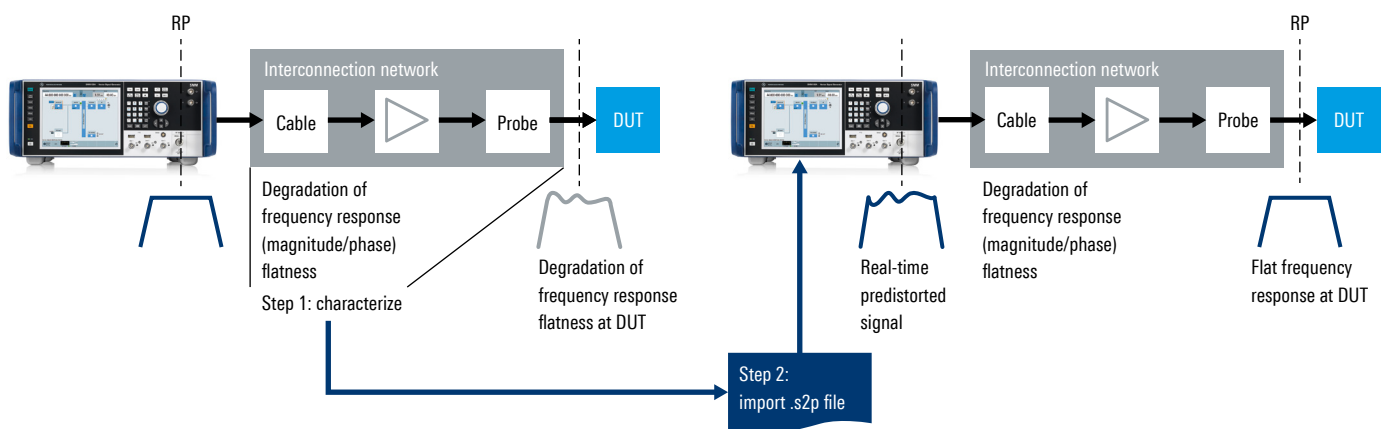


## R&S®SMM-K544 frequency response correction

Various RF components such as cables, adapters, amplifiers and antennas are used to connect the signal generator to the DUT. Of course, all of these components influence the RF signal provided by the R&S®SMM100A. The R&S®SMM-K544 frequency response correction option

can be used to automatically compensate for this effect. The frequency response for the components that are used is saved in .s2p files, which can be individually selected as required. The reference plane of the test signal is thus shifted from the RF connector of the R&S®SMM100A to the DUT input.

### Principle of user-defined frequency response correction with R&S®SMM-K544 option

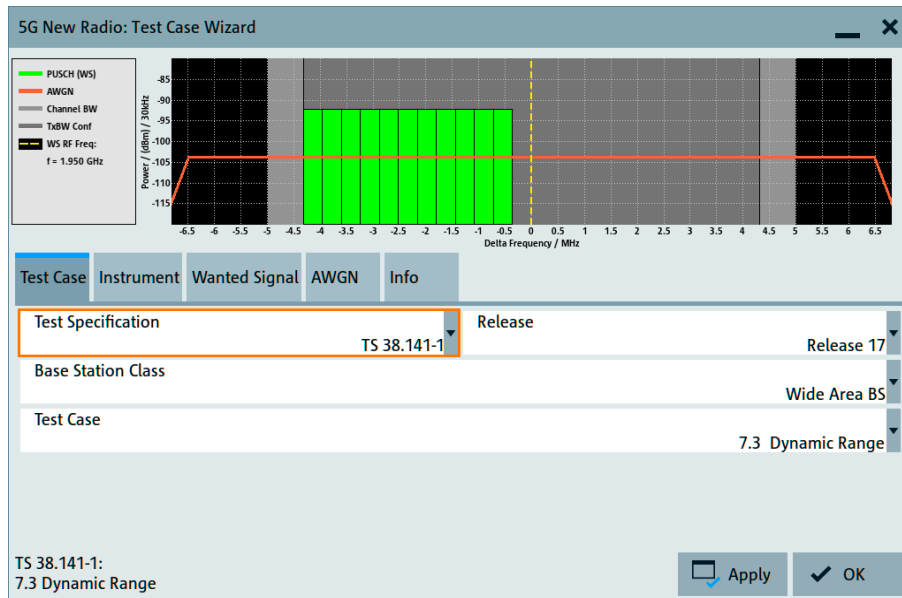


# MOBILE COMMUNICATIONS STANDARDS

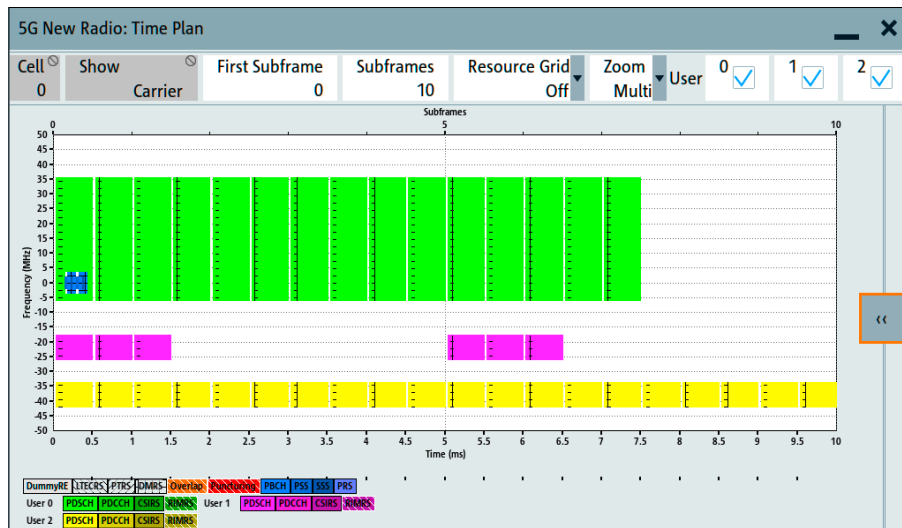
Using a wide range of available signal generation options, the R&S®SMM100A can produce test signals in compliance with the most important wireless communications standards. The instrument is especially well suited for generation of standard-compliant 5G NR signals up to Release 18. When equipped with the R&S®SMM-B1044 frequency option, the instrument covers all frequency ranges for 5G NR up to 44 GHz. Together with the R&S®SMM-K525 bandwidth extension to 1 GHz, the instrument can handle the increased requirements for signal bandwidth in 5G applications (especially in frequency range FR2 and with carrier aggregation). With its

outstanding signal quality, the R&S®SMM100A is the perfect signal generator for 5G NR base station conformance testing in all frequency ranges – conducted and OTA.

Users benefit from the predefined test models and fixed reference channels (FRC). A test case wizard simplifies configuration of the instrument for 3GPP-compliant 5G NR and LTE BTS conformance tests. Once the user has selected the desired conformance test case, the wizard automatically handles configuration of all signal parameters and other R&S®SMM100A settings.



The 5G NR test case wizard allows the R&S®SMM100A to be conveniently and cleverly configured for BTS tests in line with 3GPP TS.38.141



Time plan display in the 5G NR option of the R&S®SMM100A

# READY FOR Wi-Fi 7 TESTING

The preceding WLAN standards IEEE 802.11ac and IEEE 802.11ax use a maximum signal bandwidth of 160 MHz. However, WLAN is also following the trend toward larger bandwidths and higher frequencies. For IEEE 802.11be, also known as Wi-Fi 7, a signal bandwidth of 320 MHz is specified in the frequency range from 5.8 GHz to 7.125 GHz.

With EVM of better than  $-53$  dB for a signal bandwidth of 320 MHz, the R&S®SMM100A satisfies the relevant requirements for signal quality. In combination with the R&S®SMM-B1007 frequency option up to 7.5 GHz and the R&S®SMM-K524 bandwidth extension to 500 MHz, the R&S®SMM100A is the ideal signal generator for WLAN testing of components, modules and devices.

EVM measurement of an IEEE 802.11be signal with 320 MHz signal bandwidth



# ENVELOPE TRACKING

An increasing number of power amplifiers support envelope tracking (ET) in order to reduce power consumption and improve efficiency, for example in smartphones and tactical radios. Typical test setups for measuring power amplifiers comprise at least one signal generator and one spectrum analyzer. Envelope tracking requires an additional generator to deliver the envelope signal for the DC modulator.

## RF and envelope signal out of one box

Equipped with the R&S®SMM-K540 envelope tracking option, the R&S®SMM100A generates both the RF signal and the corresponding envelope signal. The envelope signal is generated from the baseband signal in real time. This means that any user-specific I/Q signals and any supported wireless communications signals, such as 5G NR or LTE, can be used.

Generating the RF signal and the envelope signal in a single instrument makes it possible to precisely adjust the delay between the two signals.

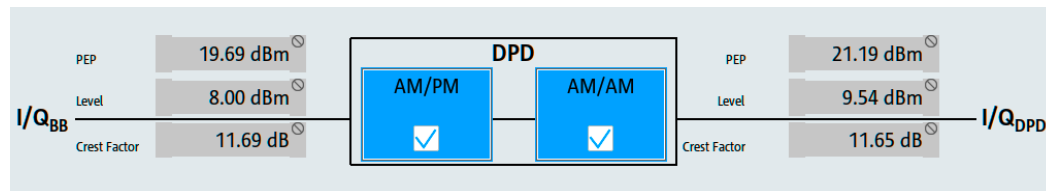
The R&S®SMM100A adjusts the delay in picosecond steps in real time, meeting tight requirements, for example accuracy better than 1 ns for a 20 MHz LTE signal.

The envelope signal is shaped to optimize the power amplifier for efficiency or linearity. The R&S®SMM100A offers various shaping methods, such as look-up table and polynomial, which are applied in real time. For power sweeps, the R&S®SMM100A automatically calculates the amplitude of the envelope signal, eliminating time-consuming manual calculations. It is also possible to adjust additional parameters, such as the gain and impedance of the DC modulator.

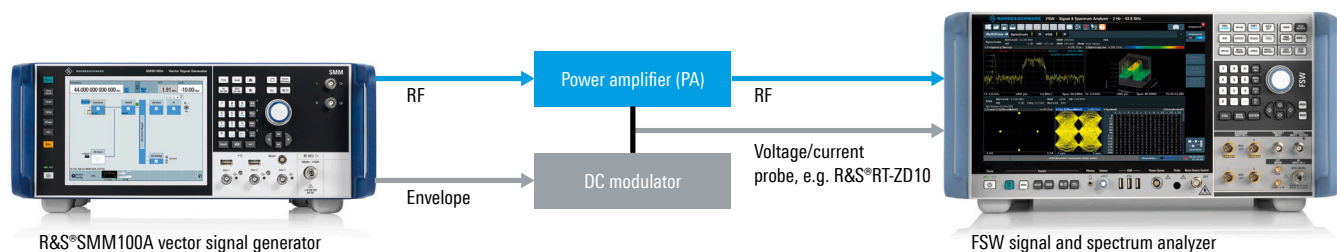
## Real-time digital predistortion

With envelope tracking, the amplifier is operated close to or even in saturation, causing distortion at the amplifier output. To compensate for this effect, envelope tracking is often used in combination with digital predistortion (DPD). Equipped with the R&S®SMM-K541 digital predistortion option, the R&S®SMM100A can apply real-time amplitude and phase correction to each complex I/Q sample using the values in the DPD tables. As a result, users can quickly verify the effect of predistortion, even for different power levels, without having to manually calculate the original waveform.

Digital predistortion user interface with the R&S®SMM-K541 option



## Compact Rohde & Schwarz setup for power amplifier tests including envelope tracking



# HIGH RATE PULSE (HRP) ULTRAWIDEBAND (UWB)

Due to the ability to determine distances with extremely high precision, HRP UWB is becoming increasingly important in many applications. In mobile devices, this information is used for hands-free access, mobile payments or asset finding, for example. In automotive applications, keyless entry systems that determine the distance between the key and the vehicle are also well established.

Based on amendment IEEE 802.15.4z to the IEEE 802.15.4 standard, new coding and preamble options as well as higher symbol rates for existing modulation types have been introduced for HRP UWB PHY in order to increase the accuracy of distance determination and improve the integrity of the measurement.

The R&S®SMM100A is ideally suited for HRP UWB receiver testing. With the R&S®SMM-B1012 frequency option up to 12.75 GHz, the R&S®SMM100A covers the frequency range used by HRP UWB up to 10.6 GHz. Together with the R&S®SMM-K524 baseband extension option to 500 MHz RF bandwidth, signals can be generated on the most important channels with a signal bandwidth of up to 500 MHz.

The R&S®SMM-K149 HRP UWB baseband option supports signal generation for the three specified modes: HRP UWB from IEEE 802.15.4 as well as the base pulse repetition frequency (BPRF) mode and the high pulse repetition frequency (HPRF) mode for enhanced ranging devices (ERDEF) from IEEE 802.15.4z.

For use in testing receivers, flexible configuration of the HRP UWB frame is supported. Depending on the requirements, the channel number, idle time, synchronization header (SHR), physical header (PHR), physical service data unit (PSDU) and scrambled timestamp sequence (STS) for time of flight measurements can all be individually configured. In addition, impairments due to symbol timing error and frequency offset can be simulated.

HRP UWB signal generation (R&S®SMM-K149 option)

The screenshot displays the configuration window for IEEE 802.15.4. The 'Frame Configuration' tab is active, showing a frame structure with SYNC, SFD, PHR, Payload, and STS fields. Below this, the 'Physical Data' section is visible, with the 'MAC FCS' checkbox highlighted by an orange border. Other settings include Data Source (PN9), Viterbi Rate (0.5), Convolutional Code Constraint Length (CL3), MAC Header (Off), Data Rate (6.810 MBit/s), Mean PRF (124.8 MHz), and PHR Data Rate Mode (DRHM\_LR).

Field	Value
Data Source (LSB is Transmitted First)	PN9
Viterbi Rate	0.5
Convolutional Code Constraint Length	CL3
MAC FCS	<input type="checkbox"/>
MAC Header	Off
Data Rate	6.810 MBit/s
Mean PRF	124.8 MHz
PHR Data Rate Mode	DRHM_LR

# STATE-OF-THE-ART USER INTERFACE

## High-resolution touchscreen

With easy-to-use graphical user interface and block diagram

## Context-sensitive help system

## Signal monitoring with graphical result display

For practically every point in the signal flow



### Favorite key

For simplified and fast operation via customizable user menu



### Connector

For an R&S®NRP power sensor

### RF output connector

1.85 mm male<sup>1)</sup>

### User-configurable connectors

E.g. trigger, marker, clock

<sup>1)</sup> Depending on frequency option.

# REAR PANEL CONNECTIONS

Removable solid-state drive (SSD)

Flexible reference input/output from 1 MHz to 100 MHz

R&S®SMM-K704 option

1 GHz reference input/output

R&S®SMM-K703 option

LO in/out for phase coherence application

R&S®SMM-B90 option

Remote control via GPIB





Remote control via USB or LAN



Single-ended and differential analog I/Q outputs  
R&S®SMM-K17 option

Input for external pulse modulation signal  
R&S®SMM-K22 option

# SPECIFICATIONS IN BRIEF

Specifications in brief		
<b>Frequency</b>		
Frequency range	with R&S®SMM-B1006 option	100 kHz to 6 GHz
	with R&S®SMM-B1007 option	100 kHz to 7.5 GHz
	with R&S®SMM-B1012 option	100 kHz to 12.75 GHz
	with R&S®SMM-B1020 option	100 kHz to 20 GHz
	with R&S®SMM-B1031 option	100 kHz to 31.8 GHz
	with R&S®SMM-B1044/-B1044N/-B1044O options	100 kHz to 44 GHz
<b>Level</b>		
Specified level range	peak envelope power (PEP)	
	100 kHz ≤ f < 1 MHz	-120 dBm to +3 dBm
	1 MHz ≤ f ≤ 3 MHz	-120 dBm to +8 dBm
	with R&S®SMM-B1006/-B1007/-B1012/-B1020 options	
	3 MHz < f ≤ 20 GHz	-120 dBm to +18 dBm
	with R&S®SMM-B1031/-B1044/-B1044N/-B1044O options	
	3 MHz < f ≤ 3 GHz	-120 dBm to +18 dBm
	3 GHz < f ≤ 14 GHz	-120 dBm to +17 dBm
	14 GHz < f ≤ 20 GHz	
	CW, I/Q modulation, signal bandwidth ≤ 160 MHz	-120 dBm to +15 dBm
	I/Q modulation, signal bandwidth > 160 MHz	-120 dBm to +12 dBm
	20 GHz < f ≤ 29 GHz	-120 dBm to +18 dBm
	29 GHz < f ≤ 33 GHz	-120 dBm to +17 dBm
	33 GHz < f ≤ 40 GHz	-120 dBm to +15 dBm
	40 GHz < f ≤ 42 GHz	-120 dBm to +13 dBm
	42 GHz < f ≤ 44 GHz	-120 dBm to +11 dBm
<b>Spectral purity</b>		
Harmonics	CW, f > 1 MHz	
	with R&S®SMM-B1006 option, level < 10 dBm	< -30 dBc
	with R&S®SMM-B1007/-B1012 options, level < 8 dBm	< -30 dBc
	with R&S®SMM-B1020/-B1031/-B1044/-B1044N/-B1044O options, level < 10 dBm	
	f ≤ 3.5 GHz	< -30 dBc
	f > 3.5 GHz	< -55 dBc
Nonharmonics	CW, I/Q modulation (external wideband I/Q, full-scale DC input), level > -10 dBm, > 10 kHz offset from carrier	
	100 kHz ≤ f ≤ 1.5 GHz	< -80 dBc
	1.5 GHz < f ≤ 3 GHz	< -79 dBc
	3 GHz < f ≤ 6 GHz	< -73 dBc
	6 GHz < f ≤ 12 GHz	< -67 dBc
	12 GHz < f ≤ 24 GHz	< -61 dBc
	24 GHz < f ≤ 44 GHz	< -55 dBc
SSB phase noise	CW, carrier offset = 10 kHz, f = 1 GHz	
	standard	< -129 dBc
	with R&S®SMM-B709 option	< -139 dBc
	CW, carrier offset = 10 kHz, f = 10 GHz	
	standard	< -109 dBc
	with R&S®SMM-B709 option	< -119 dBc
<b>Analog modulation</b>		
Supported analog modulation modes	with R&S®SMM-K720 option	AM, FM, PM
	with R&S®SMM-K22 option	pulse modulation

## Specifications in brief

### I/Q modulation

RF modulation bandwidth	with internal baseband I/Q, I/Q wideband on; with R&S®SMM-B1006/-B1007/-B1012/-B1020/-B1031/-B1044 options	
	1 MHz ≤ f ≤ 300 MHz	±32% of carrier frequency
	300 MHz < f ≤ 1.25 GHz	±40% of carrier frequency
	f > 1.25 GHz	±500 MHz
	with internal baseband I/Q, I/Q wideband on; with R&S®SMM-B1044N option	
	1 MHz ≤ f ≤ 300 MHz	±32% of carrier frequency
	300 MHz < f ≤ 1.25 GHz	±40% of carrier frequency
	1.25 GHz < f ≤ 20 GHz	±500 MHz
	f > 20 GHz	±275 MHz
	with internal baseband I/Q, I/Q wideband on; with R&S®SMM-B1044O option	
	1 MHz ≤ f ≤ 300 MHz	±32% of carrier frequency
	300 MHz < f ≤ 1.25 GHz	±40% of carrier frequency
	1.25 GHz < f ≤ 31.75 GHz	±500 MHz
	31.75 GHz < f ≤ 37.05 GHz	±225 MHz
	f > 37.05 GHz	±500 MHz
Modulation frequency response in specified RF modulation bandwidth	with internal baseband, I/Q wideband on	< 1.0 dB, < 0.4 dB (meas.)

### I/Q baseband generator

Signal bandwidth	standard	120 MHz
	with R&S®SMM-K523 option	240 MHz
	with R&S®SMM-K523/-K524 options	500 MHz
	with R&S®SMM-K523/-K524/-K525 options	1000 MHz
ARB memory depth	standard	64 Msample
	with R&S®SMM-K511 option	512 Msample
	with R&S®SMM-K511/-K512 options	1 Gsample
	with R&S®SMM-K511/-K512/-K513 options	2 Gsample

### Digital standards

Supported standards and modulation systems	5G NR, OFDM signal generation, cellular IoT, LTE, 3GPP FDD/HSPA/HSPA+, GSM/EDGE/EDGE Evolution, CDMA2000, 1xEV-DO Rev. A/B, WLAN IEEE 802.11a/b/g/n/l/p/ac/ax/be, HRP UWB, AWGN and more
--	--

Service at Rohde & Schwarz

## YOU'RE IN GREAT HANDS

	SERVICE PLANS	ON DEMAND
Calibration	Up to five years <sup>1)</sup>	Pay per calibration
Warranty and repair	Up to five years <sup>1)</sup>	Standard price repair

<sup>1)</sup> For extended periods, contact your Rohde & Schwarz sales office.

### Instrument management made easy

The R&S®InstrumentManager makes it easy to register and manage your instruments. It lets you schedule calibration dates and book services.

Find out more about our service portfolio under:



The Bluetooth® word mark and logos are registered trademarks owned by Bluetooth SIG, Inc. and any use of such marks by Rohde & Schwarz is under license. NFC Forum and the NFC Forum logo are trademarks of the Near Field Communication Forum™. Wi-Fi is a registered trademark of Wi-Fi Alliance.

## Service at Rohde & Schwarz You're in great hands

- ▶ Worldwide
- ▶ Local and personalized
- ▶ Customized and flexible
- ▶ Uncompromising quality
- ▶ Long-term dependability

## Rohde & Schwarz

The Rohde&Schwarz technology group is among the trailblazers when it comes to paving the way for a safer and connected world with its leading solutions in test&measurement, technology systems and networks&cybersecurity. Founded 90 years ago, the group is a reliable partner for industry and government customers around the globe. The independent company is headquartered in Munich, Germany and has an extensive sales and service network with locations in more than 70 countries.

[www.rohde-schwarz.com](http://www.rohde-schwarz.com)

## Sustainable product design

- ▶ Environmental compatibility and eco-footprint
- ▶ Energy efficiency and low emissions
- ▶ Longevity and optimized total cost of ownership

Certified Quality Management

**ISO 9001**

Certified Environmental Management

**ISO 14001**

## Rohde & Schwarz training

[www.training.rohde-schwarz.com](http://www.training.rohde-schwarz.com)

## Rohde & Schwarz customer support

[www.rohde-schwarz.com/support](http://www.rohde-schwarz.com/support)

