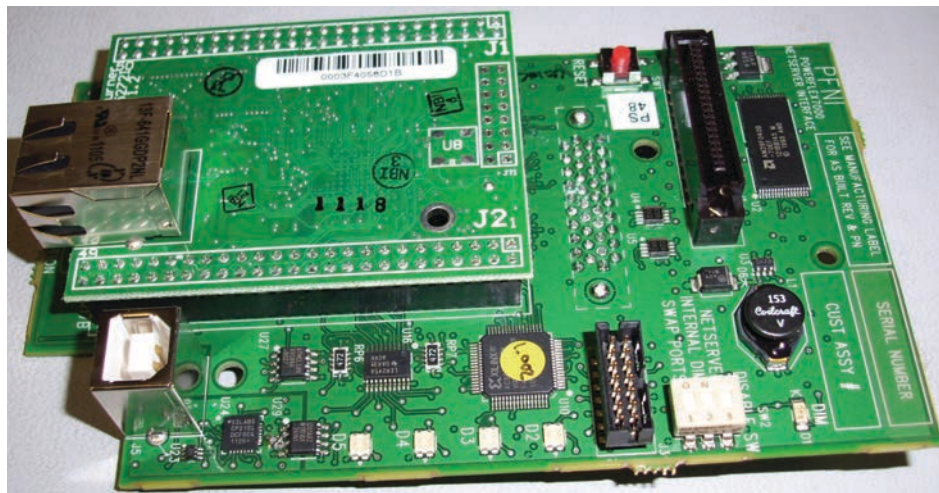


HMI Interface Board Software Updater and Firmware Download Procedure

Bulletin 7000



Topic	Page
Additional Resources	2
Introduction	3
Download PowerFlex 7000 Software Updater	3
Computer Configuration	6
Point-to-Point Connection (not connected on a network)	6
Connect to a Network Without a DHCP Server	8
Connect to a Network With a DHCP Server	10
Download System Firmware to the HMI Interface Board	12
Select a Drive for System Firmware Download	12
Update Selected Drive	13
Troubleshooting	15



Additional Resources

These documents contain additional information concerning related products from Rockwell Automation.

Resource	Description
Industrial Automation Wiring and Grounding Guidelines, publication 1770-4.1	Provides general guidelines for installing a Rockwell Automation industrial system.
Product Certifications website, http://www.ab.com	Provides declarations of conformity, certificates, and other certification details.

You can view or download publications at <http://www.rockwellautomation.com/literature/>. To order paper copies of technical documentation, contact your local Allen-Bradley distributor or Rockwell Automation sales representative.

Introduction

The procedure is only applicable to PowerFlex® 7000 ForGe Drives which utilize the new HMI Interface Board (Part No. 80190-780-01-R).

The HMI Interface Board Software Updater and Firmware Download Procedure is necessary when:

- Retrofitting existing PowerFlex 7000 ForGe Drive with the new HMI Interface Board, and/or
- Updating PowerFlex 7000 ForGe Drive Firmware and HMI Interface Board Firmware simultaneously with the most recent firmware versions.

IMPORTANT System firmware refers to PowerFlex 7000 ForGe Drive Firmware, the HMI Interface Board Firmware and the SD card generic content.

When replacing an existing HMI Interface Board, the existing SD card must be placed into the new HMI Interface Board. An existing SD card contains all the job specific documentation (e.g. user manuals, customer drawings, etc.).

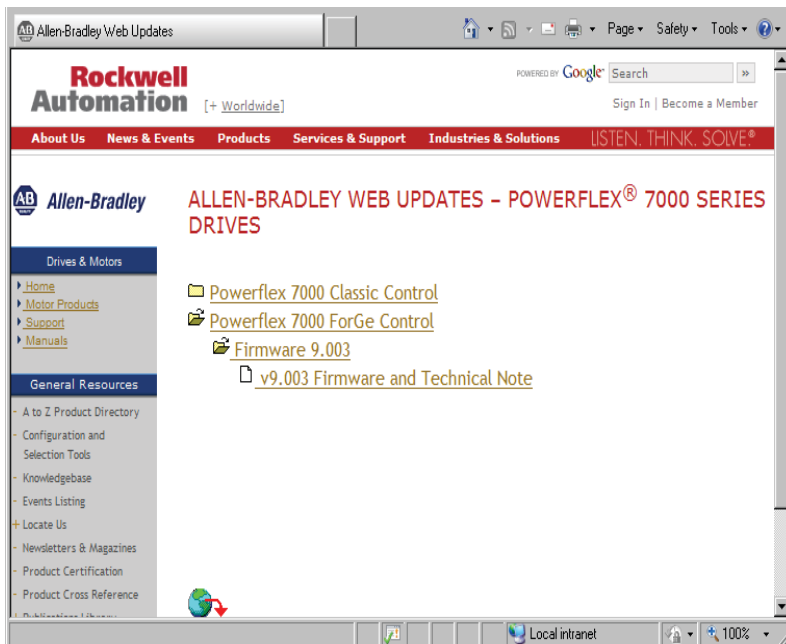
The updater utility does not update this documentation.

Download PowerFlex 7000 Software Updater

Prior to attempting the firmware download, the PowerFlex 7000 Software Updater Utility and associated packages must be downloaded onto the local hard drive of your computer. This utility allows you to download system firmware.

1. Enter the following website to access the Allen-Bradley updates page.

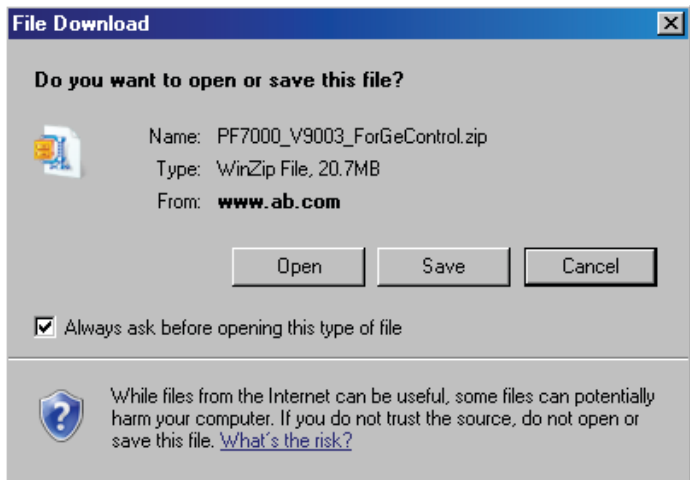
www.ab.com/support/abdrives/webupdate/powerflex7000.html



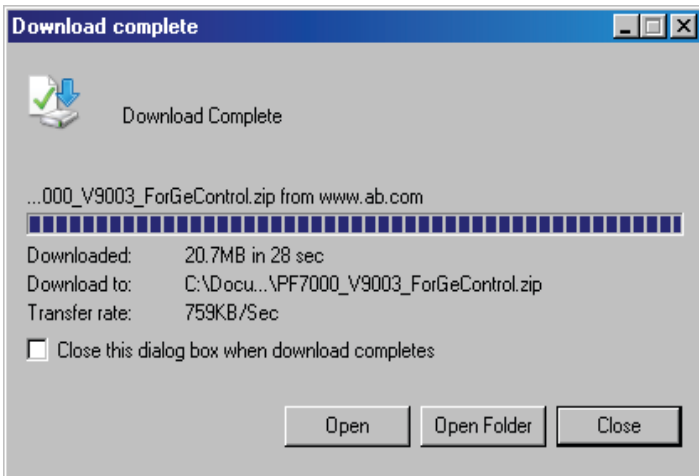
2. Click PowerFlex 7000 ForGe Control>Firmware 9.00_>v9.00_ Firmware and Technical Note.

IMPORTANT The version number changes with every firmware release.

3. Click Save and select Desktop as the destination in the File Download dialog.

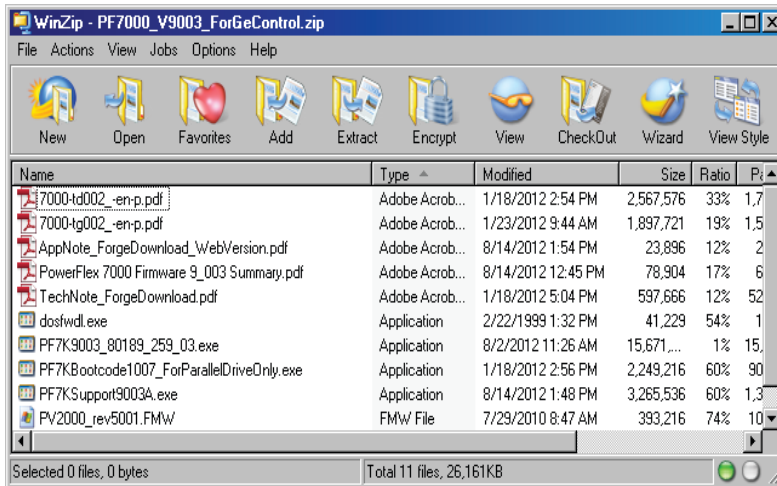


4. Click Open in the Download complete dialog.

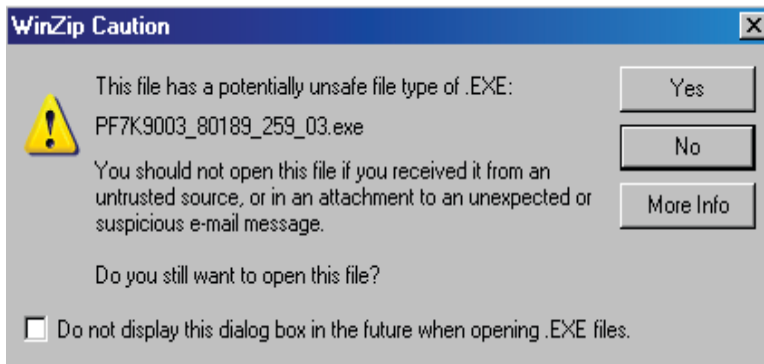


- Double-click on PF7K9003_80189_259_03.exe.

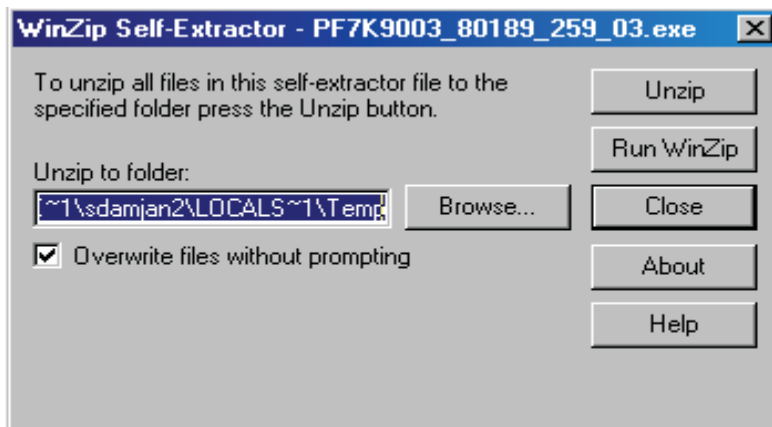
IMPORTANT The file name changes as new firmware revisions become available.



- Click Yes to unzip PF7K9003_80189_259_03.exe.



- Click Browse to select the desired location on the local hard drive to unzip the PF7K9003_80189_259_03.exe (e.g. Desktop).



- Click Unzip to extract the file to the selected location.

Computer Configuration

Determine whether the respective HMI Interface Board(s) are not connected to a network, or are connected to a network with (or without) the DHCP server.

Point-to-Point Connection (not connected on a network)

System firmware is loaded into the HMI Interface Board via a computer using direct (point-to-point) Ethernet connection to the HMI Interface Board.

This procedure assumes the HMI Interface Board and the computer are not connected to a network. As a result, the computer static IP address must be configured manually in the computer. This is the simplest method to connect to an HMI interface board, and is the recommended approach.

The static IP Address of the HMI Interface Board is **169.254.0.10** by default.

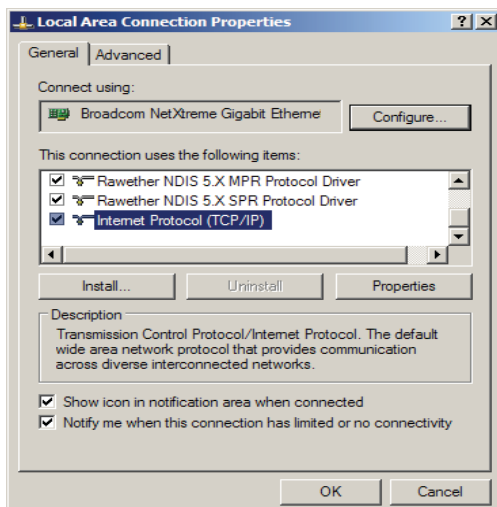
IMPORTANT To have more than one HMI Interface Board (i.e. Drive) connected on the same network with no DHCP Server, all HMI Interface Boards must be configured with distinct static IP addresses.

This process must occur before the drive is connected to the common network. Failure to do so results in conflicting HMI Interface Boards with the same IP address.

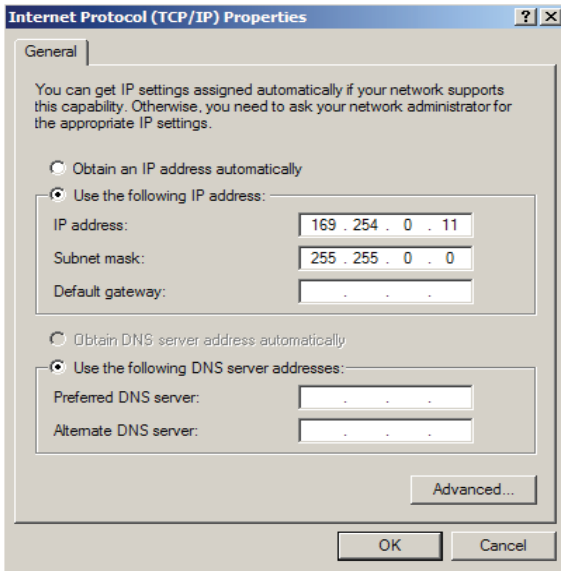
If the HMI Interface Board has been configured with a different static IP address (other than the default HMI Interface Board IP Address of **169.254.0.10**), choose an appropriate laptop or desktop static IP address (an address different from the one of the HMI Interface Board). The HMI Interface Board and a computer must both be configured with distinct IP addresses in order to communicate.

Configure a Static IP Address using Windows XP

1. From the Start menu, click Settings>Network Connections>Local Area Connection.
2. Click the General tab, and click Properties.
3. Under the General tab, scroll down and select Internet Protocol (TCP/IP), and click Properties.



- Click Use the following IP address and enter the laptop/desktop's IP Static Address of 169.254.0.11 (an address different from the one of the HMI Interface Board).



Enter a Subnet mask of 255.255.0.0. All other entries can be left blank.

- Press OK on the two open dialogs, and Close on the Local Area Connection Status dialog.

Upon completion, refer to [Download System Firmware to the HMI Interface Board on page 12](#).

Configure a Static IP Address using Windows 7

- From the Start menu, select Control Panel>Network and Sharing Center.
- Click Change Adapter Settings, and double-click Local Area Connection.
- Under the General tab, click Properties.
- Under the Networking tab, scroll down and select Internet Protocol Version 4 (TCP/IP). Click Properties.
- Click Use the following IP address and enter the laptop/desktop's IP Static Address of 169.254.0.11 (an address different from the one of the HMI Interface Board).

Enter a Subnet mask of 255.255.0.0. All other entries can be left blank.

- Click OK on the two open dialogs, and Close on the Local Area Connection Status dialog.

Upon completion, refer to [Download System Firmware to the HMI Interface Board on page 12](#).

Connect to a Network Without a DHCP Server

System firmware is loaded into the HMI Interface Board(s) via a computer using an Ethernet connection.

When the computer is connected to a network without a DHCP Server, the HMI Interface Board(s) and the computer must be manually configured with distinct static IP addresses.

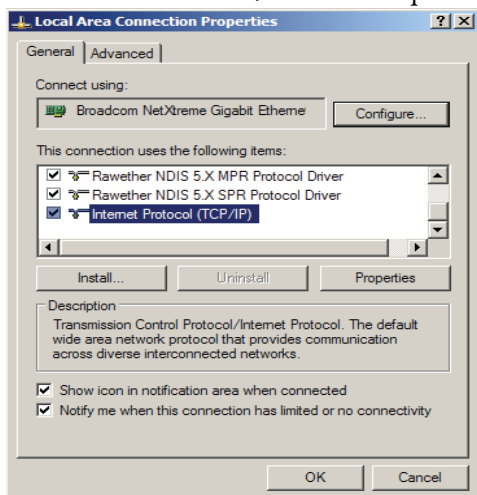
If the HMI Interface Board(s) has been configured with a different static IP address (other than the default HMI Interface Board Static IP 169.254.0.10.), choose an appropriate static IP address for the computer (within the same subnet as the HMI Interface Board(s)).

The HMI Interface Board and the computer must both be configured with distinct IP Addresses in order to communicate.

- TIP** To have more than one HMI Interface Board connected on the same network where there is no DHCP Server, all HMI Interface Boards must be configured with distinct Static IP Addresses.
- This process must occur before the drive is connected to the common network. Failure to do so results in conflicting HMI Interface Boards with the same IP address.

Configure a Static IP Address using Windows XP

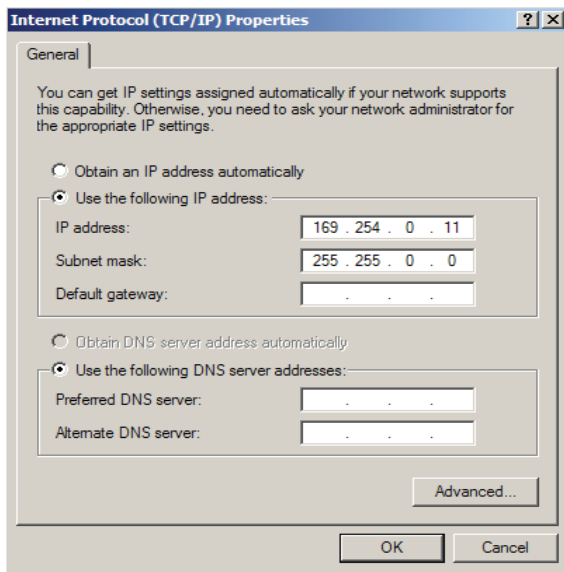
1. From the Start menu, click Settings>Network Connections>Local Area Connection.
2. Click the General tab, and click Properties.



3. Under the General tab, scroll down and select Internet Protocol (TCP/IP), and click Properties.

- Click Use the following IP address and enter the dedicated laptop or desktop static IP address of 169.254.0.11 (an address different from the one of the HMI Interface Board(s)).

Enter a Subnet mask of 255.255.0.0. All other entries can be left blank.



- Click OK on the two open dialogs, and click Close on the Local Area Connection Status.

Upon completion, refer to [Download System Firmware to the HMI Interface Board on page 12](#).

Configure a Static IP Address using Windows 7

- From the Start menu, select Control Panel>Network and Sharing Center.
- Click Change Adapter Settings, and double-click Local Area Connection.
- Under the General tab, click Properties.
- Under the Networking tab, scroll down and select Internet Protocol Version 4 (TCP/IP), and click Properties.
- Click Use the following IP address and enter the laptop/desktop's IP Static Address of 169.254.0.11 (an address different from the one of the HMI Interface Board).

Enter a Subnet mask of 255.255.0.0. All other entries can be left blank.

- Click OK on the two open dialogs, and Close on the Local Area Connection Status dialog.

Upon completion, refer to [Download System Firmware to the HMI Interface Board on page 12](#).

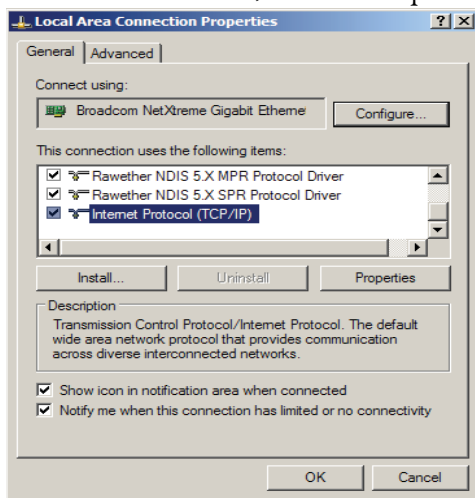
Connect to a Network With a DHCP Server

System firmware is loaded into the HMI Interface Board via a computer (i.e. laptop or desktop) using an Ethernet connection. The HMI Interface board and a laptop or desktop must both be configured with distinct IP addresses to communicate.

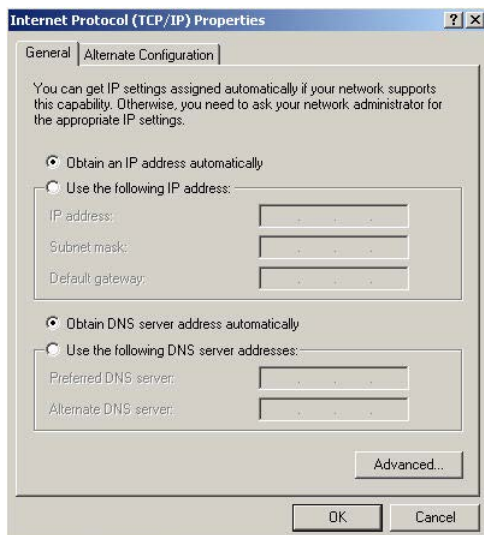
When connected to a network with a DHCP Server present, the computer can be configured to automatically receive a Dynamic IP address.

Configure a Dynamic IP Address using Windows XP

1. From the Start menu, click Settings>Network Connections>Local Area Connection.
2. Click the General tab, and click Properties.



3. Under the General tab, scroll down and select Internet Protocol (TCP/IP), and click Properties.
4. Click Obtain an IP address Automatically. Click OK on the two open dialogs, and Close on the Local Area Connection Status dialog.



Upon completion, refer to [Download System Firmware to the HMI Interface Board on page 12](#).

Configure a Dynamic IP Address using Windows 7

1. From the Start menu, select Control Panel>Network and Sharing Center.
2. Click Change Adapter Settings, and double-click Local Area Connection.
3. Under the General tab, click Properties.
4. Under the Networking tab, scroll down and select Internet Protocol Version 4 (TCP/IP). Click Properties.
5. Click Obtain an IP address Automatically.
6. Click OK on the two open dialogs, and Close on the Local Area Connection Status dialog.

Upon completion, refer to [Download System Firmware to the HMI Interface Board on page 12](#).

Download System Firmware to the HMI Interface Board

The information contained within this document is only applicable to PowerFlex 7000 ForGe Drives which utilize the new HMI Interface Board within the drive.

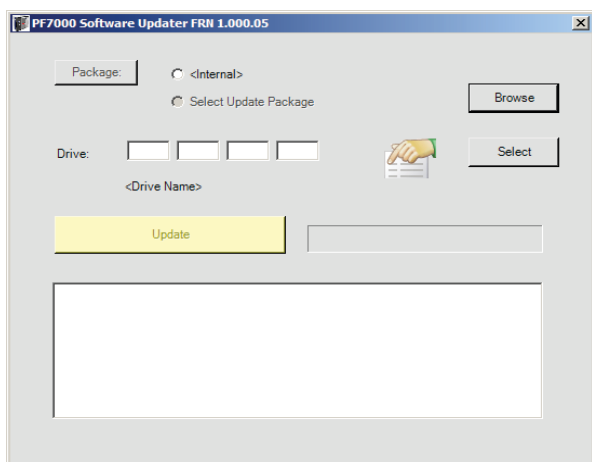
The PowerFlex 7000 Software Updater Utility is a Rockwell Automation program designed specifically to update system firmware on PowerFlex 7000 Forge Drives equipped with an HMI Interface Board. The utility can be run on Windows XP, Windows 7 and Windows CE.

Select a Drive for System Firmware Download

TIP Windows Firewall must be disabled during this process. Re-enable the firewall once this process is completed

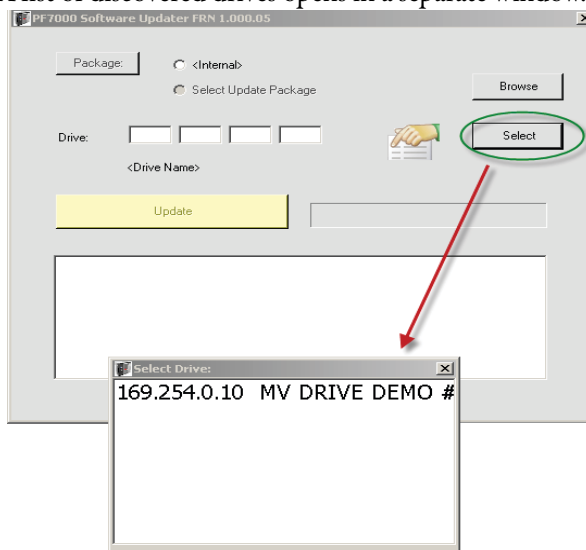
1. Double-click 80189-259-03.exe on your desktop.

IMPORTANT The file name changes as new Firmware revisions become available.



2. Click Select.

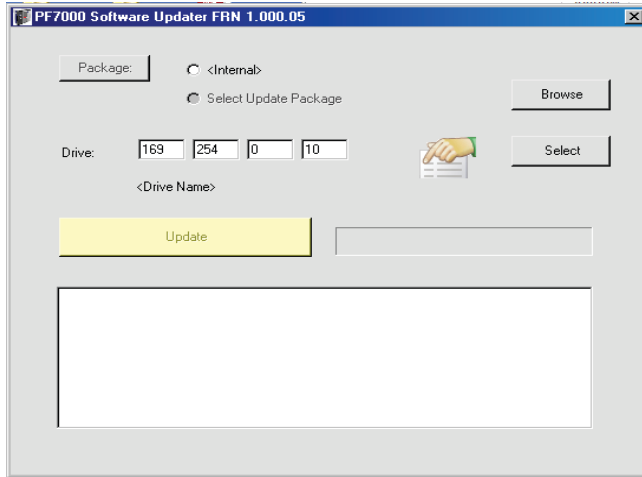
A list of discovered drives opens in a separate window.



3. Select the desired HMI Interface Board (PowerFlex 7000 Forge Drive) from the list.

TIP If the IP address of the drive is known beforehand, enter it in the provided blank fields.

The HMI Interface Board IP is now displayed in the Drive fields.

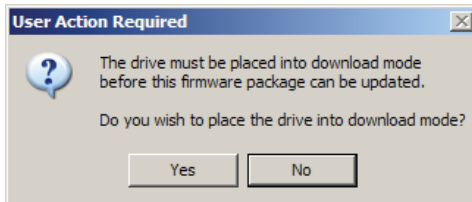


Update Selected Drive

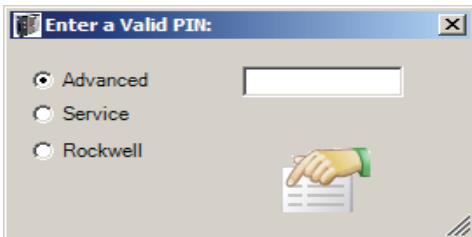
Once the desired IP address of the drive is either selected or entered, the drive must be placed in Download Mode.

1. Click Internal, and click Update.

The drive may need to be placed in download mode.



2. Click Yes, and enter the appropriate PIN value for the desired access level.

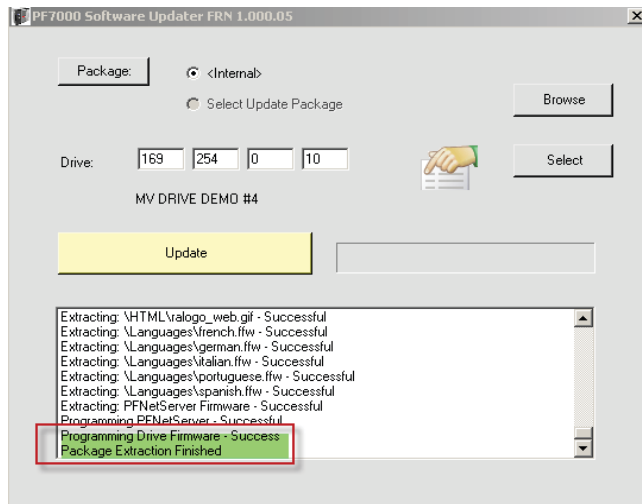


TIP The PIN codes required for the firmware download are the same PIN codes used in the operator interface. Unless changed, the Advanced PIN is 0 by default. If an incorrect PIN is entered, the update process must be restarted.

3. Press Enter on the keyboard.

A bar graph shows the progress of the file transfer to the HMI Interface Board. A status window under the Update button shows information about the update progress.

Once the entire Package has been downloaded, the HMI Interface Board will perform a validation process on the contents.



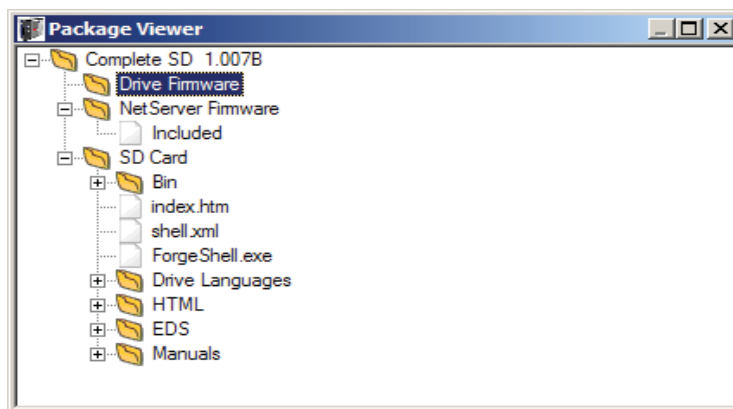
Status strings provide information about each step in the process:

- Validating each file
- Extracting each file
- Completion status

If any of the contents fails validation, or the drive is not in download mode to accept an included .FFW file, the entire process will be aborted.

IMPORTANT To receive status information from the HMI Interface Board module, UDP port 514 must be permitted by the updating computer's firewall.

TIP Press Package to preview the contents of the selected radio button



The Package View dialog shows the generic contents of the SD Card which will be created or updated on the HMI Interface Board. The PowerFlex 7000 ForGe Drive Firmware and HMI Interface Firmware may also be included in the Package. In this example, the HMI Interface Board Firmware will be updated, but no update is contained for the Drive Firmware.

Troubleshooting

1. The PowerFlex 7000 Software Updater uses the following Ethernet ports:

- TCP 20,21 for FTP transfer of files
- UDP 20034 for the discovery process of drives
- UDP 514 for status strings for each step of the update process

To function properly, any firewall that may be utilized must not block these ports, or the firewall temporarily disabled.

2. If the PC has multiple Ethernet ports (referred to as MultiHoming) and problems are encountered, disable all ports except the one connected to the drive network.
3. If a Comm Error is encountered while using the PowerFlex 7000 Software Updater during the download operation, press the Reset button on the HMI Interface Board and try the download process again.

Notes:

Notes:

Notes:

Rockwell Automation Support

Rockwell Automation provides technical information on the Web to assist you in using its products.

At <http://www.rockwellautomation.com/support>, you can find technical manuals, technical and application notes, sample code and links to software service packs, and a MySupport feature that you can customize to make the best use of these tools. You can also visit our Knowledgebase at <http://www.rockwellautomation.com/knowledgebase> for FAQs, technical information, support chat and forums, software updates, and to sign up for product notification updates.

For an additional level of technical phone support for installation, configuration, and troubleshooting, we offer TechConnectSM support programs. For more information, contact your local distributor or Rockwell Automation representative, or visit <http://www.rockwellautomation.com/support/>.

Installation Assistance

If you experience a problem within the first 24 hours of installation, review the information that is contained in this manual. You can contact Customer Support for initial help in getting your product up and running.

United States or Canada	1.440.646.3434
Outside United States or Canada	Use the Worldwide Locator at http://www.rockwellautomation.com/support/americas/phone_en.html , or contact your local Rockwell Automation representative.

New Product Satisfaction Return

Rockwell Automation tests all of its products to ensure that they are fully operational when shipped from the manufacturing facility. However, if your product is not functioning and needs to be returned, follow these procedures.

United States	Contact your distributor. You must provide a Customer Support case number (call the phone number above to obtain one) to your distributor to complete the return process.
Outside United States	Please contact your local Rockwell Automation representative for the return procedure.

Documentation Feedback

Your comments will help us serve your documentation needs better. If you have any suggestions on how to improve this document, complete this form, publication [RA-DU002](#), available at <http://www.rockwellautomation.com/literature/>.

Medium Voltage Products, 135 Dundas Street, Cambridge, ON, N1R 5X1 Canada, Tel: (1) 519.740.4100, Fax: (1) 519.623.8930

Online: www.ab.com/mvb

Allen-Bradley, Rockwell Software, Rockwell Automation, and TechConnect are trademarks of Rockwell Automation, Inc.

Trademarks not belonging to Rockwell Automation are property of their respective companies.

www.rockwellautomation.com

Power, Control and Information Solutions Headquarters

Americas: Rockwell Automation, 1201 South Second Street, Milwaukee, WI 53204-2496 USA, Tel: (1) 414.382.2000, Fax: (1) 414.382.4444

Europe/Middle East/Africa: Rockwell Automation NV, Pegasus Park, De Kleetlaan 12a, 1831 Diegem, Belgium, Tel: (32) 2 663 0600, Fax: (32) 2 663 0640

Asia Pacific: Rockwell Automation, Level 14, Core F, Cyberport 3, 100 Cyberport Road, Hong Kong, Tel: (852) 2887 4788, Fax: (852) 2508 1846