

ZB3545TP Automatic SMT Desktop 4 Heads 6 Cameras 38 tubes Strap LED Pick And Place Chip Mounting Machine With Visual System Optional Yamaha Series Feeder Supply



(RE:

1. This machine is necessary to use together with feeders, please provide your feeder size & qty after placed machine order, if unknown can tell us details.
2. This machine is necessary to use together with air-compressor, please prepare it in local or buy it to ship together with machine.)

Details:

1).Main feeder (Optional)

Standard configuration: YAMAHA CL series: 8mm/12mm/16mm/24mm, Vibration Feeder

2).Industrial-strength up visual system

With professional visual algorithms to determine the center of the components, calcul

ate the position offset and angel offset so that we can pick and place efficiently.

3).Mute vacuum pump

With 2 built-in imported mute vacuum pump and a blow air pump.

4).Manual man-machine interface.

5).Chip place zone

Put the chips here, just need to set the corresponding coordinates.

6).PCB place zone

Place the PCB here while the SMT processing.

7).Exclusive development of Ethernet Device interface

Industrialstrength Ethernet interface connect conveniently to guarantee the machine reliable operation.

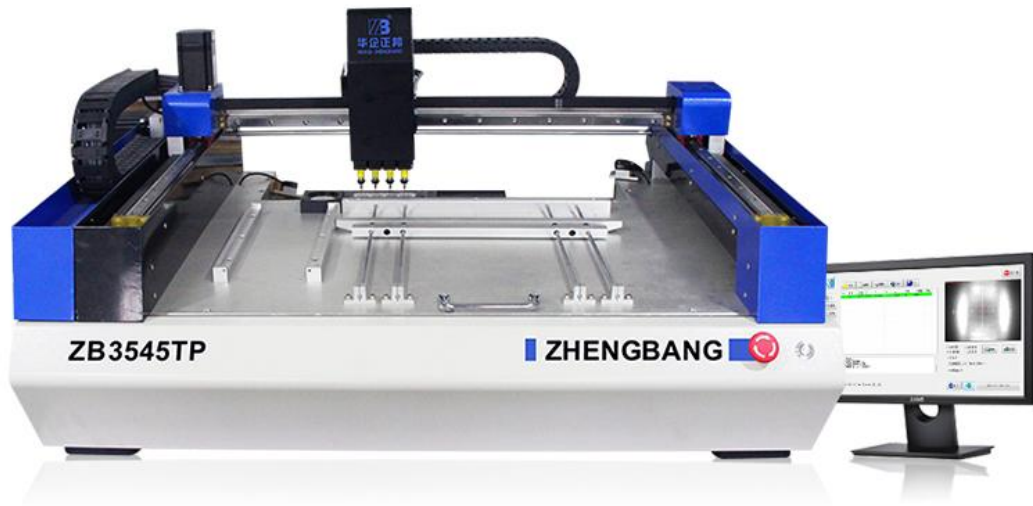
8). Industrial-strength under visual system

It's able to identify the Mark point and determine the coordinates of component by manual or automatic control.

9).Intelligent placement head

The well designed placement head has realized that double suction,vacuum test,missing part check,automatic dialing materials.





Optional KIT1

3545TP



+



**962C/962D
Reflow Oven**

+



**3040H
Solder paste printer**

Optional KIT2

3545TP



+



**962C/962D
Reflow Oven**

+



**3040H
Solder paste printer**

+

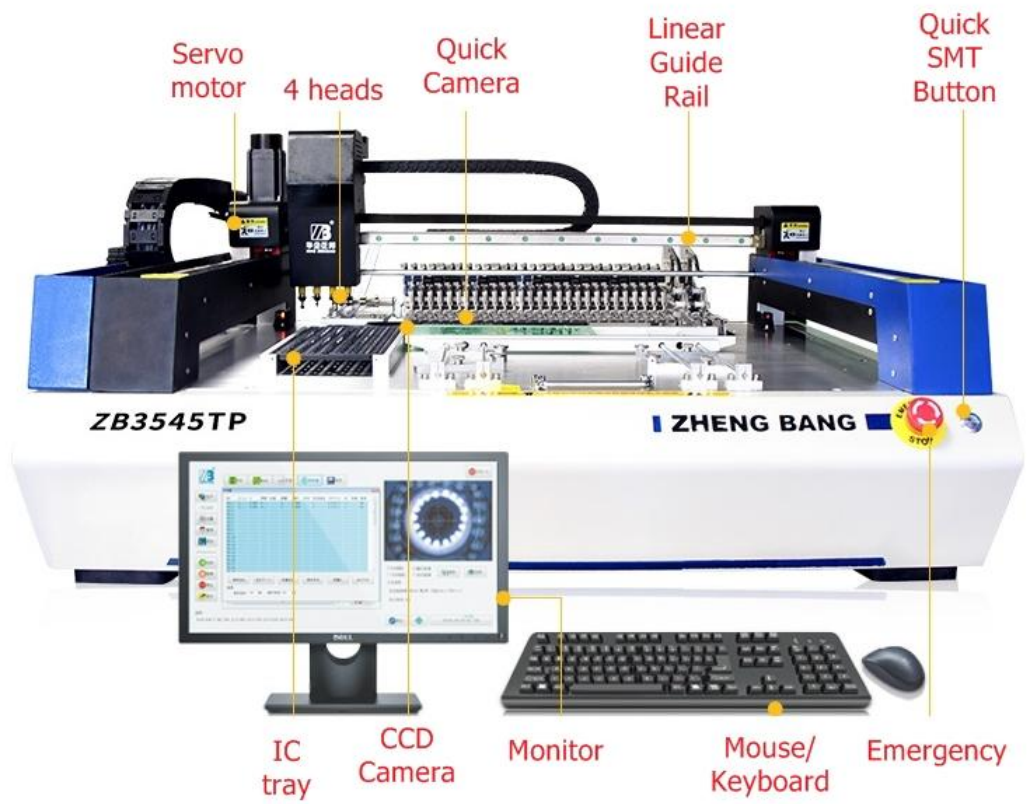


**500S
Solder paste Mixer**

ZB3545TP

4 Heads/ 6 Cameras/ Feeder Supply/ 38 tubes

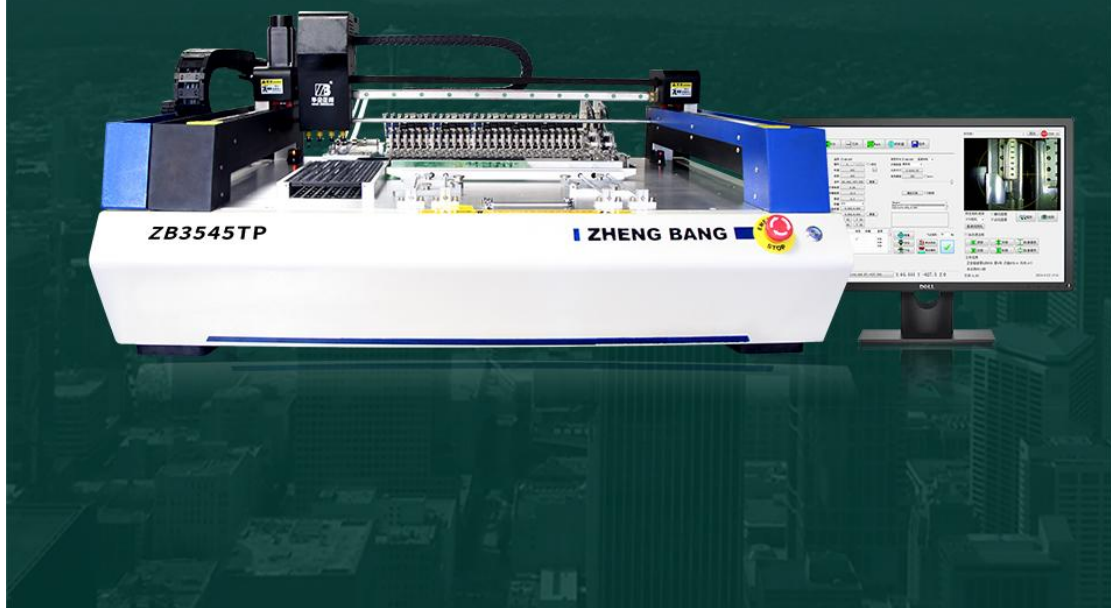




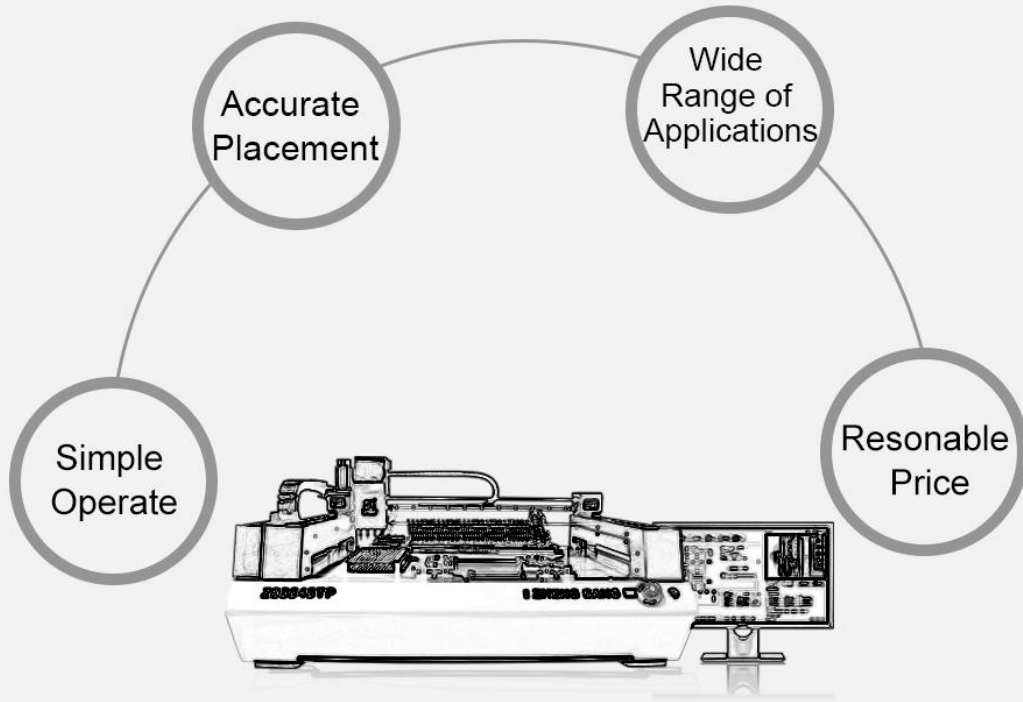
M O U N T I N G P C B B O A R D

AUTOMATIC VISION PICK AND PLACE MACHINE

ZB3545TP pick and place machine apply to conventional resistance capacitance, LED lamp, IC, BGA components high precision mounting, it's apply to R&D design, experiment teaching, Mass production.



< VALUE FOR MONEY >

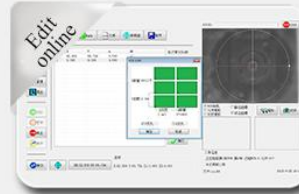
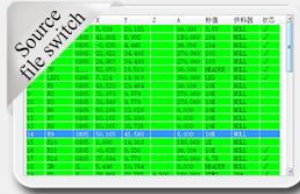
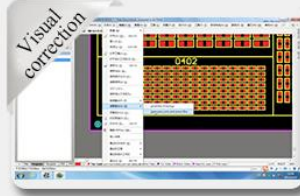


Production Specification

Reminder: The size is the result of manual measurement of the physical object, there are certain slight errors.

System	Project	Content
Mounting System	Model	ZB3545TP
	Mounting Numbers	4 PCS
	Mounting Precision	0.025 mm
	Mounding Angle	0 ~ 360°
	Theoretical Speed	7500 PCS/h
	Normal Mounting	6000 PCS/h
	Visual Mounting	5000 PCS/h
	Suction Nozzle Type	Juki Series Nozzle
	Applicable Element	RC (0402, 0603, 0805, 1206 etc) LED Lamp Beads (0603, 0805, 3014, 5050 etc) Chip (SOT, SOP, QFN, BGA etc)
PCB	PCB Minimal Size	<5.5 mm
	PCB Maximum Size	10×10 mm
	PCB Thickness	350×450 mm
	PCB Warping Allowable Value	≤2 mm
Feeder Tank	Type	YAMAHA CL Materials Feeder
	Feeder	8mm 12mm 16mm 24mm 32mm
	Numbers	38 level
	Tubular Materials Feeder	YAMAHA YV materials feeder
	IC Tray	Postposition 1 PC Tray
X/Y/Z Axis	X/Y Axis Moving Range	655×575 mm
	Z Axis Moving Range	12 mm
Visual System	A Visual Camera	CCD High-Definition Camera
	Numbers of Visual	6PCS(parts camera, PCB camera, High Speed Identification*4)
	Recognition Capability	MAX.22*22mm
Control System	PC System	MicrosoftWIN7
	Operational Software	Researching and Development Independently
	Compatible File Format	CSV、 TXT.format
	Program Method	Support online and offline ways
Basic Parameter	Air Pressure	0.8 Mpa
	Vacuum Mode	Vacuum Generator
	Air Pressure	-80 kpa
	Power	500W
	Power Supply	AC220V±10% 50Hz
	Outline Size	L 1185× W 840 × H 560 mm
	Net Weight	123kg

< NINE BIG CORE FUNCTIONS >



01 CONFIGURING THE STEPPER SERVO MOTOR

Realizing closed-loop control of position, speed and torque to Overcoming step-out problems of stepper motors, meeting high precision positioning and smooth low speed operation needs.



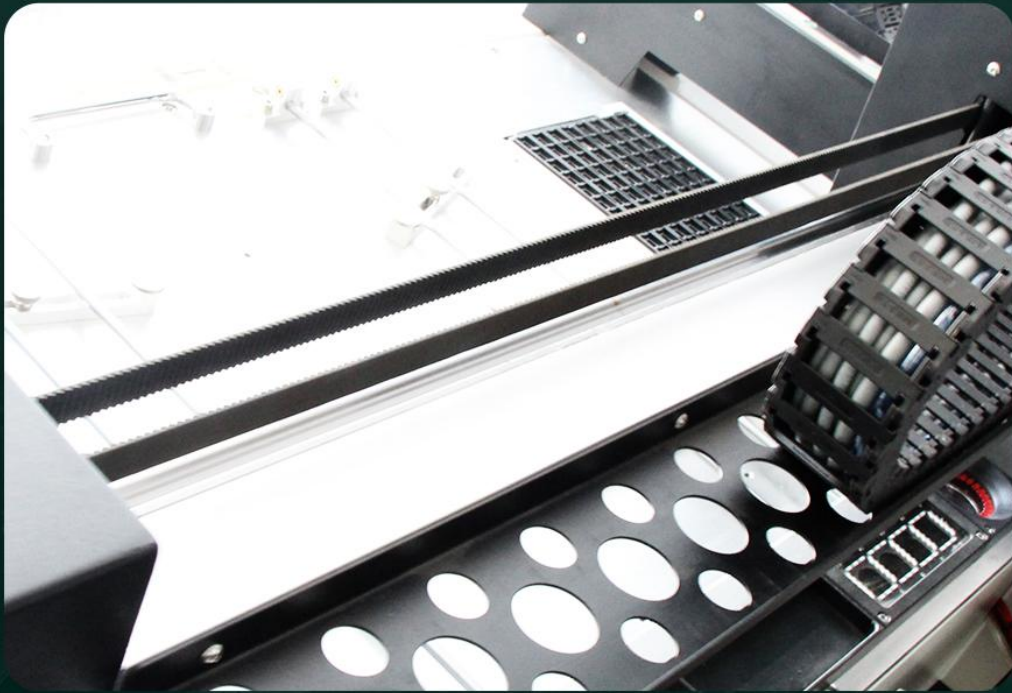
02 TAIWAN HIWIN LINEAR GUIDE

Using TAIWAN HIWIN linear guide.
Smoothly and high speed mounting makes more
stable, more accuracy.



03 TRANSMISSION BELT

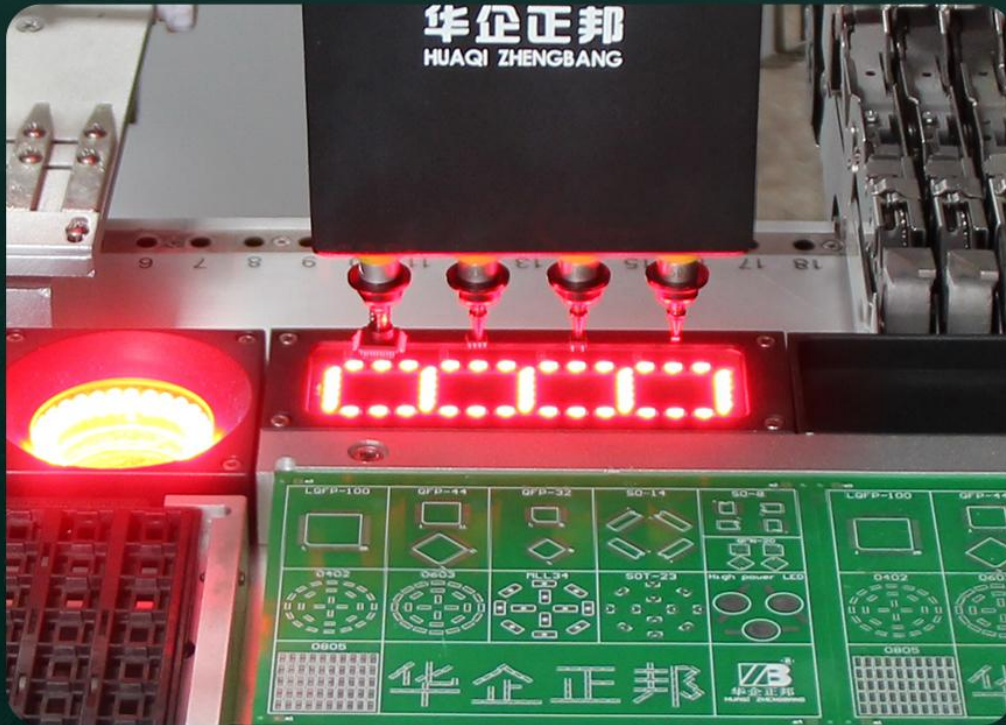
Timing belt:Wear-resistant , Anti-aging , Not easily deformed, Stretch, high precision.



04

4 GROUPS OF FAST RECOGNITION CAMERAS (SMALL COMPONENT CAMERA)

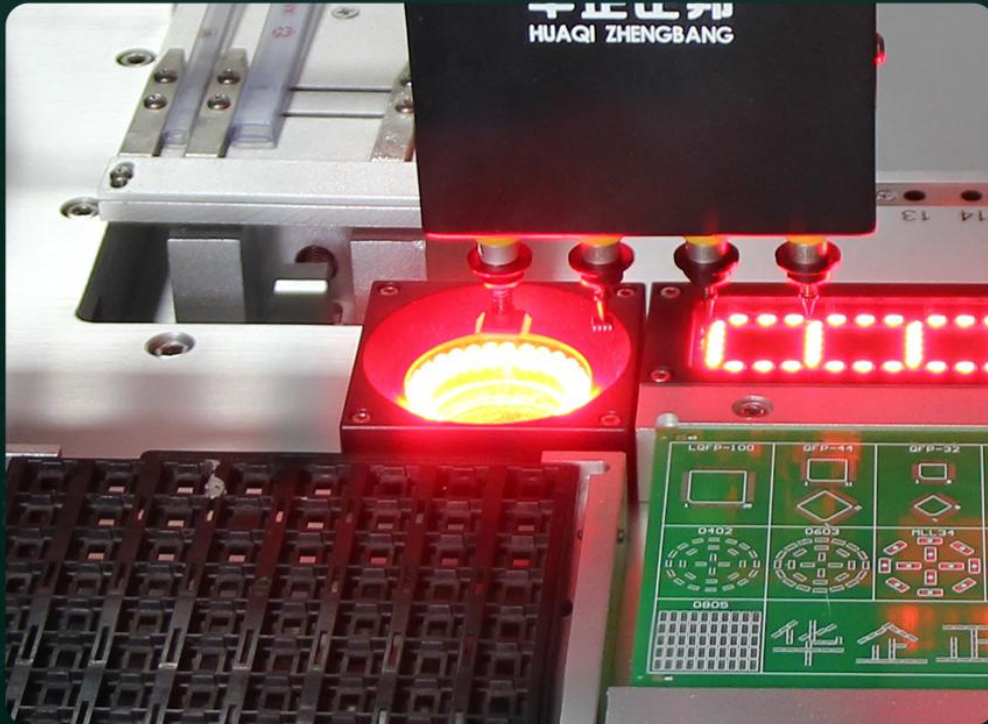
4 groups of fast recognition cameras could improve RC chip recognition efficiency



05

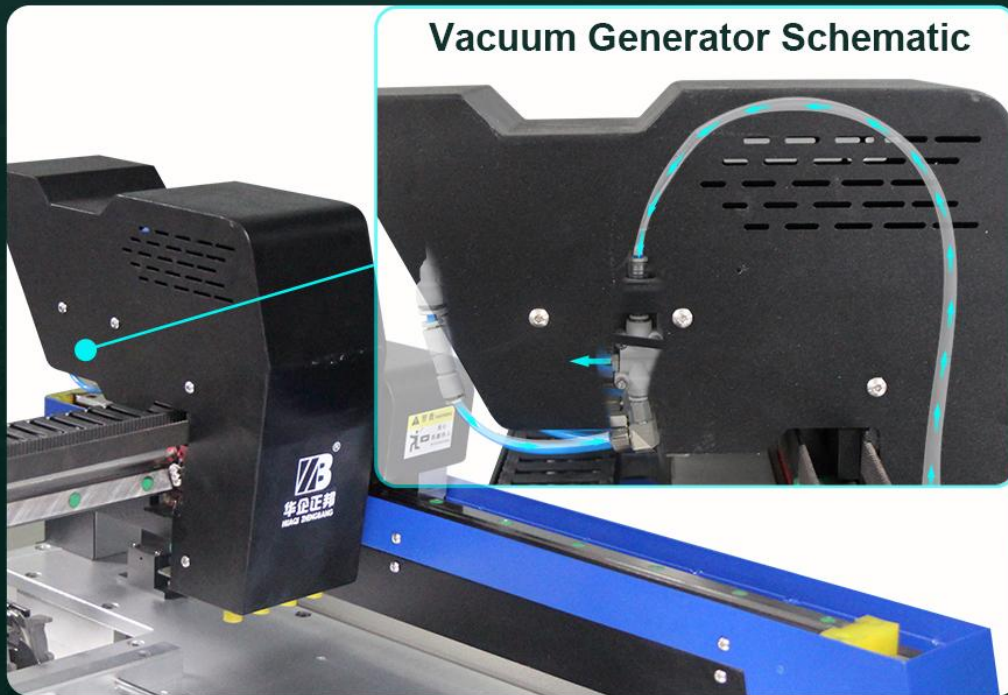
CCD HD RECOGNITION CAMERA (BIG COMPONENT CAMERA)

Improving IC mounting accuracy, Correction of picking offset.



06 VACUUM GENERATOR

Generate negative pressure with positive pressure air source, Efficient, clean.
Strong negative pressure capability, Capable of sucking large and small devices stably for a long time.



07

BUILT-IN INDUSTRIAL PC AND WINDOWS SYSTEM



- Windows system, simple and convenient operate, Stable performance.



- The embedded industrial PC system, quality is absolutely stabl.

08

SUPPORT MULTIPLE FEEDERS

Support for 38 pcs Yamaha smt feeder location.
Tube vibration feeder, IC tray.



38PCS YAMAHA 8mm Feeder Location



Vibration Feeder



IC Tray

1 hours study could operate, 3 days proficiency,
7 days mastery
Easy to learn, Easy to understand, Easy to operate.

Production Menu

NO.	Name	Type	X	Y	A	Val	Feeder	NOZZLE	State
1	N0402	0402	2.651	36.449	135.00	0402	14#	5	✓
2	N0402	0402	19.257	39.913	247.50	0402	14#	4	✓
3	N0402	0402	49.651	20.021	225.00	0402	14#	3	✓
4	N0402	0402	73.535	19.670	360.00	0402	14#	2	✓
5	N0402	0402	92.749	19.521	315.00	0402	14#	1	✓
6	N0402	0402	0.643	39.713	292.50	0402	14#	5	✓
7	N0402	0402	19.900	43.665	270.00	0402	14#	4	✓
8	N0402	0402	37.151	19.221	225.00	0402	14#	3	✓
9	N0402	0402	63.135	19.670	360.00	0402	14#	2	✓
10	N0402	0402	88.200	19.635	270.00	0402	14#	1	✓
11	N0402	0402	5.987	34.757	337.50	0402	14#	5	✓
12	N0402	0402	33.100	20.635	270.00	0402	14#	3	✓
13	N0402	0402	53.149	17.121	315.00	0402	14#	2	✓
14	N0402	0402	80.535	18.970	360.00	0402	14#	1	✓
15	N0402	0402	-0.100	43.565	270.00	0402	14#	5	✓
16	N0402	0402	18.943	47.613	292.50	0402	14#	4	✓
17	N0402	0402	18.943	47.613	292.50	0402	14#	4	✓
18	N0402	0402	16.851	50.849	135.00	0402	14#	3	✓

Production File Area

Device Status Area

```

KSJ Device Init Success!
ksj device num=1
Connect the controller...
link mcu success!
MCU Ver:21
Read mcu thread run...
    
```

Production Function Area

Reset [Home] DX:0.000 DY:0.000 X 0 Y 0 Z 0

Camera Control Area

ECODE: [Image] [STOP]

Preview camera Static Dynamic [Zoom] [Capture]

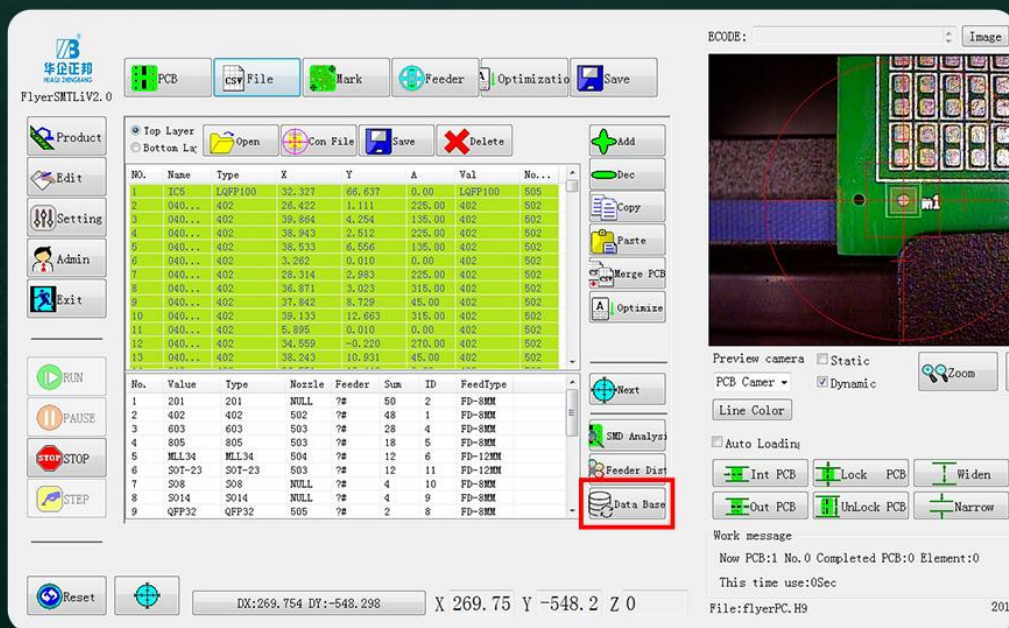
PCB Camer [Line Color]

Work Status Display

Work message
File:331.H9 2019-11-13 13:23

10 DATABASE FUNCTIONS

Automatically save edited component footprints
No need to repeat editing

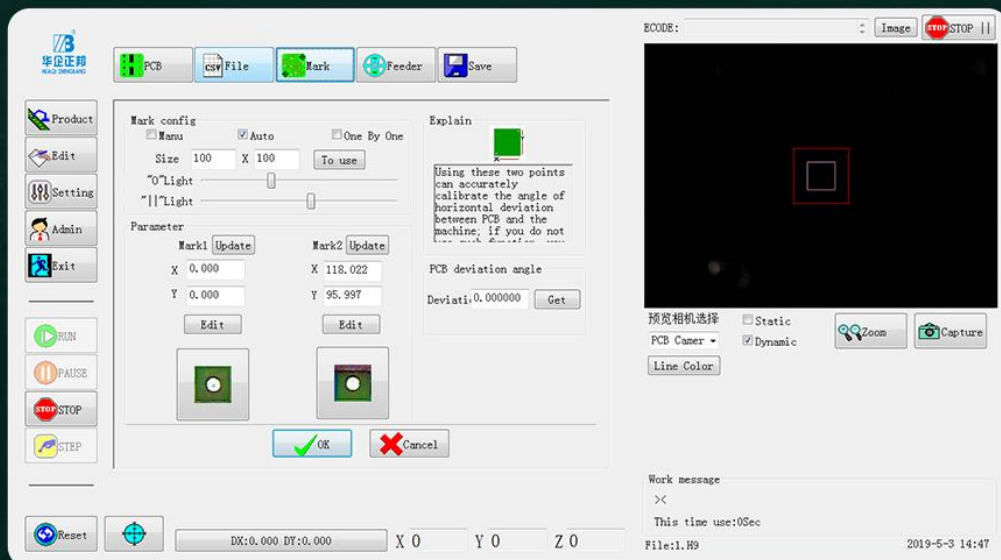


12

DOUBLE MARK POINT IDENTIFICATION

Double Mark recognition position function could correct the PCB is not standardized , misplaced and other offset automatic.

Added board-by-board identification function, it's could board-by board identification and correct the offset of the PCB board if have have panel or many pcb board, it's greatly improved consistency of placement accuracy.



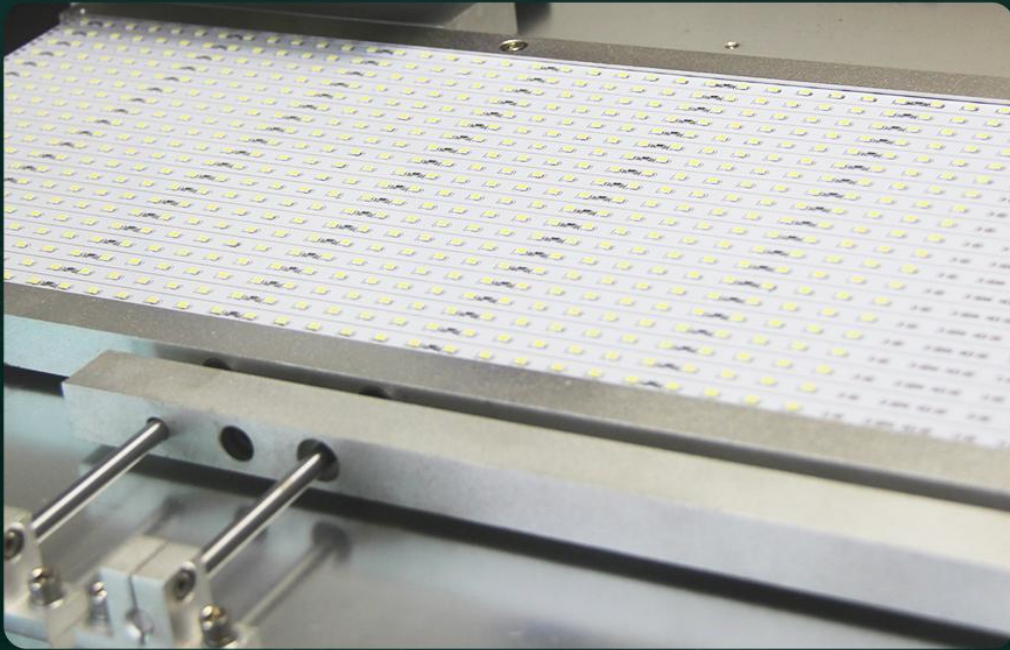
13 PCB MOUNTING

Support Max. 350*450mm PCB.
Suitable for most PCBs.



14 LED BAR MOUNTING

Can be modified to mount 0.6meter 0.9meter 1.2 meters long LED bars

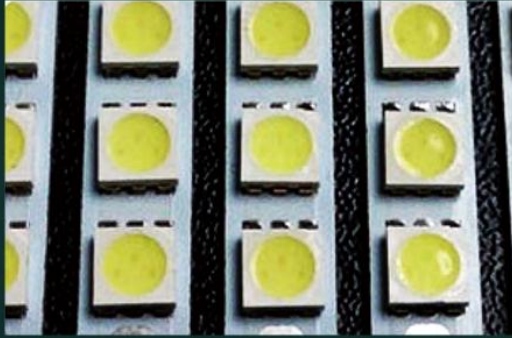


15 JUKI SERIES NOZZLE

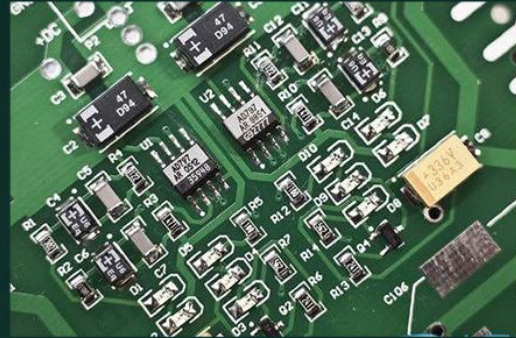
Meet various packaging requirements of pick and place.



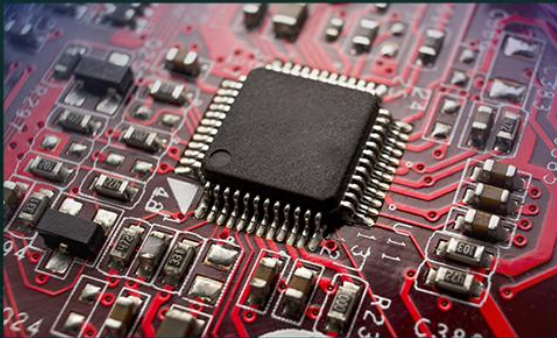
16 EFFECT PICTURE



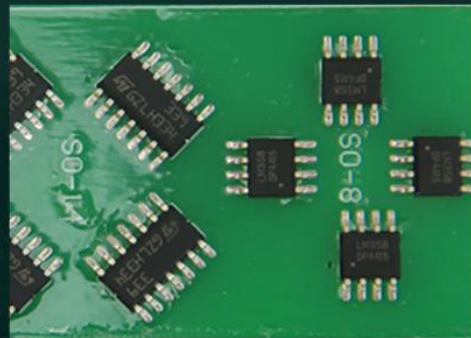
All kinds of LED mounting



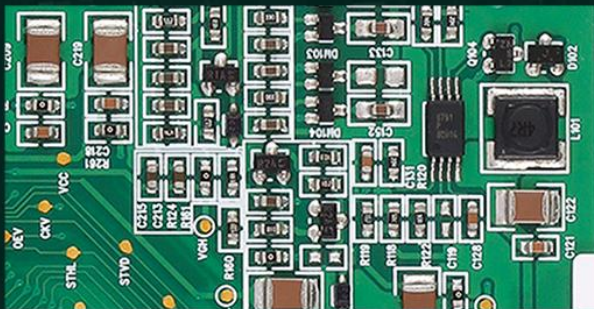
Resistance, capacitance, triode and IC mixed mounting



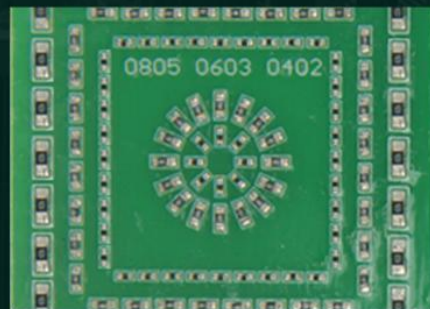
Resistance, capacitance and IC mixed mounting



IC each angel mounting



Resistance, capacitance and audion mixed mounting



0402, 0603, 0805 each angel mounting

Warranty

- 1)-Customers should inspect the item(s) and notify us within 7 days if have any problems. If you have any problem with your item please contact us before leaving feedback. All items must be issued an RMA number before they returned. The shipping cost of return goods is to be paid by the Buyer.
- 2). It's have 12 months Warranty from the date of purchase covering manufacturing defects. This warranty excludes any damage caused by the human.
- 3). If item is defective in 1 months for product reason, we will send you a replaced spare part without extra charger, or offer refund after we receive the defective item.
- 4). If item is defective after 1 months, you can still send it back to us. We will fix it for you free of charge and send it back to you, but you should bear the shipping cost.

Payment

- 1). We accept ESCROW and alipay here.
- 2). We also accept T/T, Western Union, Money Gram, etc.



Shipping

- 1). We will use FedEx/DHL/UPS/TNT/EMS for fast and safe shipping. We will use the most convenient one when you buy the product.
- 2). Before shipping, we will pack every product well for you. And please check the outside package when you receive the parcel well
- 3). If you have special requirement for shipping, please let us know in advance.



Import Taxes Or Duties

- 1). Import duties, taxes and charges are not included in the item price or shipping charges, These charges are the buyer' s responsibility.
- 2). Please check with your country' s customs office to determine what these additional costs will be prior to bidding/buying.
- 3). Please confirm detailed information about delivery invoice, like how much price we should write on delivery invoice, how much transportation charge we should write on invoice , how to describe the goods etc.
- 4). These charges are normally collected by the delivering freight (shipping) company or when you pick the item up- do not confuse them for additional shipping charge.

Feedback

If you are satisfactory with our goods and services, please give us Five Star positive feedback. If you are not satisfied, please let us know in time as well. We will do our best to support you to solve this. Please do not give us negative feedback without any prior communication. Hope your understanding and thanks in advance.

Please leave us 5 star feedback

Item as described: ★★★★★
Communication: ★★★★★
Shipping Speed: ★★★★★