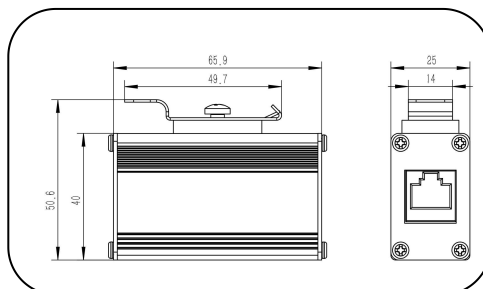


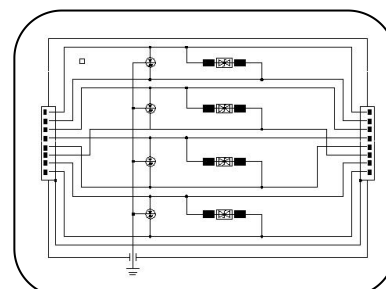
CAT6 RJ45 PROTECTOR

- D-48/RJ45-CAT6/H(POE)

- D-05/RJ45-CAT6/H



Dimension drawing



Basic circuit diagram

PROSURGE D-48 Cat6-PoE Protector is designed for protecting Gigabit Ethernet terminals such as Internet camera, IP Telephone sets, and wireless access point, suitable for use in category location B, C (ANSI/IEEE C62.41) or directly at the upstream near the protected devices.

- Data network protector In according with standard IEEE802.3at/af, UL497b, EN 50173, IEC61643-21;
- POE, POE+ compatible,
- Suitable for Cat. 5 (up to 100MHz) and Cat. 6 (up to 250MHz Class E)
- High discharge capability, total nominal discharge current 10kA 8/20 and Lightning current up to 1.0kA
- In aluminum housing
- Earth possible on DIN Rail
- Shielded RJ45 connector for cat6 network technology, 100BaseT, 1000BaseT/1000BaseTx, 8 wires protection

Part No.		D-05/RJ45-CAT6/H	D-48/RJ45-CAT6/H(POE)
In accordance with		IEEE 802.3at/af, UL497b, EN50173 Category 6, IEC 61643-21	
IEC/EN Category		D1/C1/C2/C3	
Nominal voltage (Vdc)	Un	5V	48V
Max. continuous operating voltage (Vdc)	Uc	6V	57V
C2 Nominal discharge current (8/20μs)	In	2.5kA	2.5kA
C2 Total nominal Discharge Current (8/20μs)		10kA	10kA
D1 Lightning impulse current (10/350μs)	Iimp	1kA	1kA
Nominal Current	IL	1A	1A
Voltage protection level (V)	@C2 (8/20μs) Up	<55(L-L); <400(L-G)	<150(L-L); <400(L-G)
	@C3 (1kV/μs) Up	<25(L-L); <500(L-G)	<110(L-L); <500(L-G)
Insertion loss		≤0.1dB	
Frequency range, max.	fG	250 MHz	
Transmission Speed		1000Mbps	
Transmission performance ---SPD + 100 m CAT6 Ethernet cable		CAT6 channel test pass	
Technology		Two-stage protection circuit, GDT/SAD technology	
Transmission standards		10BaseT/ 100BaseT/1000BaseT /1000BaseTX(CAT6)	10BaseT/ 100BaseT/1000BaseT /1000BaseTX(CAT6)/PoE, POE+
Pinning		1/2, 3/6, 4/5, 7/8	1/2, 3/6, 4/5, 7/8 for data; 1&2/ 3&6, 4&5/ 7&8 for PoE
Mounting		Attachment plug for DIN rail mounting	
Earthing		Earth on DIN Rail or grounding wire	
Material		Aluminum	
Type of Connection IN/OUT		RJ45 (shielded) Female/ Female	
Dimensions (mm)		66 X 51 X 25	
Operating temperature range		-40°C ~ +85°C (operating current adjusted to 40% @ +85°C)	