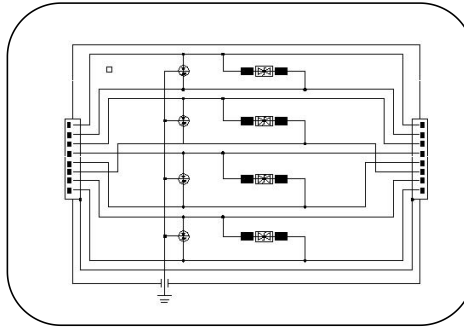
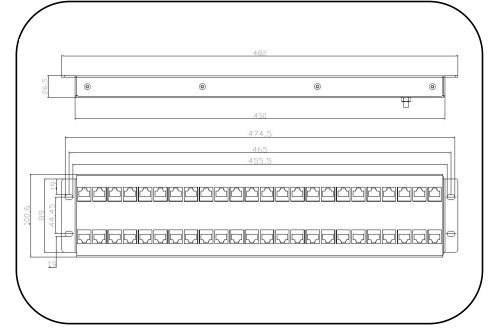


## NETWORK PROTECTOR-19" TECHNOLOGY

## DSB48/RJ45-CAT6-H(POE)-24P



Basic circuit diagram



Dimension diagram

**PROSURGE DSB48/RJ45-CAT6-H(POE)-24P** multi-ports CAT6-PoE Protector is designed for protecting Gigabit Ethernet terminals such as Internet camera, IP Telephone sets, and wireless access point, suitable for use in category location B, C (ANSI/IEEE C62.41) or directly at the upstream near the protected devices.

**Technical Features**

- 24 ports data network protector In according with standard IEEE802.3 at/af,UL497b,EN 50173,IEC61643-21
- POE, POE+compatible,
- Suitable for Cat. 5 (up to 100 MHz) and Cat. 6 (up to 250 MHz Class E)
- High discharge capability, total nominal discharge current 10kA 8/20 and Lightning current up to 1.0KA
- EMI Shielded Enclosure, 19" bay design, can be installed conveniently on the 19 inch's standard machine-cabinet.
- Two-stage protection circuit, Limit the transients with GDT and TVS.
- Shielded RJ45 connector for cat6 network technology, 100BaseT, 1000BaseT/1000BaseTx, 8 wires protection

Part No.		DSB48/RJ45-CAT6-H(POE)-24P
In accordance with		IEEE 802.3at/af, UL497b,EN50173 Category 6,IEC 61643-21
Ports		24 ports
Nominal voltage (Vdc) Un		48
Max. continuous operating voltage (Vdc) Uc		57
C2 Nominal discharge current(8/20us) In		2.5kA
C2 Total nominal Discharge Current (8/20us)		10kA
Lightning impulse current (10/350)	Iimp	1kA
Nominal Current	IL	1A
Voltage protection level (V)	@C2 (8/20μs)Up	<150(L-L); <400(L-G)
	@C3 (1KV/μs)Up	<110(L-L); <500(L-G)
Insertion loss dB		≤0.1
Frequency range, max.		250 MHz
Transmission Speed		1000Mbps
Transmission performance ---SPD + 100 m CAT6 Ethernet cable		CAT6 channel test pass
Response time		≤1ns
Technology		Two-stage protection circuit, GDT/SAD tech
Transmission standards		10BaseT/ 100BaseT/1000BaseT /1000BaseTX(CAT6)/ POE, POE+
Mounting		Rack mounting
Material		EMI Shielded Enclosure
Type of Connection IN/OUT		RJ45 (shielded)Female/ Female
Location		Indoor
Degree of protection		IP30
Dimensions (mm)		478*101*39
Operating temperature range		-40°C ~ +80°C