



The right choice for your application. Level sensors from ifm.

Automation solutions from ifm.



ifm.com/gb/level

Systems for level monitoring. The optimum solution for every requirement.

Contents

point level detection

Impedance spectroscopy in contact with the medium
Alternative to the turning fork, suppresses deposits and foam

Capacitive in contact with the medium
For overflow prevention and leakage monitoring

Capacitive without contact
For the detection through non-metallic tank walls

Capacitive in contact with the medium
For applications on hydraulic and coolant tanks

Contactless radar
For non-contact level measurement in tanks up to 10m

Guided wave radar in contact with the medium
For industrial and hygienic applications

Hydrostatic in contact with the medium
For industrial and hygienic applications on tanks and in free-flowing waterways

Ultrasonic without contact
For long distances and difficult surfaces

Photoelectric without contact
For long distances, angle-independent measurement with focused light spot

Photoelectric 3D
For bulk materials and for completeness monitoring

Accessories

moneo

continuous level measurement

5 YEARS
Warranty
on ifm products



Sensor type	Max. measuring range	Analogue output	Switching output	Approvals	
LMT, LMC	–	–	√	EHEDG, 3A, FDA, EC1935, WHG, ATEX, DNV/GL, FCM	4 – 5
LI	–	–	√	WHG	6 – 7
KG, KI; KQ	25	–	√		8 – 11
LK, LT	73	√	√	WHG	12 – 13
LW	1000	√	√	EHEDG, 3A, FDA, EC1935, USP VI	14 – 15
LR	200	√	√	EHEDG, 3A, FDA, EC1935, WHG	16 – 19
PG, PI, PA PS, PN, PE, PM	–	√	√	EHEDG, 3A, FDA, EC1935, ATEX, DNV/GL, FCM	20 – 25
UGT, UIT	800	√	√		26 – 27
O1D	980	√	√		28 – 29
O3D	800	√	√		30 – 31
					32 – 33
					34 – 35

Impedance spectroscopy. The alternative to tuning forks. Suppression of residues and foam.

Reliable detection:

Suppression of residues, splash-
ing water or foam.

Better than a tuning fork:

No mechanical components, fully
compatible regarding installation
and function.

Immediately ready for use:

Factory settings for the most
common media.

Adaptable using IO-Link:

Adaptation to and differentiation
of media configurable.

More transparency:

Read process values to optimise
the application.

Hygienic design:

High-grade stainless steel
housing with PEEK sensor tip.
Versions for industrial and
hygienic applications.

LMC type level sensors

Flexible mounting
thanks to orienta-
tion-independent
installation.

Approval to
DNV/IGL.

Complementary
switching outputs.

A thread
at the back
permits variable
insertion depths.



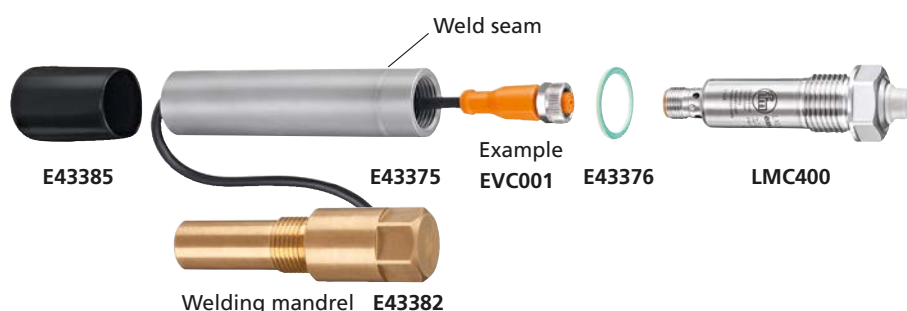
Process connection	Installation depth [mm]	Order no.	Order no.
Use		Water	Oil
G 1/2	10	LMC100	LMC110
G 1/2	21	LMC400	LMC410
1/2 NPT	34	LMC500	LMC510
1/2 NPT	40	LMC502	



For adapters
see pages
32 - 33

Installation example LMC400:

Rear installation of
the LMC400 sensor
in the pipe permits
variable installa-
tion depths.





LMT type level sensors

Flexible mounting thanks to orientation-independent installation.

Shock and vibration resistant in a robust stainless steel housing.

Hygienic approvals EHEDG, 3A and FDA.

Versions available as overflow prevention.

Complementary switching outputs.

Installation example LMT:

The E43414 adapter allows rear installation of sensors with customised installation lengths. The stainless steel adapter also provides a hygienic seal.



Process connection	Installation depth [mm]	Order no.	Order no.	Order no.
Approvals		Sanitary	WHG	ATEX
Preset to aqueous media				
G 1/2	11	LMT100	LMT191	
G 1/2	38	LMT102	LMT192	
G 1/2	153	LMT104	LMT194	
G 1/2	253	LMT105	LMT195	
G 3/4	28	LMT202	LMT292	
G 1	38	LMT302	LMT392	
Preset to oils, fats, powder				
G 1/2	11	LMT110		LMT01A
G 1/2	153			LMT03A
G 1/2	253			LMT04A
Preset to sugary media				
G 1/2	11	LMT121		

Example



Capacitive. For overflow prevention and leakage monitoring.

Ready in no time:
Easy mounting adjustment.

Flexible:
Normally closed / normally open
programmable.

Clear:
Clearly visible indication
of the switch points.

Variable use:
Insertion depths of
132 to 737 mm.

Certified:
Approval as overflow protection
or leakage sensor to the German
Federal Water Act.



LI5 type point level sensor

Optimised for use
in hydraulic oils
and coolants.

Modular mount-
ing concept for
flexible use.

It only takes one
push of a button
to adjust and set
the output
function.

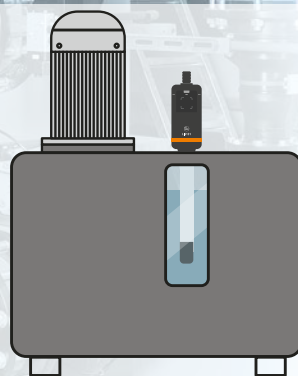
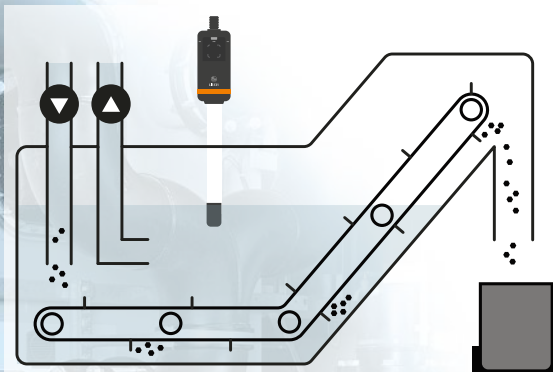
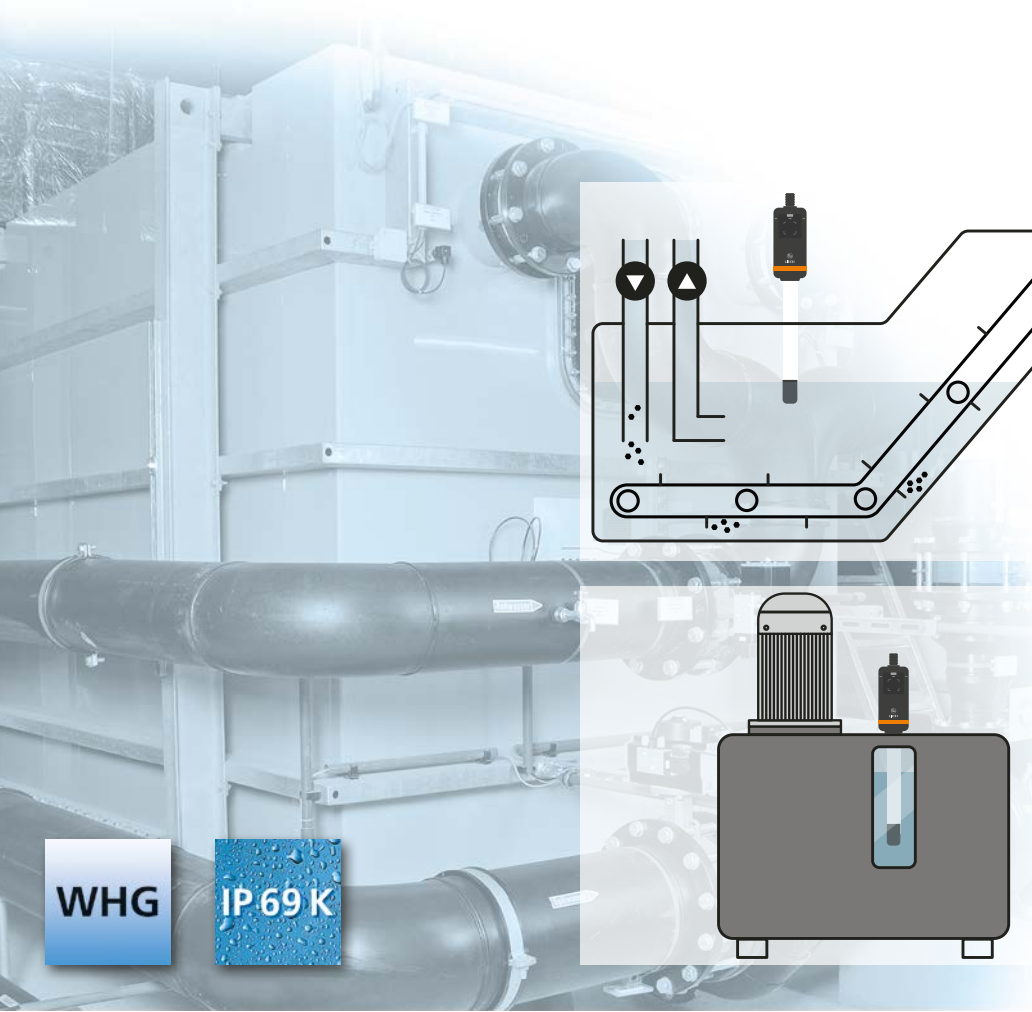
Factory preset
for water-based
media.



Probe length [mm]	Temperature water [°C]	Temperature oil [°C]	Order no.
2 switching outputs, 1 x temperature, 1 x level or 2 x level depending on damping (e.g. water/oil)			
132	-25...85	-25...85	LI5131
273	-25...85	-25...85	LI5132
481	-25...85	-25...85	LI5133
737	-25...85	-25...85	LI5134



For adapters
see pages
32 - 33



WHG

IP 69 K

LI2 type point level sensor
 Approved as leakage sensor and overflow prevention to the German Federal Water Act (WHG).
 Factory preset for oil-based media.



Probe length [mm]	Temperature water [°C]	Temperature oil [°C]	Order no.
2 switching outputs, 1 x temperature, 1 x level or 2 x level depending on damping (e.g. water/oil)			
132	-25...85	-25...85	LI2131
273	-25...85	-25...85	LI2132
481	-25...85	-25...85	LI2133
*Applications in accordance with WHG 0...85 °C			

Order now in the ifm
 webshop?
ifm.com

Capacitive. For detection through non-metallic tank walls.

User-friendly:

Many functions such as binary switching output, timer functions as output, damping function as well as normally closed / normally open and window function.

Communicative:

Process values, parameter setting data and diagnostic information can be transferred and evaluated via IO-Link.

Simple:

Parameter setting via IO-Link before installation, as an alternative also via pushbuttons on the sensor.

Repeatable:

Simple parameter setting of many sensors via "copy & paste" in the LR DEVICE software or via a memory plug.

Perfect:

Ingenuously simple switch point setting thanks to the LED display.

KG / KI type point level sensors

Capacitive sensors in cylindrical M18 or M30 housing.

Protection rating IP 65 to IP 69K.

High medium temperature up to 110 °C.

EMC resistance up to 30,000 V.

12-digit display for optimum switch point setting (KG / KI6000).



Sensing range [mm]	Connection	Setting	Order no.	Order no.	Order no.
DC PNP			normally closed	normally open	programmable
M18 housing, plastic					
0.5...40 nf	M12 connector	signal display			KG6000
8 nf	cable	teach button			KG5069 ¹⁾
12 nf	M12 connector	teach button			KG5066
0.5...30 nf	cable	potentiometer	KG5301	KG5303	
0.5...30 nf	M12 connector	potentiometer	KG5307	KG5309	
M30 housing, plastic					
0.5...40 nf	M12 connector	signal display			KI6000
20 nf	M12 connector	teach button			KI5083
0.5...40 nf	cable	potentiometer	KI5301	KI5303	
0.5...40 nf	M12 connector	potentiometer	KI5307	KI5309	
M30 housing, metal					
8 f	M12 connector	teach button			KI5085
15 nf	M12 connector	teach button			KI5087

¹⁾ Housing white PP

f: flush installation nf: non-flush installation



Easy empty and full teach on bypasses

Are suited for bypass installation for easy empty and full teach without value fluctuations or interruption of the process.



Installation with and without contact with the medium

Can operate in and outside the medium.



Detection of bulk material and liquids.

Are suited, in contrast to other measuring principles, for liquids and bulk material.

Trouble-free use.

Look through non-metallic walls.
Suppress deposits.
Versions for potentially explosive atmospheres (ATEX).



KQ type point level sensor

Capacitive sensors in small rectangular plastic housing.

Simple installation with installation adapters and fastening straps.

Condition-based maintenance through detection of deposits and soiling.

Identification of different media allows for use in applications such as mixing tasks in tanks.



12-digit display for optimum switch point setting (KG / KI6000).



Sensing range [mm]	Connection	Order no.
DC PNP		
12 nf	cable 2 m	KQ6002
12 nf	M8 plug	KQ6004
12 nf	M12 plug	KQ6005
12 nf	cable 2 m	KQ5100
12 nf	M12 plug	KQ5101
12 nf	M8 plug	KQ5102

Capacitive.
For continuous detection
through non-metallic
tank walls.

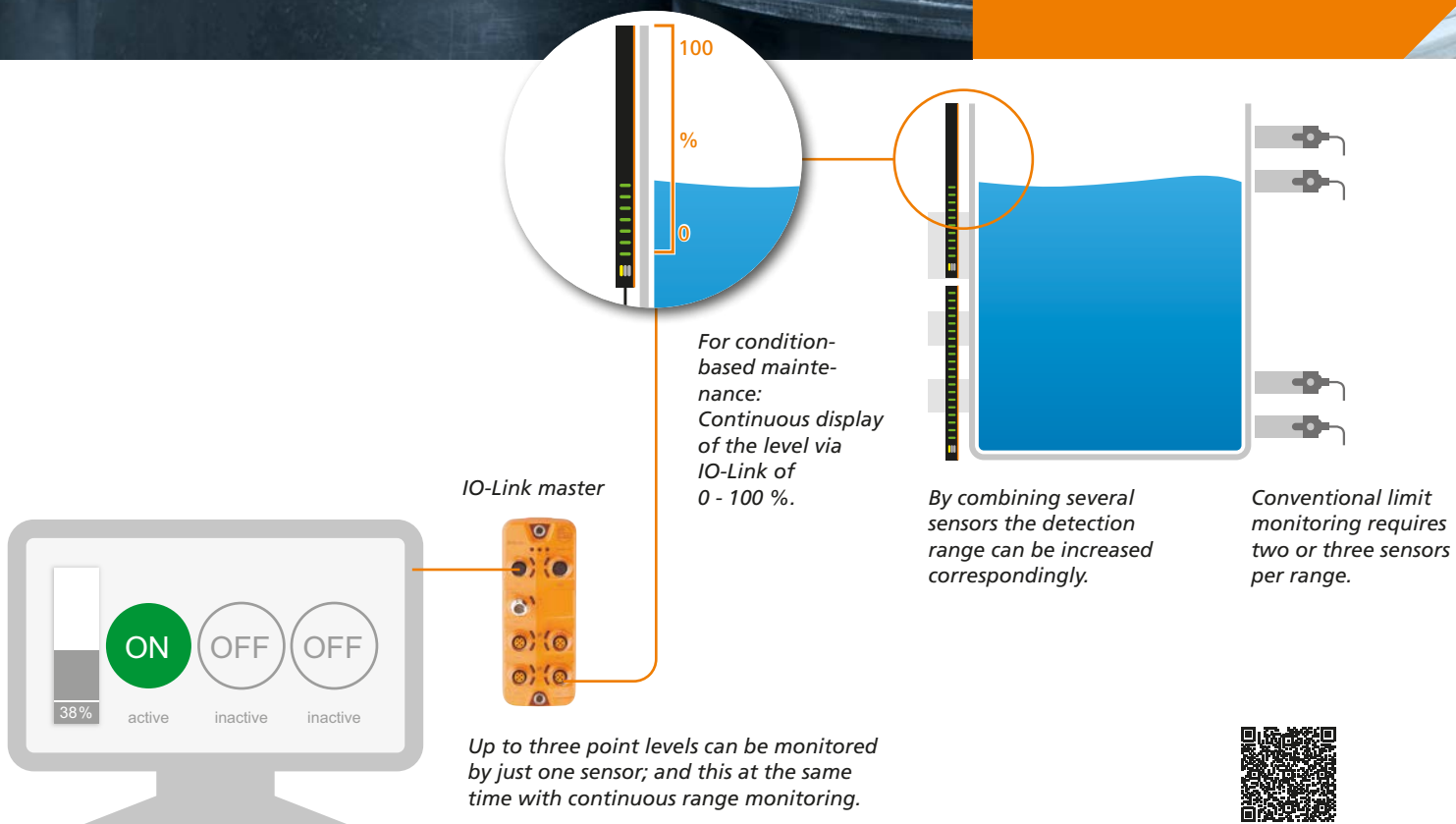
Permanently in view:
Continuous range monitoring
of levels.

Easy installation:
"See" through non-conductive
tank walls without contact and
maintenance.

Three switch points in one:
Reduce the number of sensors –
monitor three point levels with
only one sensor.

Quick set up:
Configure switch points easily via
IO-Link.

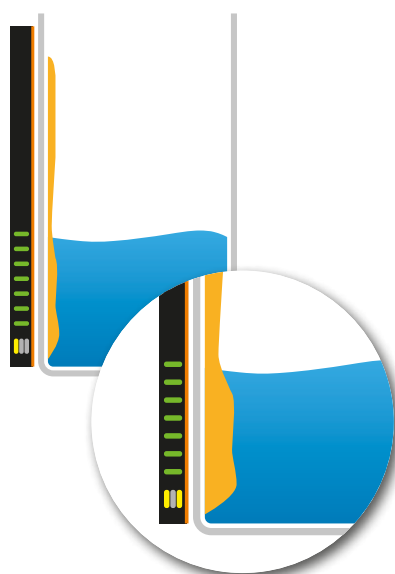
No incorrect switching:
For reliable switching.
Build-up and tank walls can be
suppressed by means of offset.





Determine the point level via bypass

With conductive tank walls, the sensor is installed on a non-conductive bypass pipe. To ensure reliable level detection in a thin bypass pipe, liquids can be detected as from a pipe diameter of 10 mm by means of the pipe adapter.



Suppress and monitor deposits.

KQ10 type point level sensors

Process values of 0...100 % can continuously be transferred via IO-Link in ranges of 250 mm without dead band.

Setting of switch points and other functions, such as normally closed / normally open, hysteresis, or the orientation and the sensing face of the sensor via IO-Link.



Housing [mm]	Connection	Order no.
DC · 3 switching outputs, NO/NC programmable / maintenance		
Rectangular design plastic 250 x 28 x 16.7	cable 2 m, 5 pins	KQ1000
	cable 0.1 m, M12 connector, 5 pins	KQ1001

Accessories	Order no.
Adapter for flat mounting	E12675
Pipe adapter	E12676
Surface-mount tape	E12677
Cable tie	E10880
IO-Link interface	E30390
IO-Link master / PROFINET	AL1100
Connection cable	EVC058

Capacitive. For applications on hydraulic and coolant tanks.

Professional:

For industrial applications in water-based or oil-based media.

Variety:

Versions with 2 or 4 switching outputs or analogue output 4...20 mA / 0...10 V)

Safe:

Type LK12 with approval as overflow protection.

Combined:

Type LT for level and temperature monitoring.

Flexible:

Variable insertion depths thanks to clamp fitting.



LK type level sensors

Display and handling directly on the unit or via IO-Link.

As an option with analogue output or up to four switching outputs.

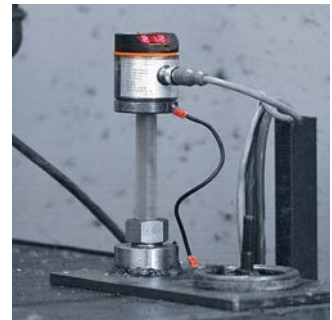
Suitable for oil temperatures up to 70 °C.

Versions complying with the German Federal Water Act selectable.



Probe length [mm]	Description	Order no.
2 switching outputs		
264		LK1022
472		LK1023
728		LK1024
264	Automatic medium detection	LK7022
472		LK7023
728		LK7024
264	WHG	LK1222
472		LK1223
728		LK1224
1 switching output and 1 analogue output 4...20 mA / 0...10 V		
264		LK3122
472		LK3123
728		LK3124
4 switching outputs		
264		LK8122
472		LK8123
728		LK8124





LT type level sensors

Display and handling directly on the unit or via IO-Link.

Suitable for water-based or oil-based media.

Suitable for oil temperatures up to 70 °C.

For level and temperature.



Probe length [mm]	Description	Order no.
4 switching outputs for level and temperature		
264	2 switching outputs for level	LT8022
472	2 switching outputs for level	LT8023
728	2 switching outputs for temperature	LT8024
1 analogue output, 1 switching output		
264	1 analogue output for level ¹⁾	LT3022
472	1 analogue output for level ¹⁾	LT3023
728	1 switching output for temperature ¹⁾	LT3024

¹⁾ Level / temperature selectable
* LT39xx und LT89xx available for Japan



For adapters
see pages
32 - 33

Contactless radar. For level measurement up to 10 m in tanks and open containers.

Simple:

Quick set-up, only one parameter required.

Designed to meet requirements:

Robust high-grade stainless steel housing and approvals tailored to hygienic and industrial requirements.

IO-Link:

Remote maintenance, an advantage especially for high tanks.

Precise:

Accurate and continuous level measurement for liquids.

Flexible:

Direct measurement or through non-metallic walls.



LW21 industrial level sensor

Can be used on open and closed tanks and containers.

Direct measurement or through non-metallic walls.

Measuring range 0.01...10 m.

Medium temperatures of -40...150 °C.

Pressure-resistant up to 8 bar.

Easily adjustable via IO-Link.



Process connection	Order no.
2 switching outputs or 1 switching output and 1 analogue output 4...20 mA	
Aseptoflex Vario G1	LW2120

* LW2160 with radio approval available for India and Malaysia

¹⁾ Outside of closed metal tanks, the sensor must be used with the E33705 antenna extension. Optional E33706 mounting set available.



Storage tanks



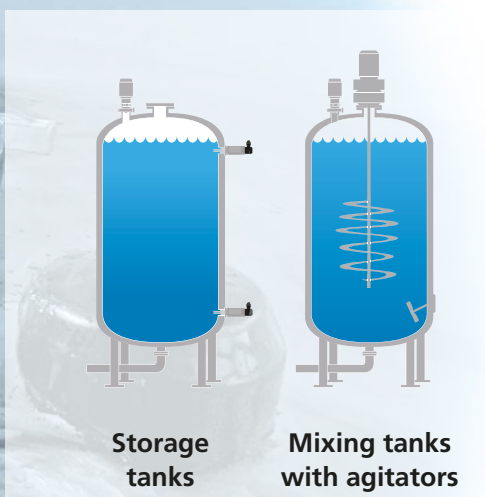
Plastic tanks



Outside use



Flow rate measurement



Storage tanks

Mixing tanks with agitators

CIP process

Process tanks

LW27 hygienic level sensor

Measuring range
0.01...10 m

Medium temperature
-40...150 °C

Pressure-resistant
up to 8 bar.

Easily adjustable
via IO-Link.



Process connection	Order no.
2 switching outputs or 1 switching output and 1 analogue output 4...20 mA	
Aseptoflex Vario G1	LW2720

* LW2760 with radio approval available for India and Malaysia

Find out more
about radar technology:



Guided wave radar. For industrial and hygienic applications.



Versatile:

Modular sensor concept,
flexible in use.

Variable:

Rods can be cut to size as
required.

Reliable:

Measuring principle independent
of temperature influences.

Optional outputs:

Versions with two or four switch-
ing outputs or analogue output
4...20 mA / 0...10 V.

Selectable:

Designs with and without
display.

LR type level sensors

Display and han-
dling on the unit
or via IO-Link.

As an option with
analogue output
or up to four
switching outputs.

Rod lengths
freely selectable
between
10...200 cm.

Versions to the
German Federal
Water Act
available.



Process connection	Order no.
2 switching outputs or 1 switching output and 1 analogue output 4...20 mA	
G 3/4 male	LR2050
3/4" NPT	LR2350
1 switching output and 1 analogue output 4...20 mA or 0...10 V	
G 3/4 male	LR3000
3/4" NPT	LR3300
2 switching outputs	
G 3/4 male	LR7000
3/4" NPT	LR7300
4 switching outputs	
G 3/4 male	LR8000
3/4" NPT	LR8300
4 switching outputs / WHG	
G 3/4 male	LR8010 ¹⁾

¹⁾ Only in connection with rod and coaxial pipe,
see page 18

* LR2059, LR3009, LR7009 und LR8009
available for Japan

LR type level transmitters

For industrial use.

As an option with
analogue output
or up to four
switching outputs.

Protection rating
IP 69K.

Easily adjustable
via IO-Link.

Rod lengths
freely selectable
between
10...200 cm.





Process connection	Order no.
1 switching output and 1 analogue output 4...20 mA or 0...10 V	
G 3/4 male	LR3020
3/4" NPT	LR3320
2 switching outputs	
G 3/4 male	LR7020
3/4" NPT	LR7320
4 switching outputs	
G 3/4 male	LR8020
3/4" NPT	LR8320

LR27 hygienic level sensor

Display and handling on the unit or via IO-Link.

Medium temperature -40...150 °C.

Pressure-resistant up to 40 bar.

Rod lengths of 15...200 cm selectable.



Process connection	Order no.
2 switching outputs or 1 switching output and 1 analogue output 4...20 mA	

Aseptoflex Vario G1

LR2750

* LR2759 available for Japan



For rods and coaxial pipes see pages 18 - 19



For adapters see pages 32 - 33

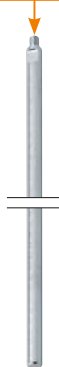
Guided wave radar. Rods and coaxial pipes.

Level sensor
3/4" NPT
Type LR3300
Type LR7300
Type LR8300
Type LR2350
Type LR3320
Type LR7320
Type LR8320



Rods for LR level
sensors with 3/4"
NPT or G 3/4 male,
industrial applica-
tions

Material:
high-grade stain-
less steel
(1.4404 / 316L)



Welding
adapter G 3/4
male
E43379

Level sensor
G 3/4 male
Type LR2050
Type LR3000
Type LR7000
Type LR8000
Type LR8010¹⁾
Type LR3020
Type LR7020
Type LR8020



¹⁾ only in connection
with rod and coaxial pipe



Length [mm]	Order no.
150	E43225
210	E43351
240	E43203
265	E43352
300	E43226
450	E43204
500	E43227

Coaxial pipes for
LR level sensors
with G 3/4 male,
industrial applica-
tions

Material:
stainless steel
(1.4301 / 304)



Process connection	Length [mm]	Order no.
G 3/4	150	E43230
	210	E43354
	240	E43211
	265	E43355
	300	E43228
	450	E43212
	500	E43229
	700	E43213
	800	E43336
	1000	E43214
	1200	E43244
	1200	E43215
	1400	E43216
	1600	E43217
	2000	E43356 ³⁾
G 3/4	450, without holes	E43320
	1000, without holes	E43245
	700, slotted	E43333
	1200, slotted	E43334

³⁾ only for sensor type LR2050, LR3020, LR7020, LR8020



**Hygienic
level sensor
Type LR2750**

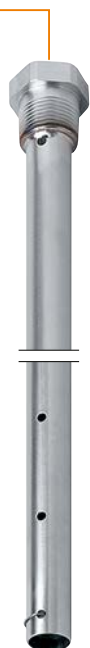


**Rods for level
sensor LR2750,
hygienic**
Material:
high-grade
stainless steel
(1.4404 / 316L)

Length [mm]	Order no.
700	E43205
800	E43337
1000	E43207
1200	E43208
1400	E43209
1600	E43210
2000	E43353 ³⁾

Length [mm]	Order no.
150	E43345
300	E43346
500	E43340
700	E43347
1000	E43341
1500	E43348
2000	E43342

³⁾ only for sensor type LR2050, LR3020, LR7020, LR8020



Process connection	Length [mm]	Order no.
3/4" NPT	240	E43377
	450	E43218
	700	E43219
	1000	E43220
	1200	E43223
	1400	E43224
	1600	E43221
	2000	E43378 ³⁾

³⁾ only for sensor type LR2050, LR3020, LR7020, LR8020

For a wide selection of
other accessories visit
ifm.com



For adapters
see pages
32 - 33

Hydrostatic.
For industrial applications
on tanks and in
free-flowing waterways.

Robust:

Overload-protected measuring principles with a good long-term stability.

Compact:

Pressure transmitters without display and with analogue output.

Precise:

Ceramic-capacitive and piezoresistive measuring cells.



*PA type
pressure sensor
2-wire pressure
transmitter.
Ceramic-capacitive
measuring cell.*



Process connection	Measuring range relative pressure [mbar]	Order no.
Analogue output 4...20 mA		
G 1/4 female	0...1000	PA3027
G 1/4 female	0...250	PA3028
G 1/4 male	0...250	PA3528
G 1/4 male	0...100	PA3589
Analogue output 0...10 V		
G 1/4 female	0...1000	PA9027
G 1/4 female	0...250	PA9028

Order now in the ifm
webshop?
ifm.com



PS type submersible pres- sure transmitters

PUR or FEP cable
for high resistance
to media.

Version with ATEX
approval for group
I, category M1 and
group II, category
1G and 1D.

Pressure compen-
sation via internal-
ly vented cable.



For adapters
see pages
32 - 33

Measuring range relative pressure [mbar]	Cable [m]	Order no.
For standard applications, CE approval		
0...1000	PUR, 30	PS3617
0...1000	PUR, 15	PS3417
0...600	PUR, 30	PS3607
0...600	PUR, 15	PS3427
0...600	PUR, 10	PS3407
0...250	PUR, 5	PS3208
For high resistance to media, CE approval		
0...1000	FEP, 30	PS4607
0...1000	FEP, 15	PS4417
0...600	FEP, 20	PS4506
0...600	FEP, 10	PS4407
0...250	FEP, 10	PS4408
0...250	FEP, 5	PS4208
For hazardous areas, CE, Ex, GL approvals		
0...1000	FEP, 15	PS317A
0...600	FEP, 10	PS307A
0...250	FEP, 5	PS308A

Hydrostatic. For industrial applications on tanks.



Robust:

Overload-protected measuring principles with a good long-term stability.

Quick setting:

Easy to use to VDMA standard via 3 pushbuttons (PN type).

Unambiguous:

Large pointer display with LED ring (type PG).

Precise:

Ceramic-capacitive and piezoresistive measuring cells.

PN type pressure sensor
Programmable
2-colour display,
clearly visible
switch-point LEDs.
Rotatable process
connection.
3 pushbutton
operation with
raised buttons.
IO-Link.
PE type pressure sensor
EPDM seal.



Process connection	Factory setting Measuring range Relative pressure [mbar]	Order no.	Factory setting Measuring range Relative pressure [mbar]	Order no.
2 switching outputs			1 switching output and 1 analogue output 4...20 mA / 0...10 V	
G 1/4 female	0...1000	PN7097	0...1000	PN3097
G 1/4 male	0...1000	PN7597	0...1000	PN3597
2 switching outputs or 1 switching output and 1 analogue output 4...20 mA / 0...10 V, scalable				
G 1/4 female	0...1000	PN2097	0...250	PN2098
G 1/4 male	0...1000	PN2597	0...250	PN2598
G 1/4 female	-500...500	PN2169		
G 1/4 male	-500...500	PN2569		
2 switching outputs or 1 switching output and 1 analogue output 4...20 mA / 0...10 V, scalable				
G 1/4 female	-1000...1000	PE2099		
G 1/4 male	-1000...1000	PE2599		



**PG type
pressure sensor**
Optimum
legibility due
to the electronic
pointer display.
Rotatable display.
Display of the
trend or of the
minimum and
maximum values.



Process connection	Factory setting Measuring range Relative pressure [mbar]	Order no.
1 switching output and 1 analogue output 4...20 mA / 20...4 mA, scalable		
G 1/2 male	0...1000	PG2457
G 1/2 male	0...250	PG2458
G 1/2 male	0...100	PG2489



*For adapters
see pages
32 - 33*

Hydrostatic. For hygienic applications on large tanks.



Hygienic:

Ingress resistance, materials and approvals comply with hygienic requirements.

Robust:

Overload-resistant ceramic-capacitive measuring cells with long-term stability.

Versatile:

Variable process connections.

Precise:

High overall accuracy (0.2%).

Suitable for CIP/SIP:

High temperature resistance and electronic temperature compensation.

Well documented:

Free factory certificate for download.

PG type pressure sensor

Optimum legibility due to the electronic pointer display.

Rotatable display.

Display of the trend or of the minimum and maximum values.



PM type pressure transmitter

Programmable analogue output

Accuracy 0.2 %.

IO-Link.

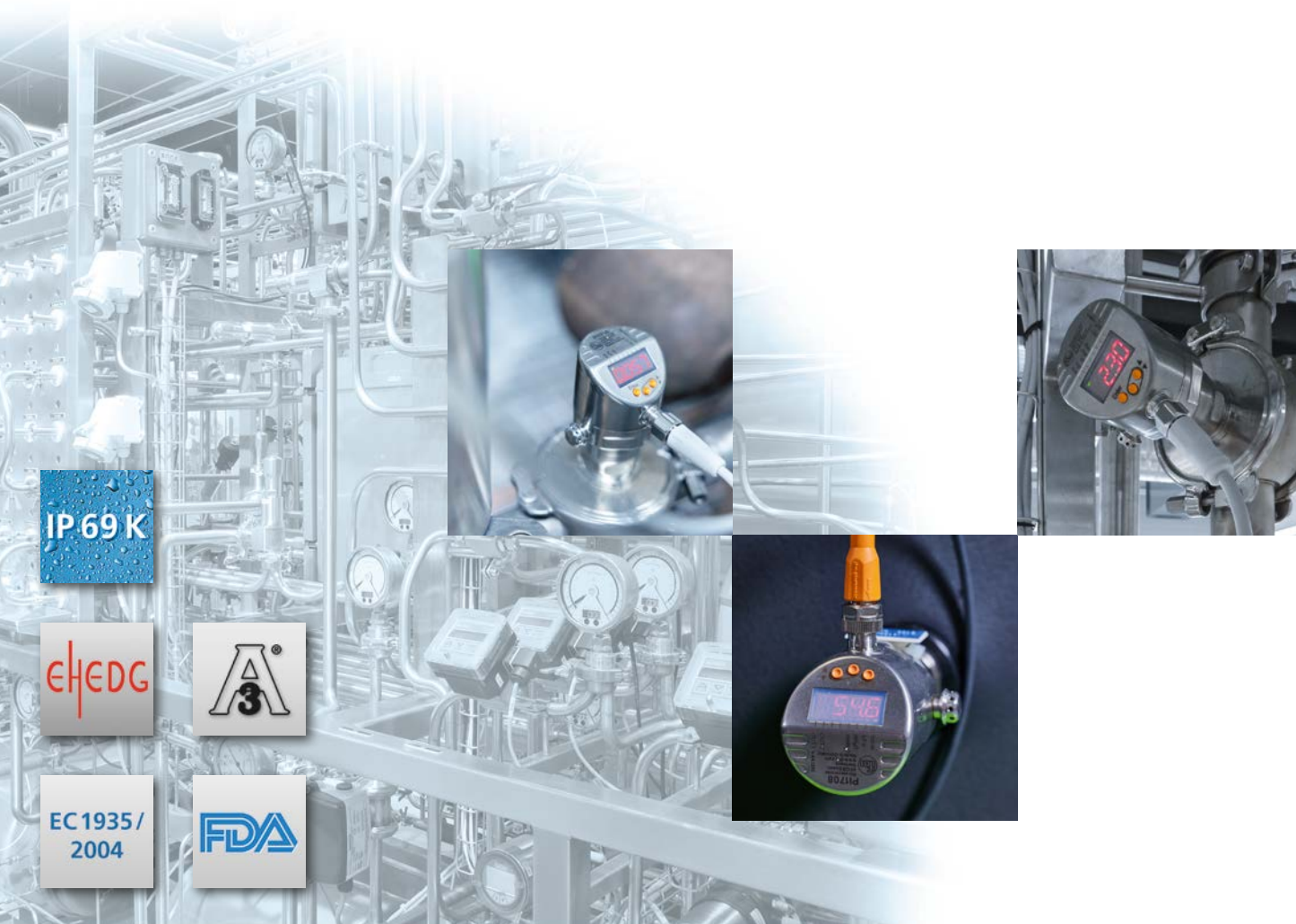


Factory setting Measuring range Relative pressure [mbar]	Process connection	
	Aseptoflex Vario G1 male Order no.	Sealing cone G1 male Order no.

1 switching output and 1 analogue output 4...20 mA / 20...4 mA, scalable

0...100	PG2789	PG2889
0...250	PG2798	PG2898
0...1000	PG2797	PG2897
-1000...1000	PG2799	PG2899

Factory setting Measuring range Relative pressure [mbar]	Process connection		
	Aseptoflex Vario G1 male Order no.	Sealing cone G1 male Order no.	Clamp DN25...40 Order no.
Analogausgang 4...20 mA, skalierbar			
0...100	PM1789	PM1689	-
0...250	PM1708	PM1608	PM1108
0...400	PM1718	PM1618	PM1118
-1000...1000	PM1709	PM1609	PM1109
0...1000	PM1707	PM1607	PM1107
0...1600	PM1717	PM1617	PM1117



IP 69 K

eHEDG

A³

EC 1935 / 2004

FDA

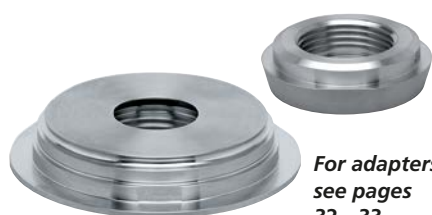
PI type pressure sensor

Programmable analogue output in 2-wire operation.

Additional switching output in 3/4-wire operation. IO-Link.



Factory setting Measuring range Relative pressure [mbar]	Process connection	
	Aseptoflex Vario G1 male Order no.	Sealing cone G1 male Order no.
1 switching output and 1 analogue output 4...20 mA / 20...4 mA		
0...100	PI1789	PI1889
0...250	PI1708	PI1808
0...400	PI1718	PI1818
-1000...1000	PI1709	PI1809
0...1000	PI1707	PI1807
0...1600	PI1717	PI1817



For adapters
see pages
32 - 33

Find out more
about the PI:



Ultrasonic. For long distances and difficult surfaces.



Precise:

Precise and continuous level measurement, e.g. of bulk materials.

Robust:

High-grade stainless steel housing for demanding applications.

Simple:

Setting via teach button, wire teach or IO-Link.

Flexible:

Normally closed / normally open programmable.

Variety:

Versions with two switching outputs or switching and analogue outputs 4...20 mA / 0...10 V.

Flexible:

Adjustable sound beam.

Certified:

ECOLAB

UGT Cube type
ultrasonic sensors



UGT type

UIT5xx
type

UIT3xx
type

Design	Output ¹⁾	Order no.	Order no.	Order no.
Max. range [mm]		40...300	60...800	80...1200
M18 Cube	PNP, IO-Link	UGT592	UGT593	UGT594
M18 short	PNP, IO-Link	UGT524	UGT525	UGT526
M18 short	2 x PNP, IO-Link	UGT528	UGT527	UGT529
Max. range [mm]		150...1600	200...2200	
M18 long	2 x PNP, IO-Link	UGT509	UGT512	
M18 long	PNP, 4...20 mA, IO-Link	UGT510	UGT513	
M18 long	PNP, 0...10 V, IO-Link	UGT511	UGT514	
Max. range [mm]		250...3500	350...6000	600...8000
M30	2 x PNP, IO-Link	UIT500	UIT503	UIT506
M30	PNP, 4...20 mA, IO-Link	UIT501	UIT504	UIT507
M30	PNP, 0...10 V, IO-Link	UIT502	UIT505	UIT508
Max. range [mm]		250...2500		
M30	2 x PNP, IO-Link	UIT300		
M30	PNP, 4...20 mA, IO-Link	UIT301		
M30	PNP, 0...10 V, IO-Link	UIT302		

¹⁾ for versions without IO-Link or for digital/analogue mixed unit versions see ifm.com

IP 69 K

ECOLAB
certified

IO-Link

IP 67

Ultrasonic sensors also detect shiny and irregular surfaces of any colour.

8 m

6 m

3,5 m

2,5 m

2,2 m

1,2 m

1,2 m

Ultrasonic sensor accessories



Versions in plastic at
ifm.com

Description	Order no.
Schallrohr zum Verschmälern der Schallkeule M18	E23000
Sound deflector for installation in small spaces or in dusty environments for ranges up to 1.2 m	E23001
Sound deflector for installation in small spaces or in dusty environments for ranges up to 2.2 m	E23002
Sound deflector M18	E23006
Sound tube to narrow the sound beam M30	E23007
Sound deflector M30	E23008

Photoelectric. For long distances: angle- independent measurement with focussed light spot.

Longest distance:

Photoelectric level detection of bulk materials and non-transparent liquids. Long ranges up to 9.8 m for large tanks and vessels.

User-friendly:

Scalable detection range with window function.

Reliable detection:

Can be used in applications requiring background suppression. Angle independent detection for easiest adjustment.

Flexible mounting.

Extensive range of fixing components.

Independent:

Shape, colour or structure of the surface to be detected do not matter.



Photoelectric distance sensor with time-of-flight measurement, type O1D

Resistant to extraneous light up to 100,000 lux.

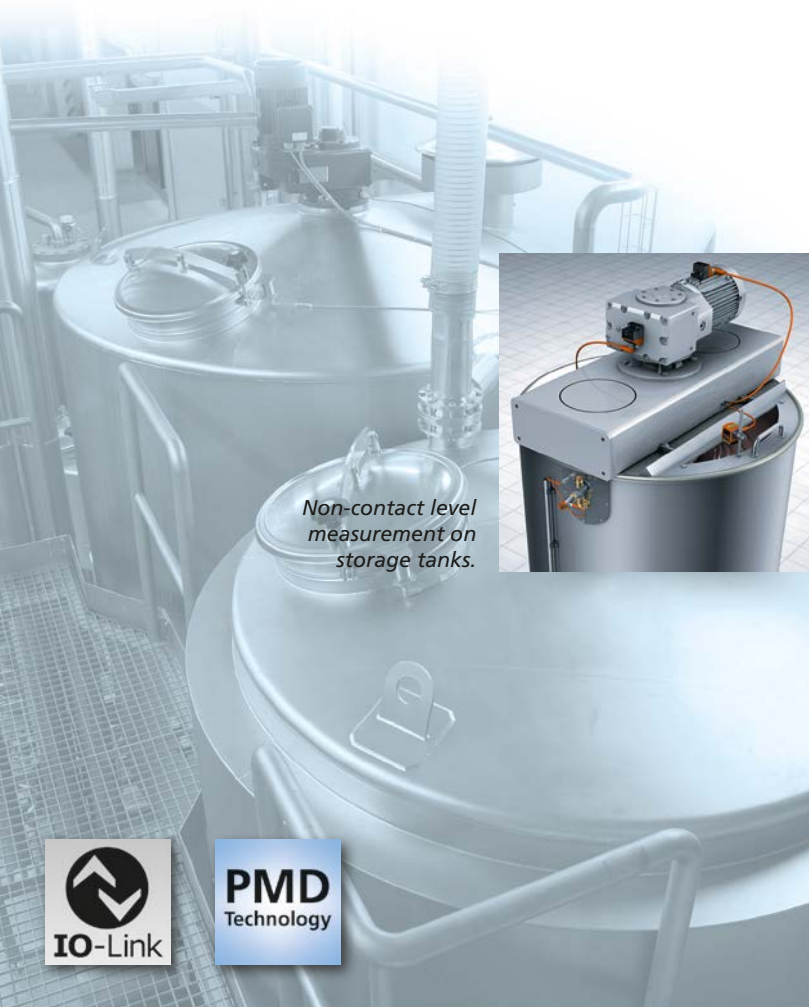
2 switching outputs, one output can be configured as analogue output.

4-digit alphanumeric display.



Measurement range [m]	Connection	Light spot diameter [mm]	Order no.
2 switching outputs or 1 switching output and 1 analogue output 4...20 mA / 0...10 V, scalable			
0.2...9.8	M12 connector	< 15 x 15	O1D300

Order now in the ifm
webshop?
ifm.com



Non-contact level measurement on storage tanks.



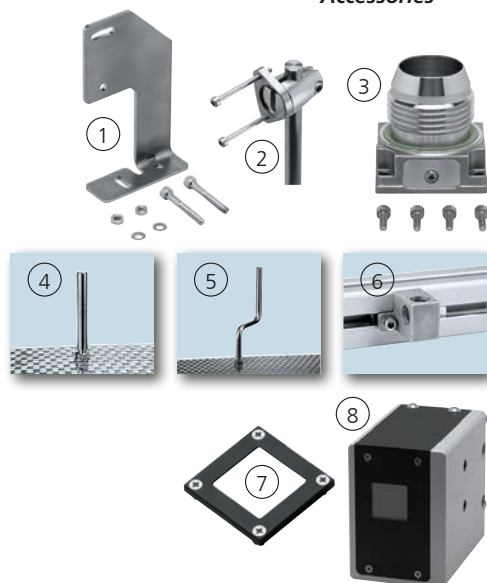
Level detection measurement in sugar cane delivery.



Level detection on a hopper.



Accessories



no.	Description	Order no.
Mounting accessories		
①	Mounting bracket high-grade stainless steel (1.4404 / 316 L)	E21120
②	Clamp mounting set for rod mount Ø 12 mm	E2D101
③	Mounting adapter with process connection G1 male	E21224
④	Mounting rod, 100 mm, Ø 12 mm, M10 thread, stainless steel	E20938
⑤	Mounting rod, 200 mm, Ø 12 mm, M10 thread, stainless steel	E20940
⑥	Cube for mounting on an aluminium profile, M10 thread, stainless steel	E20951
Device protection		
⑦	Protective cover, glass	E21171
	Protective cover, PMMA	E21133
⑧	Cooling box	E21248

Photoelectric 3D. For bulk materials and completeness monitoring.



Award winning:

The first industrial 3D sensor that detects objects and scenes in three dimensions at a glance. The sensor operates on the time of flight principle.

Independent:

Illumination, time of flight measurement and evaluation in an industrially compatible housing.

Far-sighted:

Non-contact detection of opaque media for levels of up to 10 m, resistant to extraneous light and irrespective of the colour.

Flexible:

The measuring segment can be adapted to the shape of the respective tank.

Informative:

Feedback via LED display.

Everything under control:

Even in case of conical heaps and funnelling.

O3D type photo-electric 3D sensors with time of flight measurement

Switching outputs and analogue outputs for the simple integration into the control environment.

Continuous measurement of uneven surfaces.

Determines min, max or mean values.

Teaching of different tank shapes.

Interfering structures are suppressed.

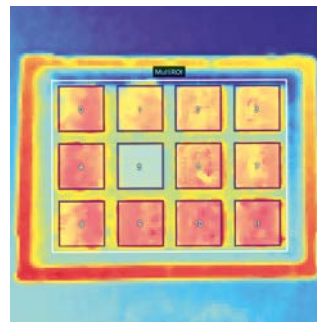


Housing material	Angle of aperture [°]	Max. field of view size [m]		Order no.
2 digital inputs, 3 digital outputs, 1 analogue output				
aluminium	40 x 30	2.61 x 3.47	IP 65, IP 67	O3D300
aluminium	60 x 45	3.75 x 5.00	IP 65, IP 67	O3D302
aluminium	70 x 51	4.70 x 5.00	IP 65, IP 67	O3D304
stainless steel	40 x 30	2.61 x 3.47	IP 65, IP 67, IP 69K	O3D310
stainless steel	60 x 45	3.75 x 5.00	IP 65, IP 67, IP 69K	O3D312
stainless steel	70 x 51	4.70 x 5.00	IP 65, IP 67, IP 69K	O3D314

3D sensor accessories

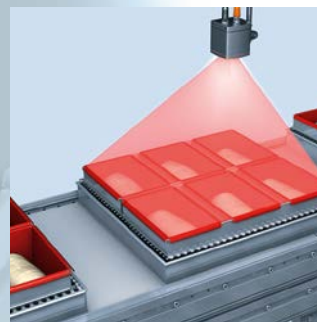


Description	Order no.
Connection cable straight, M12 / RJ45, 2 m MPPE halogen-free	EVF551
Connection cable angled, M12, 3 m PVC	E12456
Mounting set for 3D sensors, stainless steel	E3D301



The patented multi ROI allows for having several measuring segments incorporated into one result and, in addition, for providing the individual measured values as well.

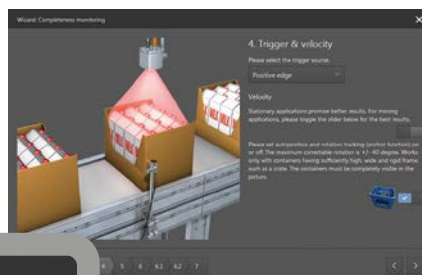
Full crate check – Automatic position and orientation adjustment guarantees a stable function even with a variable object position.



Continuous level measurement of non-transparent solids and bulk materials in tanks, silos, hoppers or in heaps. Data output is provided either in m or m^3 .



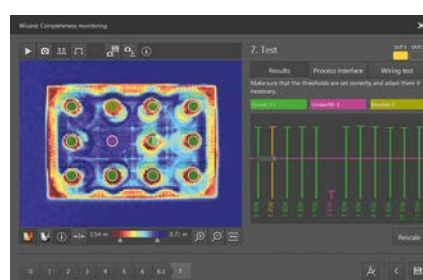
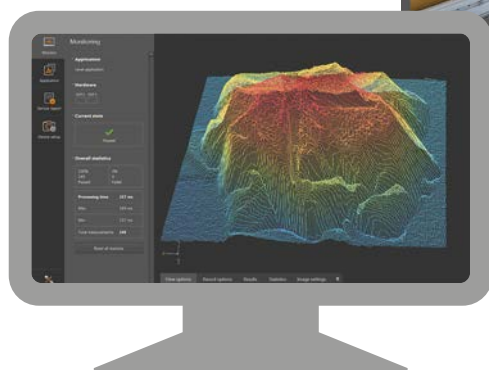
Level monitoring



User-friendly.

Continuous exchange with users and extensive handling tests have led to an extremely simple

usability and ease of integration of the sensor - from ordering to replacement.



Completeness control

Accessories.

Adapters for level sensors in industrial and hygienic applications.

Adapter G 1/2 for LMT type



no.	Process connection	Order no.	Order no. with leakage port
Mounting adapters for industrial and hygienic applications			
①	Clamp 1 - 1.5"	E33401	E43311
	Clamp 2"	E33402	E43312
②	Hygienic pipe fitting, DN25	E43304	-
	Hygienic pipe fitting DN40	E43305	-
③	Varivent type F DN25, D = 50	E43306	-
	Varivent type N DN40...150, D = 68	E43307	-
④	Screw-in adapter G 3/4	E43302	-
	Adapters G 1	E43303	-
④	Adapter 3/4" NPT	E43313	-
⑤	Pipe fitting DN25 SMS	E33430	-
	Pipe fitting DN50 SMS	-	E33444
	Sealing plug G 1/2	E43308	-
⑥	Adapter M30 x 1.5	E43325	-
⑦	Adapter DN50 SMS	E43344	-
⑧	Adapter Aseptoflex Vario	E43358	-
Welding adapters for industrial and hygienic applications			
⑨	Collar G 1/2 Ø 45 mm	E30056	E43315
⑩	Ball G 1/2 Ø 35 mm	E30055	-
⑪	For tanks G 1/2 Ø 30 mm	E43300	E43309
⑪	For pipes G 1/2 Ø 29 mm	E43301	E43310
⑫	Long version G 1/2 Ø 50 mm	E43319	-
⑬	Welding mandrel G 1/2	E43314	-
T-pieces for industrial and hygienic applications			
	T-piece DN25	E43316	-
⑭	T-piece DN40	E43317	-
	T-piece DN50	E43318	-
Variable clamp adapters			
⑮	Clamp adapter for type LMT104 1)	E43349	-
	Clamp adapter for type LMT105 1)	E43322	-

1) only in connection with G 1/2 I adapter

Adapter G 1/2 for LMC type



no.	Description	Order no.
Welding adapter		
②⑨	G 1/2 for type LMC	E43375
	G 3/4 for type LR	E43379
③⑦	Welding mandrel for type LMC4x0	E43382

You are looking for the
suitable connector?
ifm.com

Adapters for G1
male / Aseptoflex
Vario PG, PI, LR,
PM



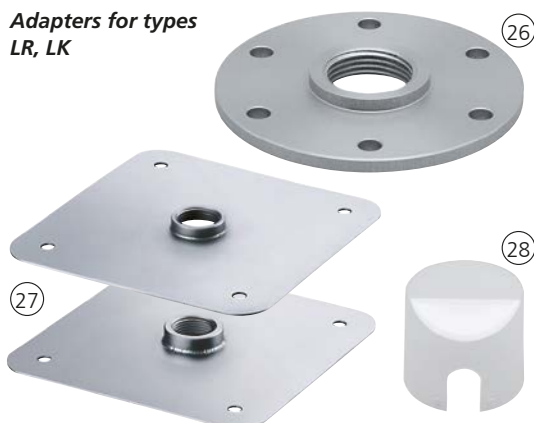
no.	Process connection	Order no.	Order no. with leakage port
Mounting adapters for industrial and hygienic applications			
16	Clamp 1 - 1.5"	E33201	E33208
	Clamp 2"	E33202	E33209
17	Hygienic pipe fitting DN32	E33211	-
	Hygienic pipe fitting DN40	E33212	-
	Hygienic pipe fitting DN50	E33213	-
	Universal process adapter Rd52	E33340	-
18	Pipe fitting DIN 11864-1 A-B5	-	E33304
	Varivent type F DN25, D = 50	E33221	E33228
	Varivent type N DN40...150, D = 68	E33222	E33229
19	Flange DRD, D = 65	E33242	-
Welding adapters for industrial and hygienic applications			
20	Welding adapter Ø 85 mm	-	E30528
21	Welding adapter Ø 85 mm	-	E30529

Adapters for types
LI, LK, LT



no.	Description	Order no.
Mounting adapter		
22	Mounting clamp Ø 16 mm	E43000
23	Welding adapter Ø 50 mm	E43002
24	Mounting adapter, G 3/4,	E43003
	Mounting adapter G 1	E43004
	Mounting adapter, 3/4" NPT,	E43012
Protective brackets		
25	Climatic tube, 132 mm long	E43103
	Climatic tube, 264 mm long	E43100
	Climatic tube, 472 mm long	E43101
	Climatic tube, 728 mm long	E43102

Adapters for types
LR, LK



no.	Description	Order no.
Mounting adapter		
26	Flange plate 73 - 90 / G 3/4	E43201
	Flange plate 65 - 80 / G 3/4	E43202
27	Launching plate G 3/4 for type LR for installation in plastic tanks	E43380
	Launching plate 3/4" NPT for type LR for installation in plastic tanks	E43381
Protective brackets		
28	Protective cover	E43910

Who says we can only do hardware?

moneo. The all-you-want software for industrial evolution.

One thing is clear: proper industrial digitisation begins with the sensor and extends into the IT structure. If you are already using IO-Link in your plant, you have taken the first important step towards more efficiency and less unplanned downtime. And you are ready for the second step. You are ready to get even more out of your plant with the help of simple and ingenious software.

Turning values into added value

With moneo, you can easily access the entire IO-Link network. And, thanks to the logical tree structure, you will have quick and efficient access to each individual sensor at any time. As soon as your IO-Link network is integrated into moneo, values will no longer be just separate pieces of information. moneo makes values useful and transforms them into added value. You can, for example, combine the level values of all tanks into one overall stock figure. This overall stock figure can then be clearly displayed along with other relevant information in the cockpit. This gives you a continuous overview of all the important values in your plant or process.

If things become critical in your absence, for example because the level is running low or the vibration on a fan rotor is dangerously increasing, moneo will immediately alert and inform you by e-mail. This allows you to schedule maintenance in good time or initiate manual refill processes to keep things moving. In short: moneo will optimise your processes and ensure that they will be trouble-free.

A new kind of flexibility thanks to moneo

As you have seen, moneo leaves nothing to be desired. It is a great piece of software to begin with, but its actual extent will always depend on your specific requirements. You can, for example, simply begin with parameter setting and the cockpit function for one part of your plant and explore the possibilities of real-time maintenance later, when you are ready for the next step.

To put it in a nutshell: moneo offers the flexibility to simply grow with your requirements. The days of unmanageable, oversized and confusing software are over. It is time for simplicity, user-friendliness and ingenuity. It is time for moneo!

We love it when a plan comes together.



moneo|RTM: level monitoring in tanks with 2-component casting resin.

In order to protect the electronics of the sensors from shock, vibration and moisture, potting processes are an essential part of sensor production. For a smooth production process, but also for a constantly high product quality, the permanent availability of casting resin and casting hardener in the storage tank containers is essential. The level monitoring application implemented at ifm prover gmbh thus contributes to a reliable logistics organisation of temperature-critical media in the production process.



moneo|RTM: Optimisation of the level monitoring in a calibration plant.

Flow sensors are calibrated in the calibration plant at ifm prover gmbh. To ensure maximum measuring accuracy, both hot and cold water is sent through the sensors. The measured values are used for calibration.





ifm article no. 78004125 -We reserve the right to make technical changes without prior notice. · ifm electronic gmbh, Friedrichstr. 1, 45128 Essen · 01/24

ifm.com

